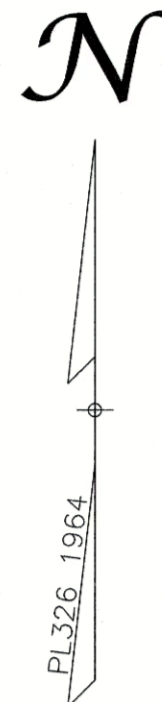


**LEGEND OF ABBREVIATIONS & SYMBOLS**

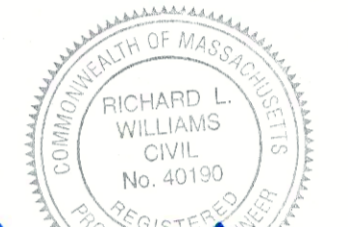
EXISTING 2-FOOT CONTOUR	92
EXISTING 10-FOOT CONTOUR	90
EXISTING SPOT ELEVATION	x 90.39
EDGE OF DISTURBED	~~~~~
CHAIN LINK FENCE 5'H	—x—x—x—
STOCKADE FENCE SILT SOCK	—o—o—o—
EDGE WETLAND (BW)	—x—x—x—
WETLAND FLAG	A1O
25' FROM WETLANDS	—x—x—x—
35' NO BUILD ZONE	—x—x—x—
100' WETLAND	—x—x—x—
SILTATION CONTROL	—o—o—o—
FINISHED FLOOR	F.F.
OVERHEAD WIRE	—OW—OW—
ELECTRIC METER	⊕
WATER GATE	⊕
WATER SHUT-OFF	⊕
DRAIN MAN HOLE	⊕
CATCH BASIN	⊕
UTILITY POLE	⊕
TREE (CONIFEROUS)	⊕

**ZONING DISTRICT: S-15**  
 MINIMUM LOT AREA = 15,000 S.F.  
 MINIMUM LOT FRONTAGE = 100 FEET  
 FRONT YARD SETBACK = 20 FEET  
 SIDE YARD SETBACK = 15 FEET  
 REAR YARD SETBACK = 20 FEET  
 MAXIMUM LOT COVERAGE = 25%  
 MAXIMUM BUILDING HEIGHT = 35 FEET  
 MINIMUM LOT WIDTH: 60 FEET

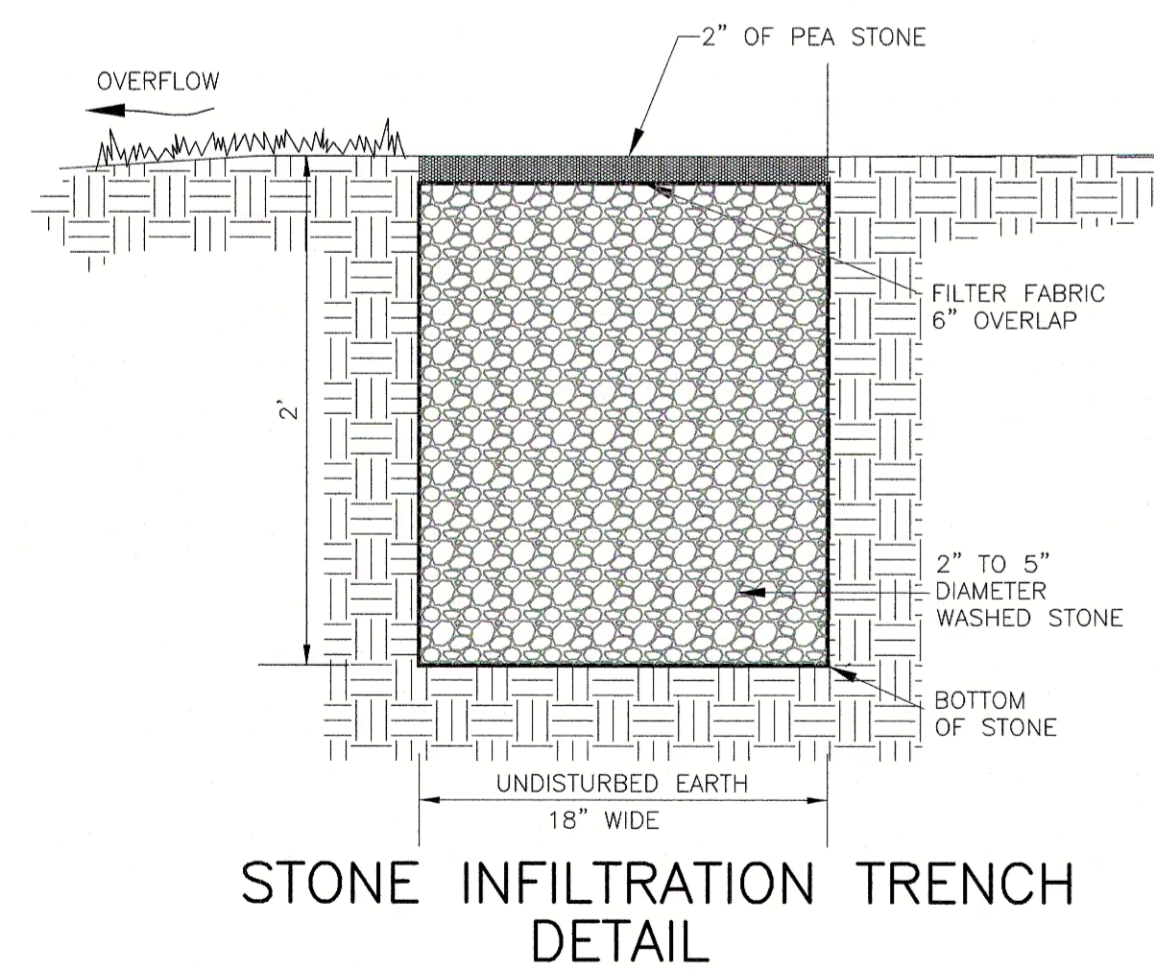
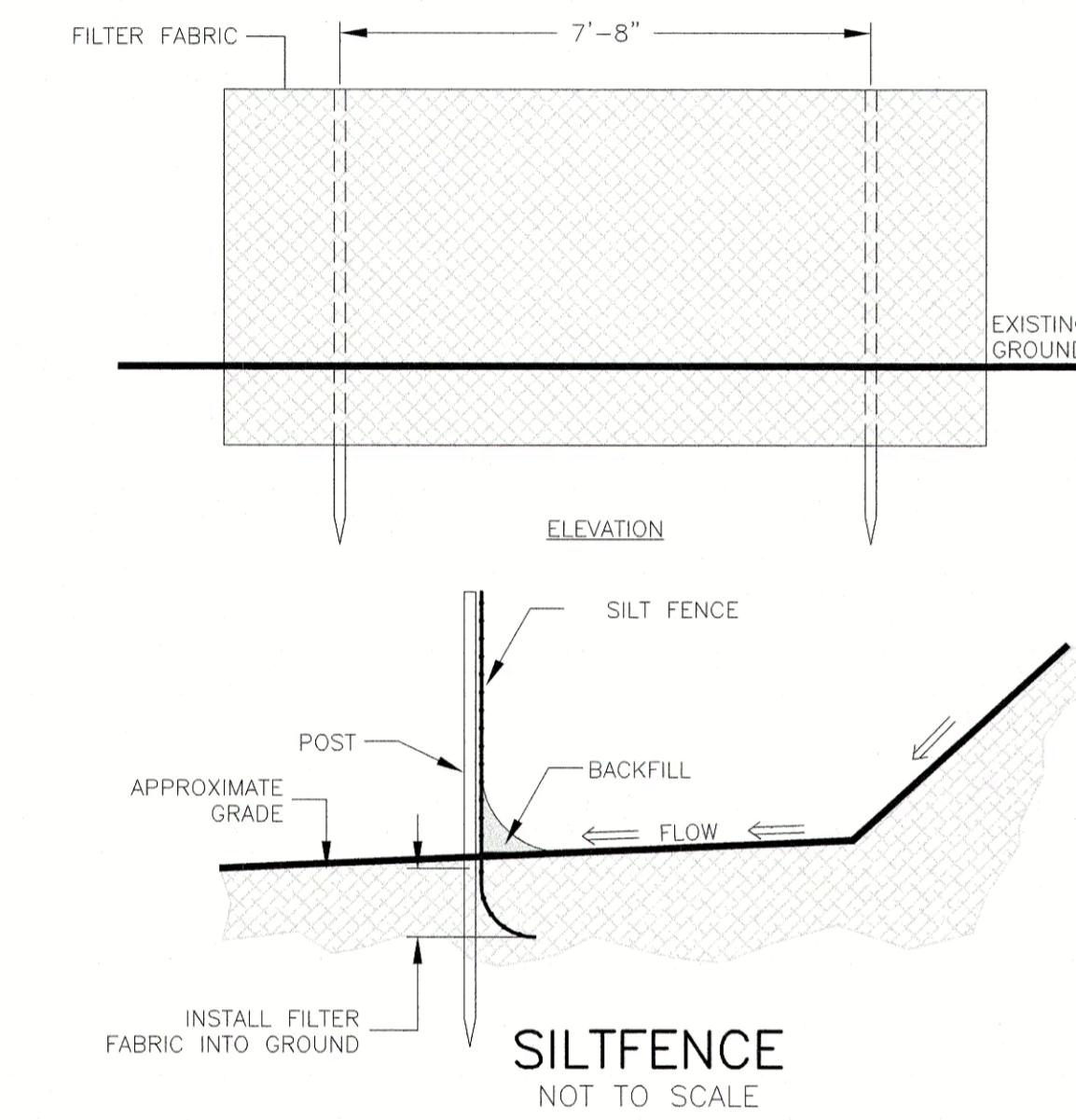


**PLAN TO ACCOMPANY A  
 NOTICE OF INTENT  
 544 SUMMER AVENUE  
 READING, MA**

SCALE: 1" = 10' DATE: FEBRUARY 13, 2023



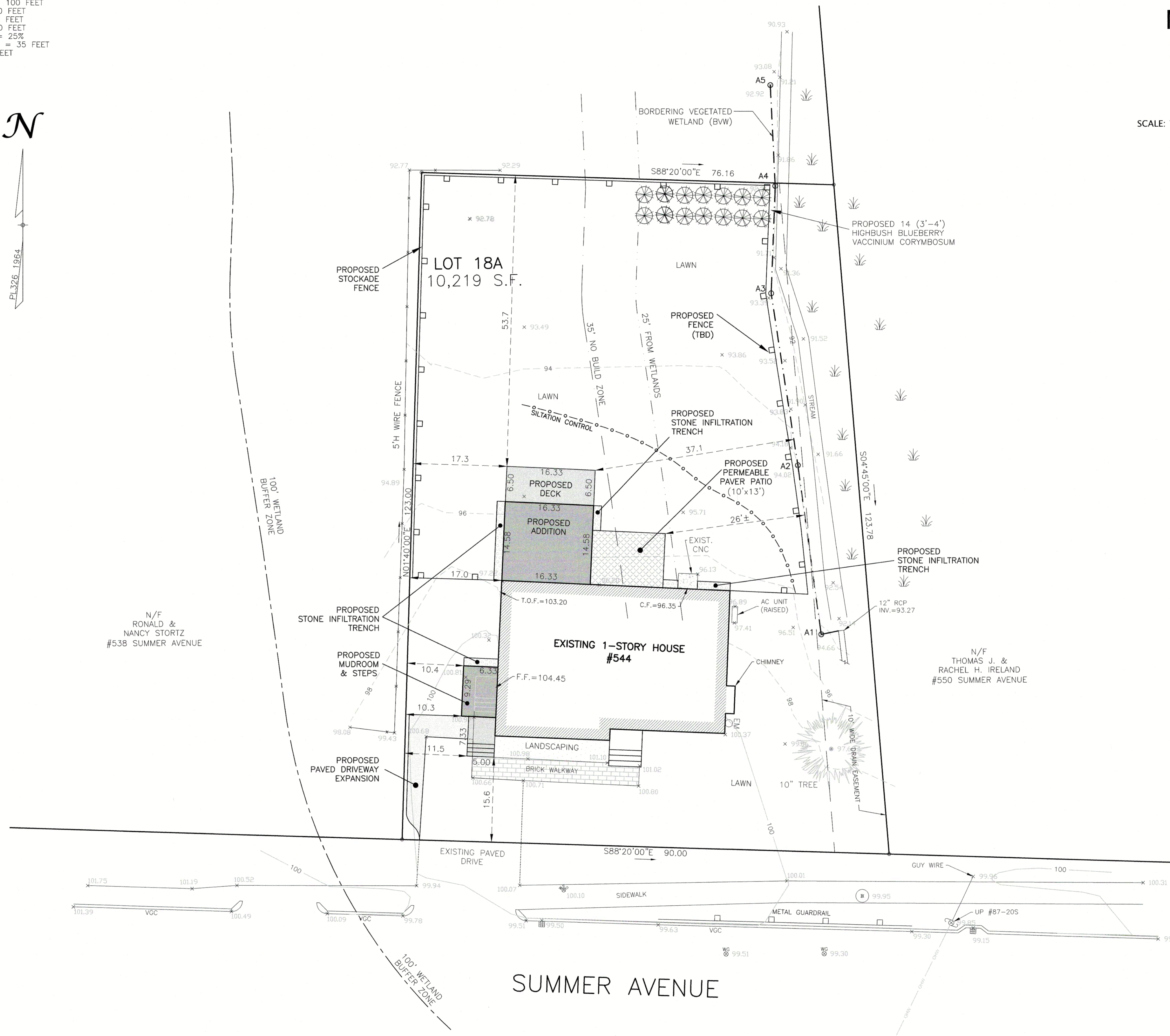
*Richard L. Williams*  
 2/13/2023



**STONE INFILTRATION TRENCH DETAIL**  
 (NOT TO SCALE)

NOTE: SEE PLAN VIEW FOR PROPOSED LOCATION.

- NOTES:**
- ALL ELEVATIONS SHOWN ARE REFERENCED TO AN ASSUMED DATUM.
  - EXISTING TOPOGRAPHY SHOWN IS THE RESULT OF AN ACTUAL INSTRUMENT SURVEY CONDUCTED BY WILLIAMS & SPARAGES LLC ON JANUARY 25, 2023.
  - WETLAND RESOURCE AREA DELINEATED BY WILLIAMS & SPARAGES LLC ON DECEMBER 21, 2022.



SUMMER AVENUE

P:\READ-0061\544 Summer Street\Drawings\MO\Summer544.dwg, GH