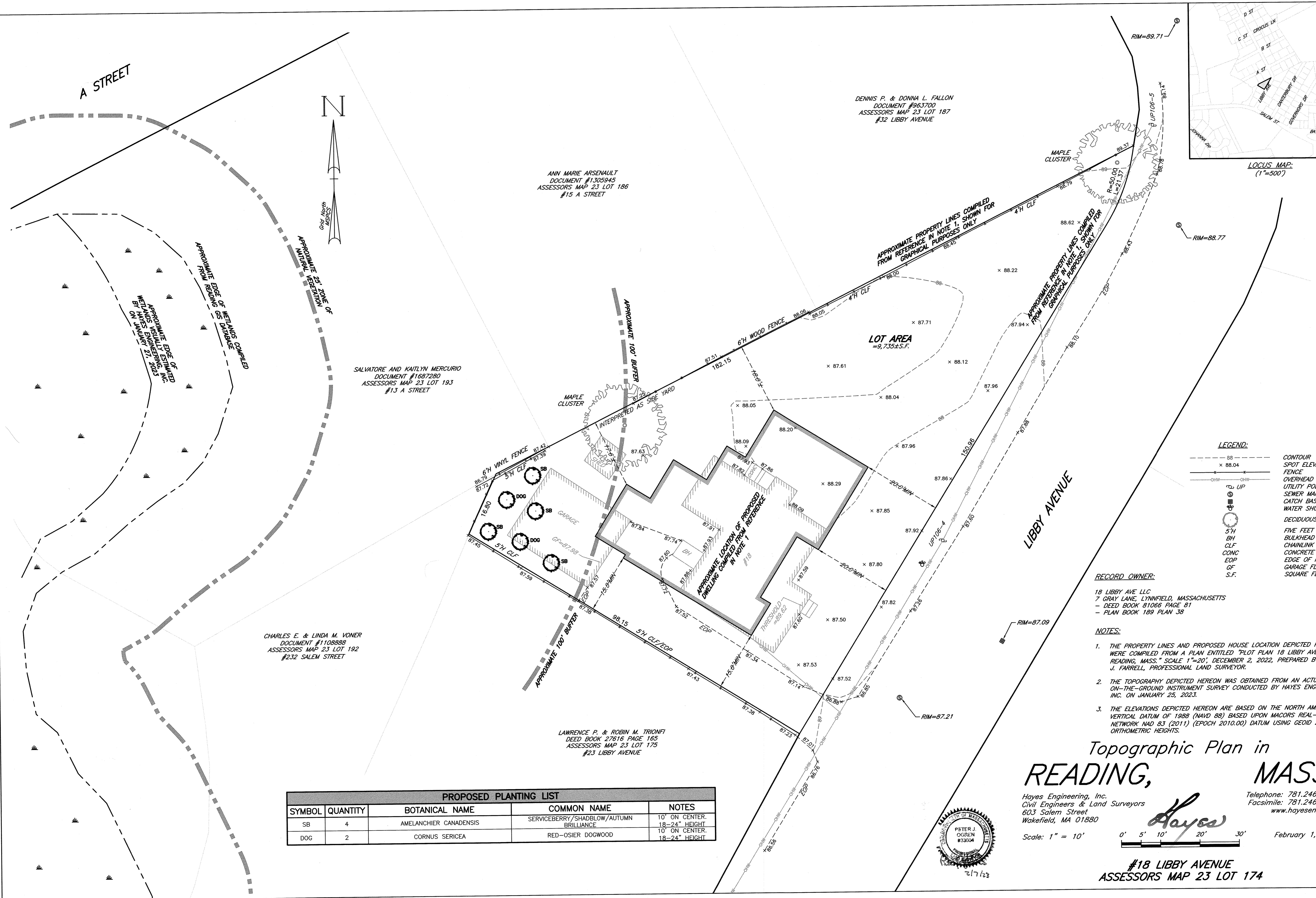


LOCUS MAP:  
(1"=500')



ANN MARIE ARSENAULT  
DOCUMENT #1305945  
ASSESSORS MAP 23 LOT 186  
#15 A STREET

SALVATORE AND KAITLYN MERCURIO  
DOCUMENT #1687280  
ASSESSORS MAP 23 LOT 193  
#13 A STREET

CHARLES E. & LINDA M. VONER  
DOCUMENT #1108888  
ASSESSORS MAP 23 LOT 192  
#232 SALEM STREET

LAWRENCE P. & ROBIN M. TRIONFI  
DEED BOOK 27616 PAGE 165  
ASSESSORS MAP 23 LOT 175  
#23 LIBBY AVENUE

DENNIS P. & DONNA L. FALLON  
DOCUMENT #963700  
ASSESSORS MAP 23 LOT 187  
#32 LIBBY AVENUE

**RECORD OWNER:**

18 LIBBY AVE LLC  
7 GRAY LANE, LYNNFIELD, MASSACHUSETTS  
- DEED BOOK 81066 PAGE 81  
- PLAN BOOK 189 PLAN 38

**NOTES:**

1. THE PROPERTY LINES AND PROPOSED HOUSE LOCATION DEPICTED HEREON WERE COMPILED FROM A PLAN ENTITLED "PLOT PLAN 18 LIBBY AVENUE, READING, MASS." SCALE 1"=20', DECEMBER 2, 2022, PREPARED BY EDWARDS J. FARRELL, PROFESSIONAL LAND SURVEYOR.
2. THE TOPOGRAPHY DEPICTED HEREON WAS OBTAINED FROM AN ACTUAL ON-THE-GROUND INSTRUMENT SURVEY CONDUCTED BY HAYES ENGINEERING, INC. ON JANUARY 25, 2023.
3. THE ELEVATIONS DEPICTED HEREON ARE BASED ON THE NORTH AMERICAN VERTICAL DATUM OF 1988 (NAVD 88) BASED UPON MACORS REAL-TIME NETWORK MAD 83 (2011) (EPOCH 2010.00) DATUM USING GEOID 2018 FOR ORTHOMETRIC HEIGHTS.

**LEGEND:**

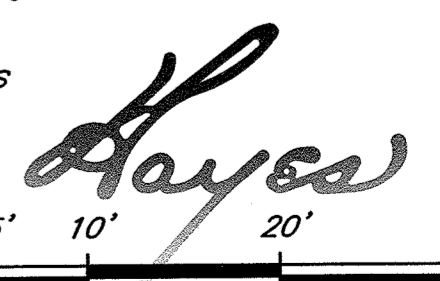
--- 88 ---	CONTOUR
x 88.04	SPOT ELEVATION
---	FENCE
---	OVERHEAD WIRE
UP	UTILITY POLE
○	SEWER MANHOLE
○	CATCH BASIN
○	WATER SHUTOFF
○	DECIDUOUS TREE
○	FIVE FEET HIGH
○	BULKHEAD
○	CHAINLINK FENCE
○	CONCRETE
○	EOP
○	EDGE OF PAVEMENT
○	GARAGE FLOOR
○	S.F.
○	SQUARE FEET

**PROPOSED PLANTING LIST**

SYMBOL	QUANTITY	BOTANICAL NAME	COMMON NAME	NOTES
SB	4	AMELANCHIER CANADENSIS	SERVICEBERRY / SHADBLOW / AUTUMN BRILLIANCE	10' ON CENTER, 18-24" HEIGHT
DOG	2	CORNUS SERICEA	RED-OSIER DOGWOOD	10' ON CENTER, 18-24" HEIGHT

Topographic Plan in  
**READING, MASS.**

Hayes Engineering, Inc.  
Civil Engineers & Land Surveyors  
603 Salem Street  
Wakefield, MA 01880



Telephone: 781.246.2800  
Facsimile: 781.246.7596  
www.hayeseng.com

Scale: 1" = 10'



February 1, 2023

**#18 LIBBY AVENUE**  
**ASSESSORS MAP 23 LOT 17A**

