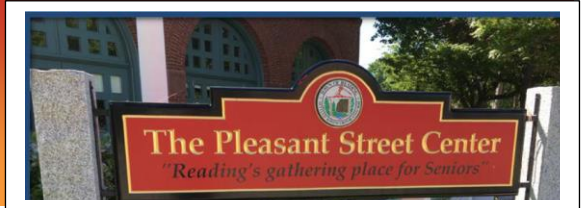


# ReCalc Update

Newsletter #1 – April 20, 2022



*The charge of ReCalc is to explore the current and future needs of the Community, and initiate planning for a potential new Senior/Community Center in town that will focus on residents aged 60+ and possibly other members of the community.*

## Why ReCalc

- Outdated and limited accessibility with current Senior Center
- Growing overall population with 27% residents are 60+ years
- Facility not adequate to meet the needs of community
- A Dedicated Staff having difficulty meeting the demand of community
- Some residents leave town for Services

## ReCalc Activities

- Select Board establishes Committee made of seven members from the Community
- Committee meets twice monthly since December 2021
- Community Services signed a contract with UMASS for consultant services
- Collaboration with Council on Aging

## History

June 2017: Aging in Reading, Massachusetts: A community needs assessment

Recommendations Made in Six Key Areas (two tied to facility issues with current Senior Center)

- Communication, Partnerships, Property Tax, Programming:
- **Explore the feasibility of significant expansion of Space for the Pleasant Street Center and Elder and Human Services Division (included staffing)**
- **Improve Accessibility of Pleasant St. Center**



## ReCalc Approach

### Benchmarking Communities

- Prepared extensive survey to be used on field visits to various Senior and Community centers in Massachusetts
- Selected visits to over 21 peer communities in the next four weeks
- Data to be collected will include facility space specifications, programs/activities offered, and limitations, if any, from adequacy of space

### Next Steps

### Community Input

Community wide outreach via

- Surveys
- Focus Groups
- Public Forums
  
- Collect and analyze community input
- Return to community with recommendation on Senior vs. Multigenerational Center
- Recommendation to Select Board and then Town Meeting for funding of feasibility study including potential locations, plans and costs.

A blue speech bubble graphic with the text "Take Our Survey" in white. The bubble is layered over other colored shapes (green, purple, pink).

For up-to-date information, visit the ReCalc Website:

<https://www.readingma.gov/675/ReCalc---Reading-Center-for-Active-Livin>