

NOTES:

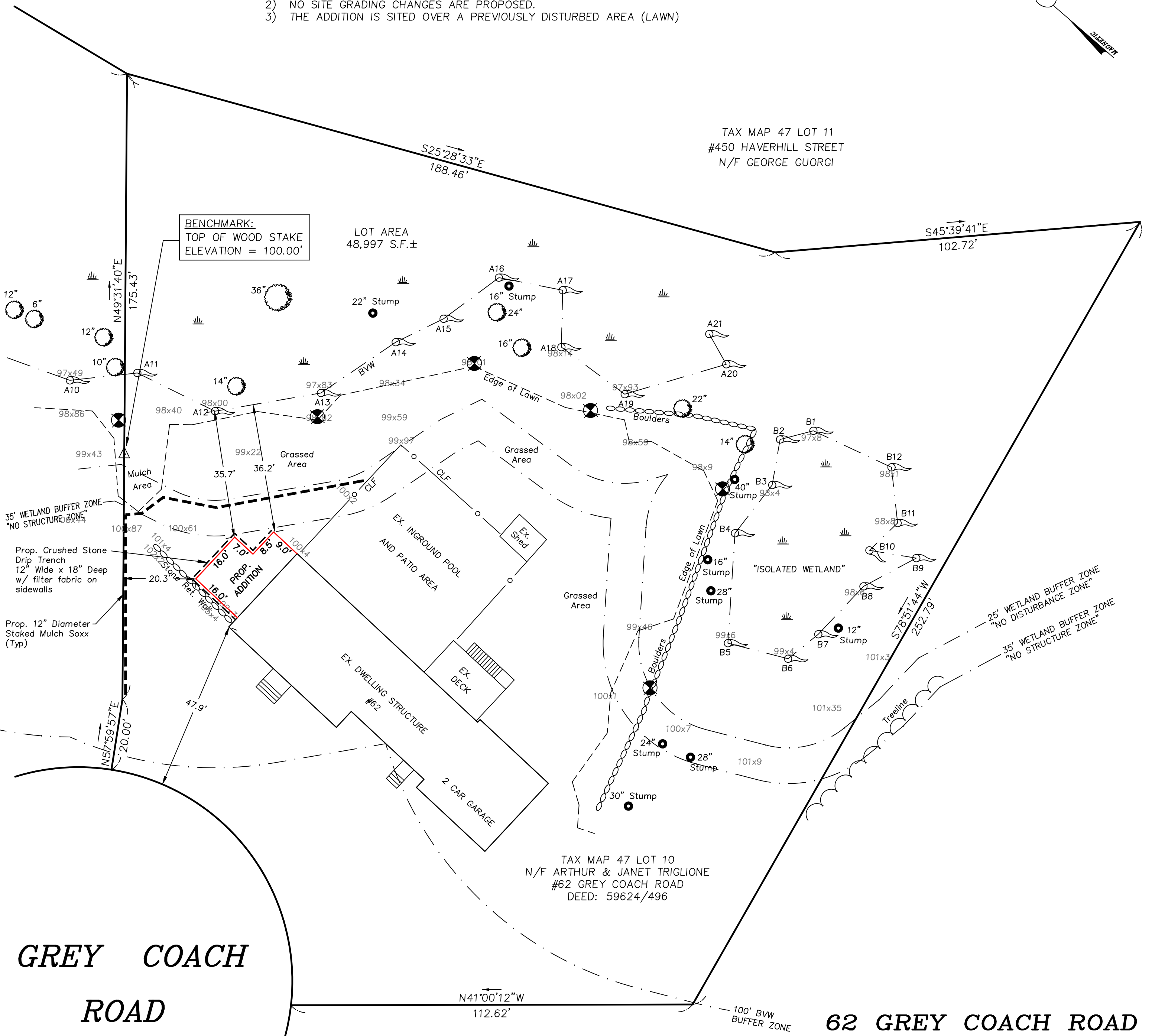
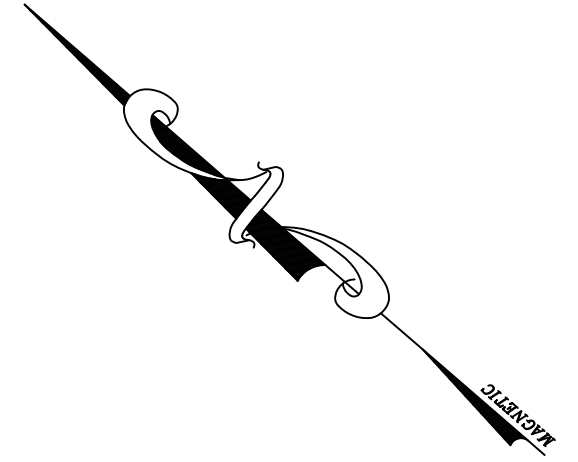
1. THE TOPOGRAPHY, SITE DETAIL & SURFACE IMPROVEMENTS DEPICTED HEREON WERE OBTAINED FROM A PARTIAL FIELD SURVEY CONDUCTED ON SEPT. 4, 2020 BY SULLIVAN ENGINEERING GROUP, LLC.
2. THE LOCUS PROPERTY DEPICTED IS LOCATED IN ZONING DISTRICT S-20.
3. THE ELEVATIONS DEPICTED HEREON WERE BASED UPON AN ASSUMED DATUM.

LEGEND:

- BVW = BORDERING VEGETATED WETLAND
- = WETLAND RESOURCE AREA
- A17 = WETLAND FLAG
- 99x59 = SPOT GRADE
- 24" = TREE/DIAMETER
- = CONSERVATION MARKER SET ON BOULDER

SITE CONSTRUCTION NOTES:

- 1) NO TREES TO BE CUT OR REMOVED AS PART OF THIS PROJECT
- 2) NO SITE GRADING CHANGES ARE PROPOSED.
- 3) THE ADDITION IS SITED OVER A PREVIOUSLY DISTURBED AREA (LAWN)



GREY COACH ROAD

62 GREY COACH ROAD

TAX MAP 40 LOT 205
#61 GREY COACH ROAD
N/F BRAMANTE SALVATORE

TAX MAP 47 LOT 10
N/F ARTHUR & JANET TRIGLIONE
#62 GREY COACH ROAD
DEED: 59624/496

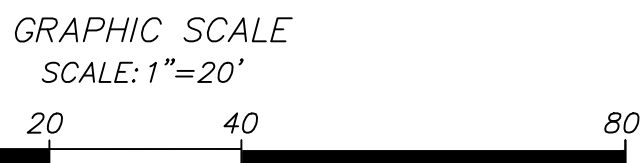


PLOT PLAN OF LAND
LOCATED IN
READING, MASSACHUSETTS
(MIDDLESEX COUNTY)

PREPARED FOR
ARTHUR + JANET TRIGLIONE

SCALE: 1" = 20' DATE: FEB. 23, 2021

PREPARED BY
SULLIVAN ENGINEERING GROUP, LLC
P.O. BOX 2004
WOBURN, MA 01888
(781) 854-8644



REVISIONS

NO.	DATE	DESCRIPTION	BY	CHK'D