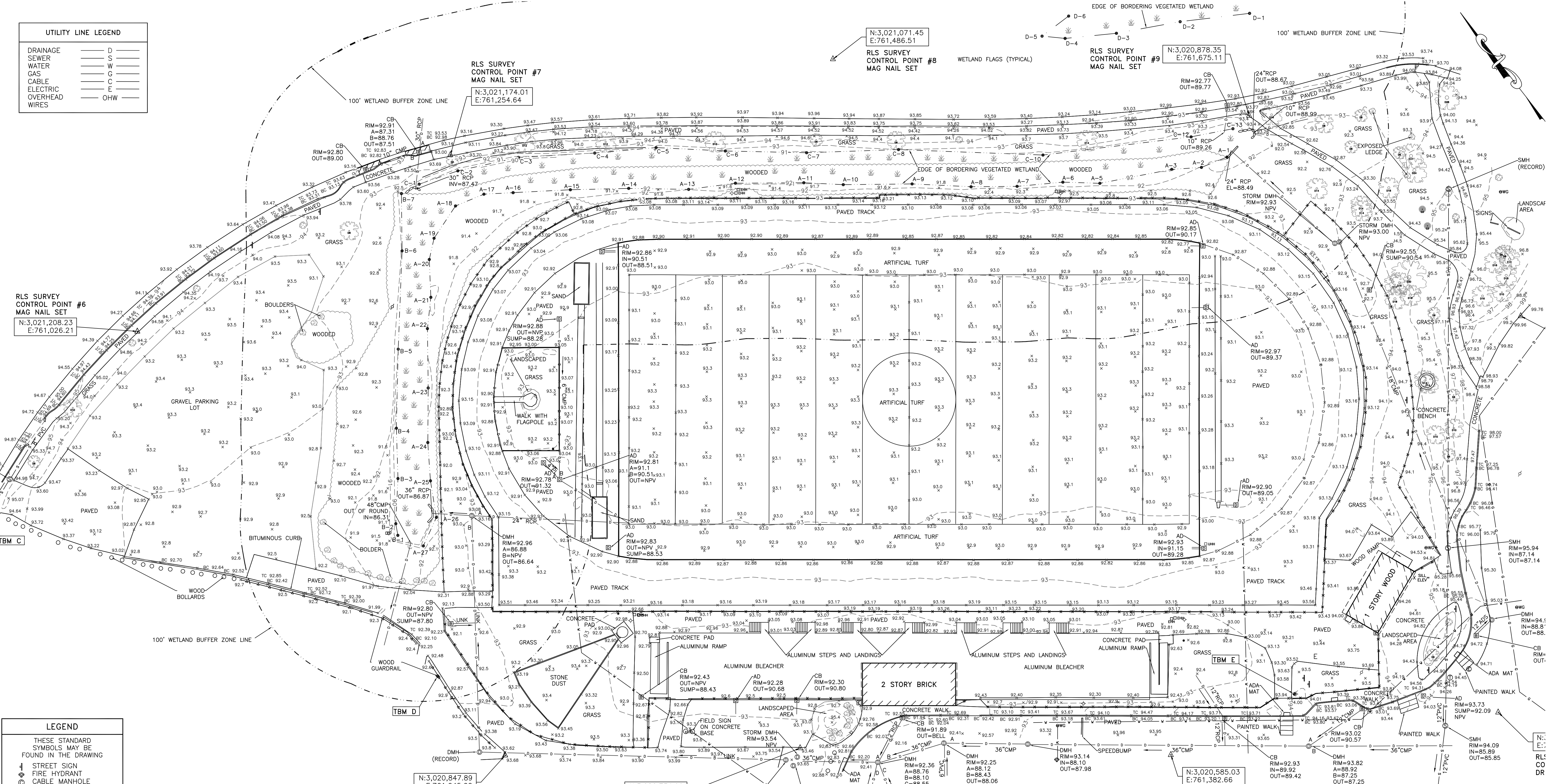


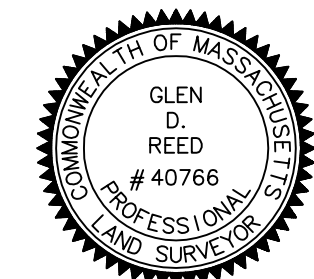
UTILITY LINE LEGEND	
DRAINAGE	D
SEWER	S
WATER	W
GAS	G
CABLE	C
ELECTRIC	E
OVERHEAD WIRES	OHW



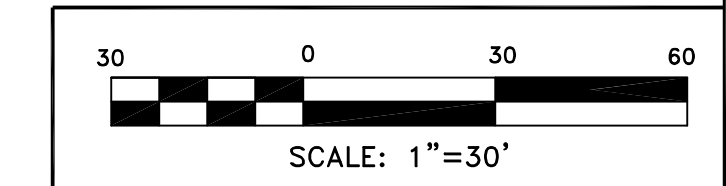
LEGEND	
THESE STANDARD SYMBOLS MAY BE FOUND IN THE DRAWING	
STREET SIGN	⊠
FIRE HYDRANT	⊙
CABLE MANHOLE	⊕
DRAIN MANHOLE	⊖
ELECTRIC MANHOLE	⊗
SEWER MANHOLE	⊘
TELEPHONE MANHOLE	⊙
WATER MANHOLE	⊚
UNKNOWN MANHOLE	⊛
CATCH BASIN	⊜
ELECTRIC BOX/MTR	⊝
CABLE BOX	⊞
TELEPHONE BOX	⊟
GAS METER	⊠
MONITORING WELL	⊡
GAS GATE	⊢
WATER GATE	⊣
ELECTRIC HAND HOLE	⊤
UTILITY POLE	⊥
LIGHT POLE	⊦
GUY WIRE	⊧
YARD LIGHT	⊨
BOUND	⊩
BOUND W/ DRILL HOLE	⊪
POST/BOLLARD	⊫
ROOF DRAIN	⊬
BUSH/SHRUB	⊭
PARKING SPACES	⊮

**NOTES:**

1. THE VERTICAL DATUM OF THIS SURVEY IS THE NORTH AMERICAN VERTICAL DATUM OF 1988 (N.A.V.D. 88). THE ELEVATIONS WERE DERIVED FROM GPS MEASUREMENTS REFERENCED TO THE MASSACHUSETTS CONTINUOUSLY OPERATING REFERENCE STATION NETWORK (MACORS).
2. THE COORDINATES SHOWN HEREON AND BASIS OF THE BEARINGS ARE REFERENCED TO THE MASSACHUSETTS STATE PLANE COORDINATE SYSTEM (MAINLAND - NORTH AMERICAN DATUM OF 1983). THE COORDINATES WERE DERIVED FROM GPS MEASUREMENTS REFERENCED TO THE MASSACHUSETTS CONTINUOUSLY OPERATING REFERENCE STATION NETWORK (MACORS).
3. THE AREA SURVEYED IS LOCATED IN FLOOD ZONE X (AREAS DETERMINED TO BE OUTSIDE THE 0.2% ANNUAL CHANCE FLOODPLAIN AS INDICATED ON THE F.E.M.A. FLOOD INSURANCE RATE MAP FOR MIDDLESEX COUNTY, MASSACHUSETTS, PANEL 311 OF 656 (COMMUNITY NUMBER 250211) WITH AN EFFECTIVE DATE OF JUNE 4, 2010.
4. THE FIELD SURVEY FOR THIS PROJECT WAS COMPLETED ON SEPTEMBER 8, 2021.
5. THE UTILITY LOCATIONS AND SIZES AS SHOWN HEREON ARE BASED ON SURFACE EVIDENCE AND ARE APPROXIMATE. DIG SAFE SHOULD BE CALLED PRIOR TO ANY EXCAVATIONS.

  
**Glen D. Reed**  
 GLEN D. REED, P.L.S. LICENSE NO. 40766  
 AS AGENT FOR REED LAND SURVEYING, INC.  
 NOT INDIVIDUALLY

VERTICAL CONTROL FOR SITE - TEMPORARY BENCHMARKS (TBM)	
TBM "A": CROSS CUT ON ARROW BOLT ON HYDRANT	ELEVATION = 95.74 (N.A.V.D. 88)
TBM "B": BOLT IN SIGN	ELEVATION = 98.16 (N.A.V.D. 88)
TBM "C": NAIL IN TREE	ELEVATION = 97.10 (N.A.V.D. 88)
TBM "D": SPIKE IN GUARD RAIL	ELEVATION = 93.62 (N.A.V.D. 88)
TBM "E": CHISELED SQUARE IN LIGHT POLE BASE	ELEVATION = 94.44 (N.A.V.D. 88)



Reed

Land Surveying, Inc.

109 RHODE ISLAND ROAD, SUITE 4A  
 LAKEVILLE, MASSACHUSETTS 02347  
 (508) 923-1181 FAX: (508) 923-1191

© 2021 REED LAND SURVEYING, INC.

SHEET 1 OF 2

**TOPOGRAPHIC SURVEY**  
 READING MEMORIAL  
 HIGH SCHOOL  
 READING, MASS.  
 (MIDDLESEX COUNTY)  
 PREPARED FOR  
 ACTIVITAS INC.

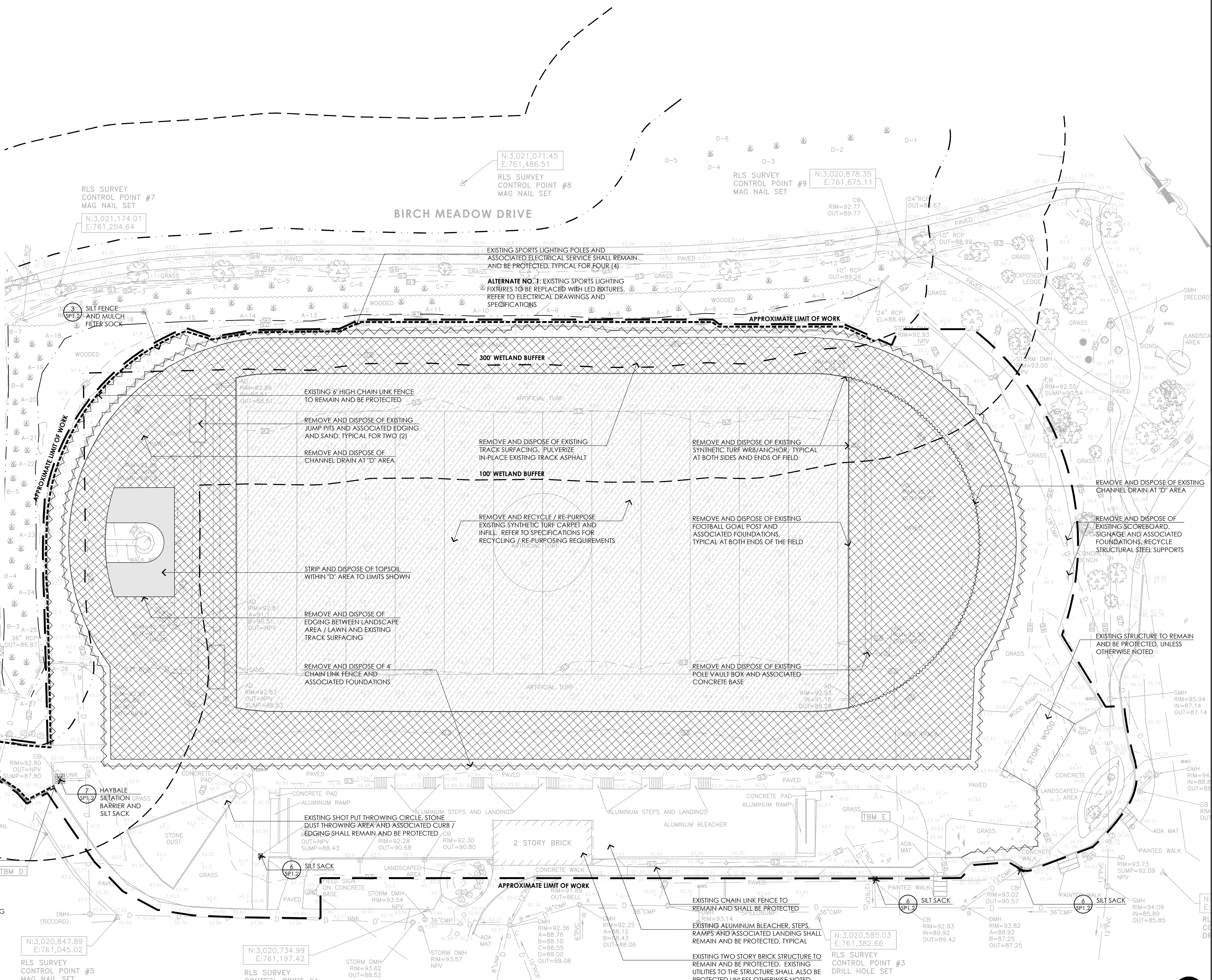
FILE: 21025 TOPO      SEPTEMBER 1, 2021

### SITE PREPARATION AND EROSION CONTROL LEGEND

- APPROXIMATE LIMIT OF WORK
- APPROXIMATE WETLAND
- 30' WETLAND BUFFER
- 100' WETLAND BUFFER
- TEMPORARY CONSTRUCTION FENCE
- SILT FENCE AND MULCH FILTER SOCK
- REMOVE AND DISPOSE OF CHAIN LINK FENCE, GATES, AND ASSOCIATED FOUNDATIONS
- REMOVE AND DISPOSE OF UTILITY LINES
- REMOVE AND DISPOSE OF EXISTING TURF
- TRACK SURFACE REMOVAL AND PAVEMENT PULVERIZATION
- STRIP AND DISPOSE TOPSOIL
- HAYBAE SILTATION BARRIER, AND SILT SACK
- SILT SACK

### SITE PREPARATION AND EROSION CONTROL NOTES

1. EXISTING CONDITIONS INFORMATION IS REPRODUCED FROM THE SURVEY PREPARED BY REED LAND SURVEYING INC., LOCATED AT 109 RHODE ISLAND ROAD, SUITE 4A, LAKEVILLE, MA, AND DATED SEPTEMBER 1, 2021.
2. THE CONTRACTOR SHALL VERIFY ALL EXISTING CONDITIONS IN THE FIELD AND REPORT ANY DISCREPANCIES BETWEEN PLANS, SPECIFICATIONS, AND ACTUAL CONDITIONS TO THE LANDSCAPE ARCHITECT/CIVIL ENGINEER FOR CLARIFICATION AND RESOLUTION PRIOR TO STARTING WORK.
3. THE CONTRACTOR IS RESPONSIBLE FOR ANY DAMAGE TO EXISTING CONDITIONS TO REMAIN THAT ARE DUE TO CONTRACTOR OPERATIONS.
4. ALL ITEMS TO BE REMOVED THAT ARE NOT STOCKPILED FOR LATER REUSE ON THE PROJECT OR FOR DELIVERY TO THE OWNER SHALL BE LEGALLY DISPOSED OF OFF SITE BY THE CONTRACTOR.
5. THE LOCATIONS OF UNDERGROUND UTILITIES SHOWN ON THIS PLAN ARE BASED ON THE SURVEY REFERENCED. THE CONTRACTOR SHALL CONTACT DISCO AND THE PROPER LOCAL AUTHORITIES OR RESPECTIVE UTILITY COMPANIES TO CONFIRM THE LOCATION OF ALL EXISTING UTILITIES BEFORE COMMENCING WORK. ANY DAMAGE DUE TO FAILURE OF THE CONTRACTOR TO CONTACT THE PROPER AUTHORITIES SHALL BE BORNE BY THE CONTRACTOR.
6. THE CONTRACTOR SHALL BE RESPONSIBLE FOR COORDINATING HIS EFFORTS OF THE DEMOLITION WITH ALL TRADES.
7. THE CONTRACTOR SHALL COORDINATE ALL ADJUSTMENTS OR ABANDONMENT OF UTILITIES WITH THE RESPECTIVE UTILITY COMPANY.
8. THE CONTRACTOR SHALL MAINTAIN OR ADJUST TO NEW FINISH GRADE (AS NECESSARY) ALL UTILITY AND SITE STRUCTURES SUCH AS MANHOLES, CATCH BASINS, ETC. FROM MAINTAINED UTILITY AND SITE SYSTEMS UNLESS OTHERWISE NOTED OR DIRECTED BY THE LANDSCAPE ARCHITECT.
9. THE CONTRACTOR SHALL INSTALL CONSTRUCTION FENCING PER THE PLANS AND SPECIFICATIONS. CONTRACTOR MUST TAKE APPROPRIATE MEASURES TO MAINTAIN A SECURE SITE THROUGHOUT THE PROJECT.
10. CONTRACTOR SHALL INSTALL ALL EROSION CONTROL MEASURES AROUND THE OUTSIDE PERIMETER (LIMIT OF WORK) PRIOR TO COMMENCING DEMOLITION AND EARTHWORK OPERATIONS.
11. CONTRACTOR SHALL CONFIRM BENCHMARKS AND NORTHINGS AND EASTINGS IN FIELD PRIOR TO DEMOLITION.
12. EXISTING DRAINAGE SYSTEM BASINS SHALL REMAIN OPERATIONAL AS LONG AS POSSIBLE. UPON REMOVAL OF EXISTING BASINS, CONTRACTOR SHALL PROVIDE TEMPORARY INFILTRATION AREAS TO INFILTRATE CONSTRUCTION RUNOFF. CONTRACTOR SHALL FOCUS ON GETTING PROPOSED DRAINAGE SYSTEMS OPERATIONAL AS SOON AS POSSIBLE. CONTRACTOR SHALL ENSURE ALL STORMWATER FLOWING TO NEW BASINS IS TREATED STORMWATER THAT WILL NOT NEGATIVELY AFFECT THE FINAL SYSTEMS.



**CONSULTANTS**

CIVIL ENGINEER -  
PVI SITE DESIGN

ELECTRICAL ENGINEER -  
NV5

WETLAND DELINEATION-  
ECR

SURVEY -  
REED LAND SURVEYING

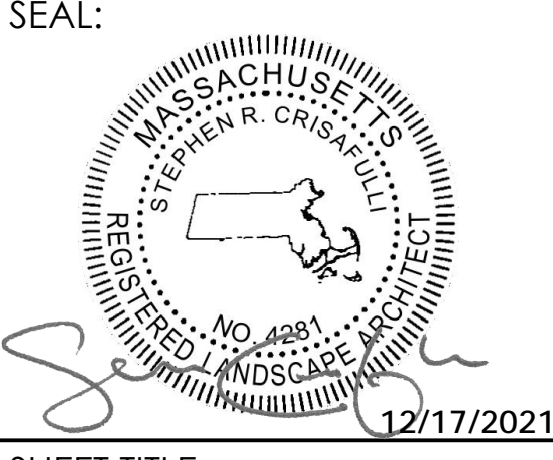
**TOWN OF READING**  
 Reading, Massachusetts  
**HIGH SCHOOL TRACK AND FIELD RENOVATIONS**

Conservation | RDA  
 January 12, 2022

**REVISIONS:**

NO.	DATE	DESCRIPTION

SCALE: 1"=30'-0"  
 PROJECT NO.: 21029.00  
 FILE: 21029.00-SP1.1-SP\_PLAN.dwg  
 DRAWN: MJD  
 CHECKED: SRC



SHEET TITLE:  
**SITE PREPARATION AND EROSION CONTROL PLAN**

SHEET NO:  
**SP1.1**







# High School Track & Field Renovations

Town of Reading | Reading, Massachusetts

**ACTIVITAS**  
 landscape architecture | civil engineering  
 70 Milton Street | Dedham, MA 02026-2915  
 (781) 326-2600 | activitas.com

JANUARY 12, 2022