

HIGHWAY GUARD DETAILS

TRAFFIC SIGNAL CONDUIT

WATER SUPPLY ALTERATIONS

DRAINAGE DETAILS

NONE

NONE

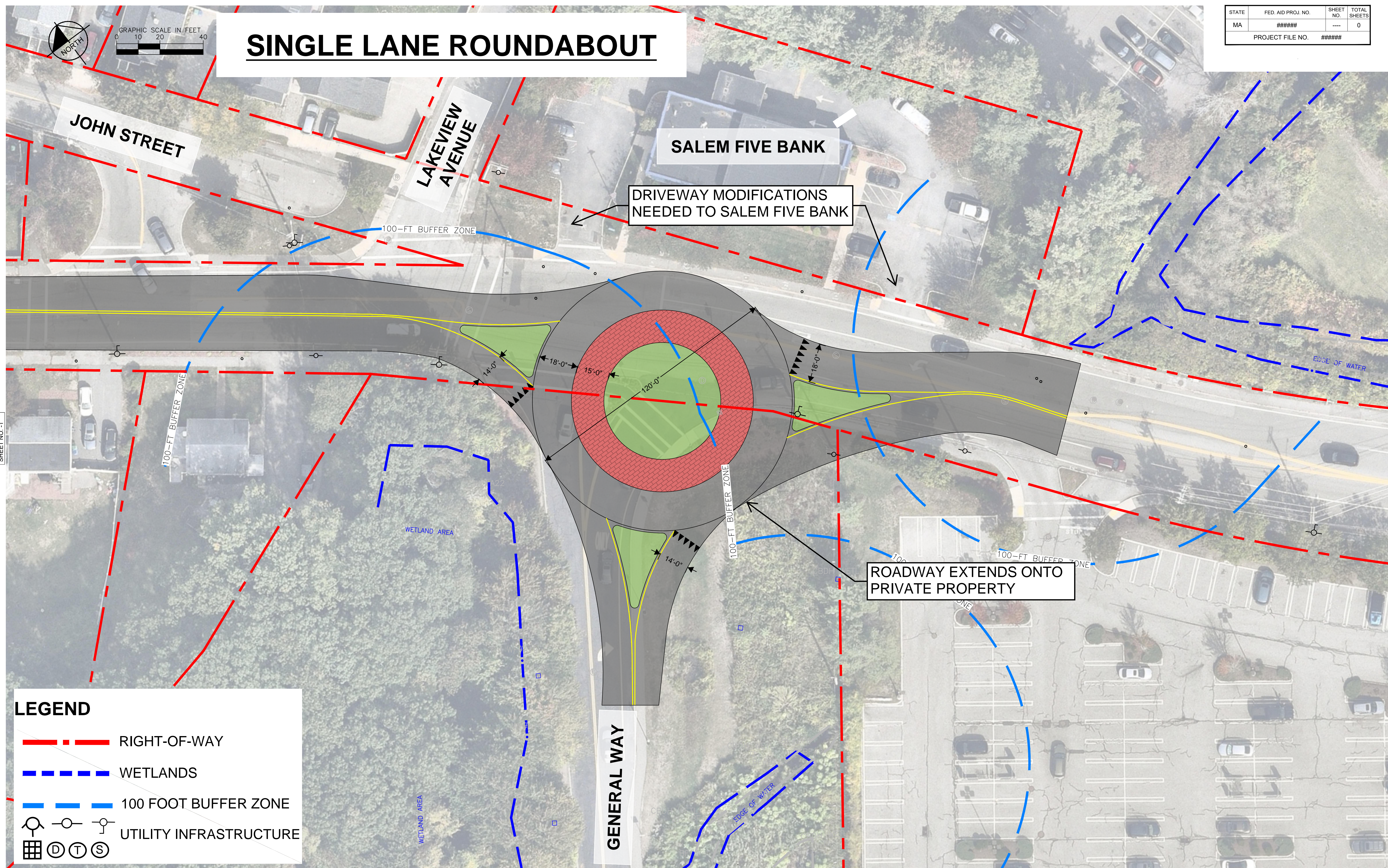
NONE

NONE

READING  
WALKERS BROOK DRIVE

STATE	FED. AID PROJ. NO.	SHEET NO.	TOTAL SHEETS
MA	#####	----	0
PROJECT FILE NO.		#####	

# SINGLE LANE ROUNDABOUT



JOHN STREET

LAKEVIEW AVENUE

SALEM FIVE BANK

DRIVEWAY MODIFICATIONS NEEDED TO SALEM FIVE BANK

ROADWAY EXTENDS ONTO PRIVATE PROPERTY

GENERAL WAY

## LEGEND

- - - RIGHT-OF-WAY
- - - WETLANDS
- - - 100 FOOT BUFFER ZONE
- UTILITY INFRASTRUCTURE
- 

CONTINUED ON SHEET NO. 1

CONTINUED ON SHEET NO. 1

FOR CONSTRUCTION PROFILE:  
NO. XX