

# PLAN OF WALKERS BROOK DRIVE

## FROM WASHINGTON STREET TO READING/WAKEFIELD TOWN LINE

### ALTERNATIVE 1 (BUFFERED BIKE LANES)

IN THE TOWN OF  
**READING**  
MIDDLESEX COUNTY

**READING  
WALKERS BROOK DRIVE  
ALTERNATIVE 1 (BUFFERED BIKE LANES)**

STATE	FED. AID PROJ. NO.	SHEET NO.	TOTAL SHEETS
MA		1	16
PROJECT FILE NO.			

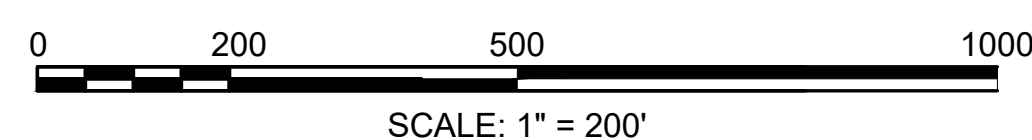
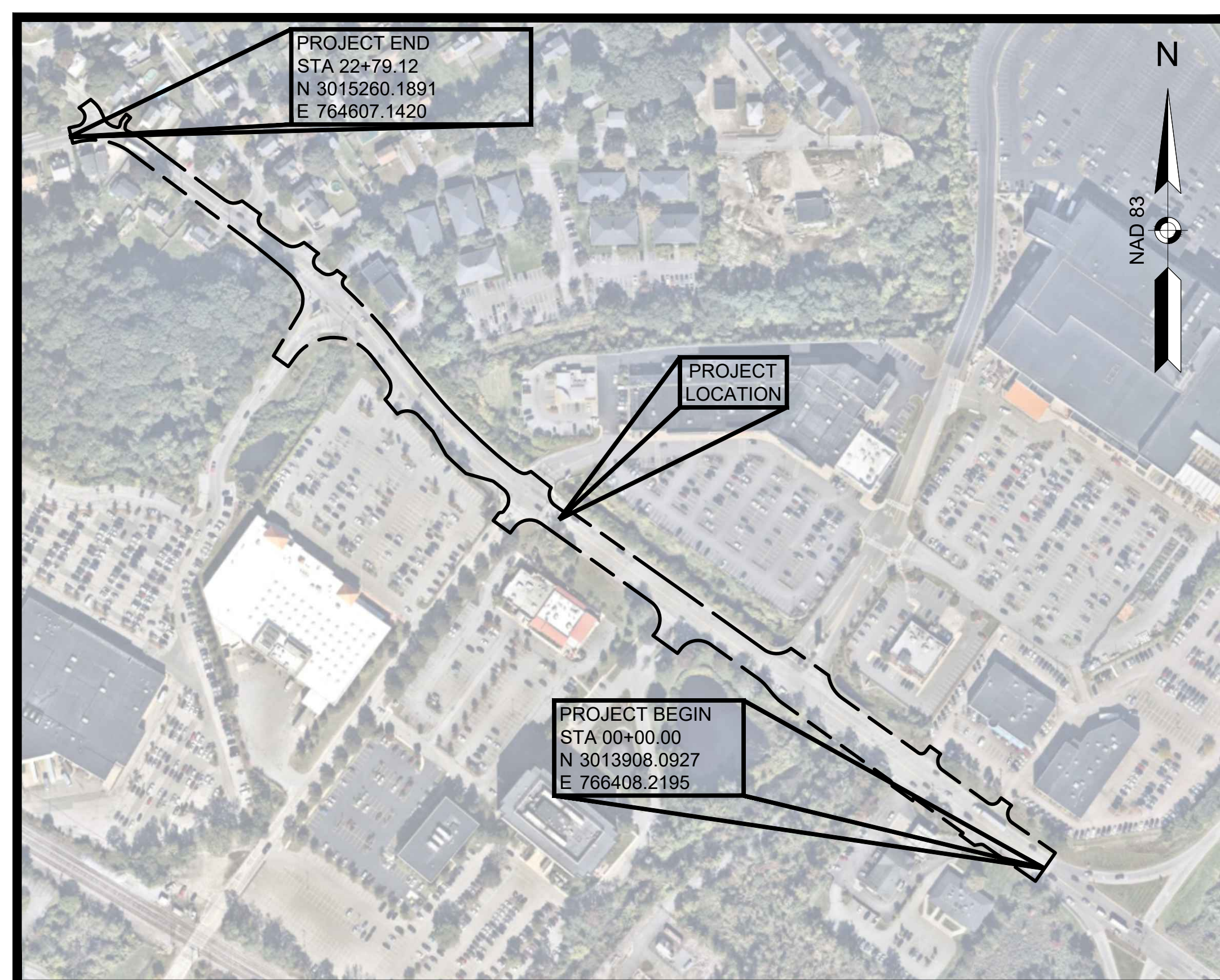
TITLE SHEET & INDEX

# 10% SUBMITTAL

SHEET NO.	DESCRIPTION
1	TITLE SHEET (ALTERNATIVE 1)
2	LEGEND & ABBREVIATIONS
3 - 6	PLANS - ALTERNATIVE 1 (BUFFERED BIKE LANES)
7	TITLE SHEET (ALTERNATIVE 2)
8 - 11	PLANS - ALTERNATIVE 2 (SHARED USE PATH)
12	TITLE SHEET (ALTERNATIVE 3)
13 - 16	PLANS - ALTERNATIVE 3 (OFF-ROAD TWO-WAY CYCLE TRACK)

**APPROXIMATE WORK LIMITS OUTSIDE OF  
EXISTING TOWN/CITY LAYOUT LINES**

ALTERNATIVE	APPROXIMATE ACREAGE (SQ. FT.)
ALTERNATIVE 1 - BUFFERED BIKE LANES	0.3991 (17,385.97)
ALTERNATIVE 2 - PROP SHARED USE PATH	0.6135 (26,722.77)
ALTERNATIVE 3 - OFF-ROAD TWO-WAY CYCLE TRACK	0.5415 (23,586.52)



LENGTH OF PROJECT = 2,267.28 FEET = 0.429 MILES

**Kimley»Horn**

© 2024 KIMLEY-HORN AND ASSOCIATES, INC.  
271 WAVERLEY OAKS ROAD, SUITE 302, WALTHAM, MA 02451  
PHONE: 781-328-0676  
WWW.KIMLEY-HORN.COM

**GENERAL SYMBOLS**

EXISTING	PROPOSED	DESCRIPTION
		JERSEY BARRIER
		CATCH BASIN
		CATCH BASIN CURB INLET
		FLAG POLE
		GAS PUMP
		MAIL BOX
		POST SQUARE
		POST CIRCULAR
		WELL
		ELECTRIC HANDHOLE
		FENCE GATE POST
		GAS GATE
		BORING HOLE
		MONITORING WELL
		TEST PIT
		HYDRANT
		LIGHT POLE
		COUNTY BOUND
		GPS POINT
		CABLE MANHOLE
		DRAINAGE MANHOLE
		ELECTRIC MANHOLE
		GAS MANHOLE
		MISC MANHOLE
		SEWER MANHOLE
		TELEPHONE MANHOLE
		WATER MANHOLE
		MASSACHUSETTS HIGHWAY BOUND
		MONUMENT
		STONE BOUND
		TOWN OR CITY BOUND
		TRAVERSE OR TRIANGULATION STATION
		TROLLEY POLE OR GUY POLE
		TRANSMISSION POLE
		UTILITY POLE W/ FIREBOX
		UTILITY POLE WITH DOUBLE LIGHT
		UTILITY POLE W / 1 LIGHT
		UTILITY POLE
		BUSH
		TREE
		STUMP
		SWAMP / MARSH
		WATER GATE
		PARKING METER
		OVERHEAD CABLE/WIRE
		CURBING
		CONTOURS (ON-THE-GROUND SURVEY DATA)
		CONTOURS (PHOTOGRAMMETRIC DATA)
		UNDERGROUND DRAIN PIPE (DOUBLE LINE 24 INCH AND OVER)
		UNDERGROUND ELECTRIC DUCT (DOUBLE LINE 24 INCH AND OVER)
		UNDERGROUND GAS MAIN (DOUBLE LINE 24 INCH AND OVER)
		UNDERGROUND SEWER MAIN (DOUBLE LINE 24 INCH AND OVER)
		UNDERGROUND TELEPHONE DUCT (DOUBLE LINE 24 INCH AND OVER)
		UNDERGROUND WATER MAIN (DOUBLE LINE 24 INCH AND OVER)
		BALANCED STONE WALL
		GUARD RAIL - STEEL POSTS
		GUARD RAIL - WOOD POSTS
		GUARD RAIL - DOUBLE FACE - STEEL POSTS
		GUARD RAIL - DOUBLE FACE - WOOD POSTS
		CHAIN LINK OR METAL FENCE
		WOOD FENCE
		SEDIMENT BARRIER
		COIR LOG SEDIMENT BARRIER
		TREE LINE
		SAWCUT LINE
		TOP OR BOTTOM OF SLOPE
		LIMIT OF EDGE OF PAVEMENT OR COLD PLANE AND OVERLAY
		BANK OF RIVER OR STREAM
		BORDER OF WETLAND
		100 FT WETLAND BUFFER
		200 FT RIVERFRONT BUFFER
		STATE HIGHWAY LAYOUT
		TOWN OR CITY LAYOUT
		COUNTY LAYOUT
		TOWN OR CITY BOUNDARY LINE
		PROPERTY LINE OR APPROXIMATE PROPERTY LINE
		EASEMENT
		APPROX. LIMITS OF DISTURBANCE OUTSIDE OF TOWN LAYOUT LINES

**TRAFFIC SYMBOLS**

EXISTING	PROPOSED	DESCRIPTION
		WIRE LOOP DETECTOR (6" x 6" TYP UNLESS OTHERWISE SPECIFIED)
		SIGN AND POST
		SIGN AND POST (2 POSTS)
		MAST ARM WITH LUMINAIRE
		OPTICAL PRE-EMPTION DETECTOR
		CONTROL CABINET, GROUND MOUNTED
		CONTROL CABINET, POLE MOUNTED
		FLASHING BEACON CONTROL AND METER PEDESTAL
		LOAD CENTER ASSEMBLY
		PULL BOX 12"x12" (OR AS NOTED)
		ELECTRIC HANDHOLE 12"x24" (OR AS NOTED)
		TRAFFIC SIGNAL CONDUIT
		DETECTABLE WARNING PANEL

**PAVEMENT MARKINGS SYMBOLS**

EXISTING	PROPOSED	DESCRIPTION
		PAVEMENT ARROW - WHITE
		LEGEND "ONLY" - WHITE
		STOP LINE
		CROSSWALK
		SOLID WHITE LINE
		SOLID YELLOW LINE
		BROKEN WHITE LINE
		BROKEN YELLOW LINE
		DOTTED WHITE LINE
		DOTTED YELLOW LINE
		DOTTED WHITE LINE EXTENSION
		DOTTED YELLOW LINE EXTENSION
		DOUBLE WHITE LINE
		DOUBLE YELLOW LINE
		BIKE LANE
		SHARED USE PATH

**ABBREVIATIONS**

GENERAL	
AADT	ANNUAL AVERAGE DAILY TRAFFIC
ABAN	ABANDON
ADJ	ADJUST
APPROX.	APPROXIMATE
A.C.	ASPHALT CONCRETE
ACCM PIPE	ASPHALT COATED CORRUGATED METAL PIPE
BIT.	BITUMINOUS
BC	BOTTOM OF CURB
BD.	BOUND
BL	BASELINE
BLDG	BUILDING
BM	BENCHMARK
BO	BY OTHERS
BOS	BOTTOM OF SLOPE
BR.	BRIDGE
CB	CATCH BASIN
CBCI	CATCH BASIN WITH CURB INLET
CC	CEMENT CONCRETE
CCM	CEMENT CONCRETE MASONRY
CEM	CEMENT
CI	CURB INLET
CIP	CAST IRON PIPE
CLF	CHAIN LINK FENCE
CL	CENTERLINE
CMP	CORRUGATED METAL PIPE
CSP	CORRUGATED STEEL PIPE
CO.	COUNTY
CONC	CONCRETE
CONT	CONTINUOUS
CONST	CONSTRUCTION
CR GR	CROWN GRADE
DHV	DESIGN HOURLY VOLUME
DI	DROP INLET
DIA	DIAMETER
DIP	DUCTILE IRON PIPE
DW	STEADY DON'T WALK - PORTLAND ORANGE
DWY	DRIVEWAY
ELEV (or EL.)	ELEVATION
EMB	EMBANKMENT
EOP	EDGE OF PAVEMENT
EXIST (or EX)	EXISTING
EXC	EXCAVATION
F&C	FRAME AND COVER
F&G	FRAME AND GRATE
FDN.	FOUNDATION
FLDSTN	FIELDSTONE
GAR	GARAGE
GD	GROUND
GG	GAS GATE
GI	GUTTER INLET
GIP	GALVANIZED IRON PIPE
GRAN	GRANITE
GRAV	GRAVEL
GRD	GUARD
HDW	HEADWALL
HMA	HOT MIX ASPHALT
HOR	HORIZONTAL
HYD	HYDRANT
INV	INVERT
JCT	JUNCTION
L	LENGTH OF CURVE
LB	LEACH BASIN
LP	LIGHT POLE
LT	LEFT
MAX	MAXIMUM
MB	MAILBOX
MH	MANHOLE
MHB	MASSACHUSETTS HIGHWAY BOUND
MIN	MINIMUM
M&O	MILL & OVERLAY
NIC	NOT IN CONTRACT
NO.	NUMBER
PC	POINT OF CURVATURE
PCC	POINT OF COMPOUND CURVATURE
PCR	PEDESTRIAN CURB RAMP
P.G.L.	PROFILE GRADE LINE
PI	POINT OF INTERSECTION
POC	POINT ON CURVE
POT	POINT ON TANGENT
PRC	POINT OF REVERSE CURVATURE
PROJ	PROJECT
PROP	PROPOSED
PSB	PLANTABLE SOIL BORROW
PT	POINT OF TANGENCY

**READING**  
**WALKERS BROOK DRIVE**  
**ALTERNATIVE 1 (BUFFERED BIKE LANES)**

STATE	FED. AID PROJ. NO.	SHEET NO.	TOTAL SHEETS
MA		2	16
PROJECT FILE NO.			

**LEGEND & ABBREVIATIONS**

**ABBREVIATIONS (cont.)**

GENERAL	
PVC	POINT OF VERTICAL CURVATURE
PVI	POINT OF VERTICAL INTERSECTION
PVT	POINT OF VERTICAL TANGENCY
PVMT	PAVEMENT
PWW	PAVED WATER WAY
R	RADIUS OF CURVATURE
R&D	REMOVE AND DISPOSE
RCP	REINFORCED CONCRETE PIPE
RD	ROAD
RDWY	ROADWAY
REM	REMOVE
RET	RETAIN
RET WALL	RETAINING WALL
ROW	RIGHT OF WAY
RR	RAILROAD
R&R	REMOVE AND RESET
R&S	REMOVE AND STACK
RT	RIGHT
SB	STONE BOUND
SHLD	SHOULDER
SMH	SEWER MANHOLE
ST	STREET
STA	STATION
SSD	STOPPING SIGHT DISTANCE
SHLO	STATE HIGHWAY LAYOUT LINE
SW	SIDEWALK
T	TANGENT DISTANCE OF CURVE/TRUCK %
TAN	TANGENT
TEMP	TEMPORARY
TC	TOP OF CURB
TOS	TOP OF SLOPE
TYP	TYPICAL
UP	UTILITY POLE
VAR	VARIES
VERT	VERTICAL
VC	VERTICAL CURVE
WG	WATER GATE
WIP	WROUGHT IRON PIPE
WM	WATER METER/WATER MAIN
X-SECT	CROSS SECTION

HIGHWAY GUARD DETAILS

NONE

TRAFFIC SIGNAL CONDUIT

NONE

WATER SUPPLY ALTERATIONS

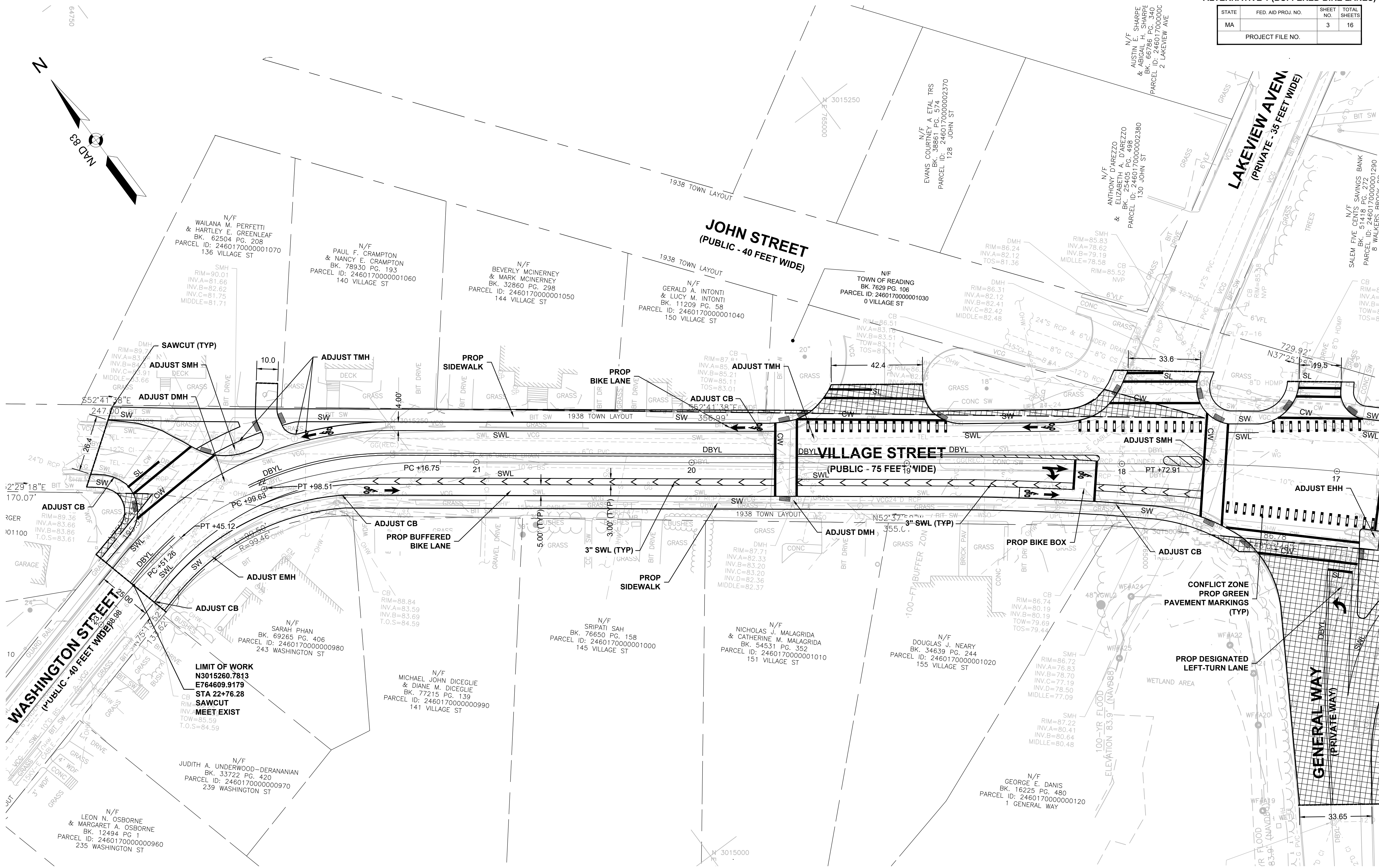
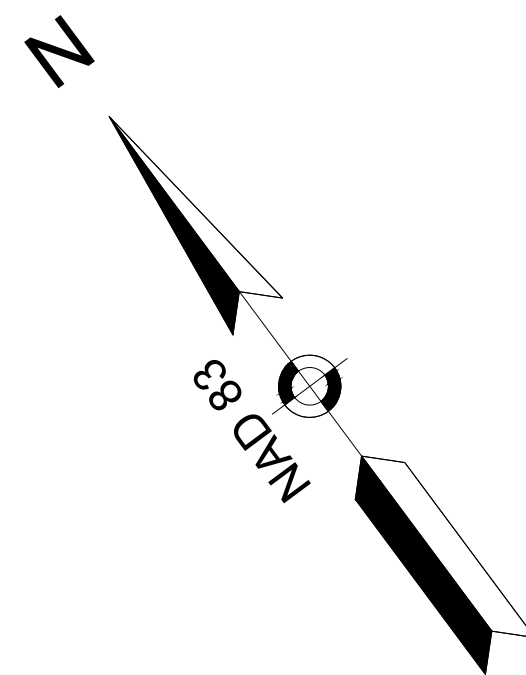
NONE

DRAINAGE DETAILS

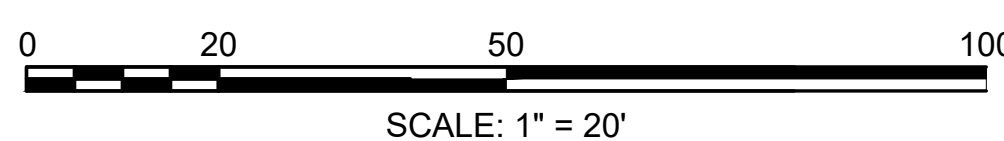
NONE

READING  
WALKERS BROOK DRIVE  
ALTERNATIVE 1 (BUFFERED BIKE LANES)

STATE	FED. AID PROJ. NO.	SHEET NO.	TOTAL SHEETS
MA		3	16
PROJECT FILE NO.			



**LIMIT OF WORK**  
**N3015260.7813**  
**E764609.9179**  
**STA 22+76.28**  
**SAWCUT**  
**MEET EXIST**



CONTINUED ON SHEET NO. 4

HIGHWAY GUARD DETAILS

TRAFFIC SIGNAL CONDUIT

WATER SUPPLY ALTERATIONS

DRAINAGE DETAILS

NONE

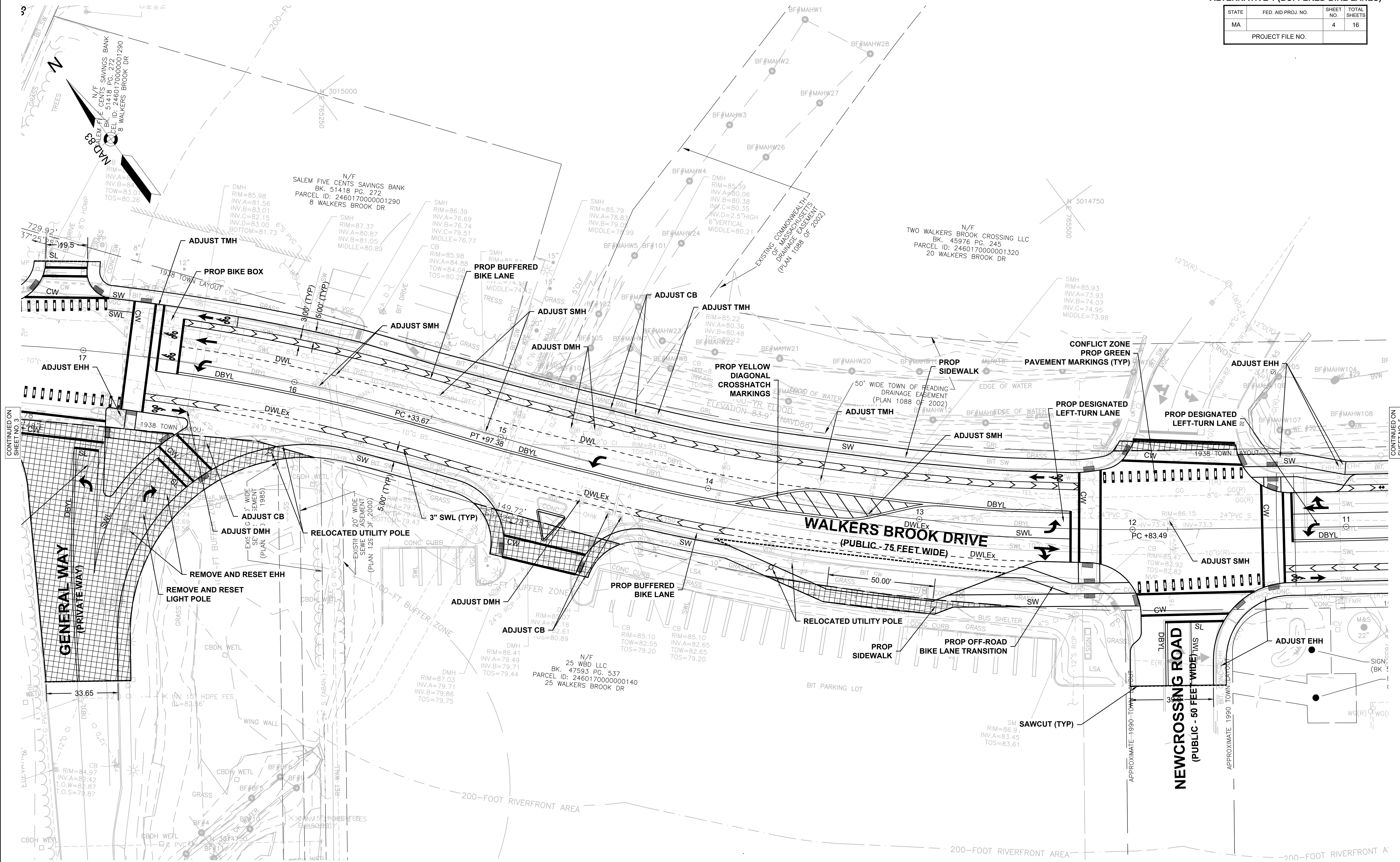
NONE

NONE

NONE

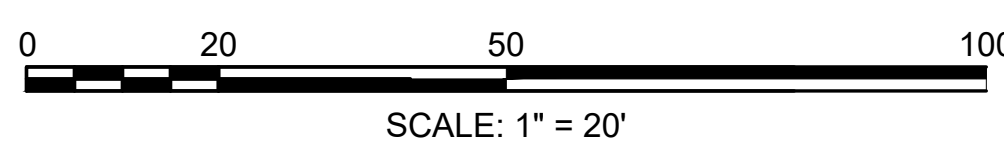
READING  
WALKERS BROOK DRIVE  
ALTERNATIVE 1 (BUFFERED BIKE LANES)

STATE	FED. AID PROJ. NO.	SHEET NO.	TOTAL SHEETS
MA		4	16
PROJECT FILE NO.			



CONTINUED ON SHEET NO. 3

CONTINUED ON SHEET NO. 5



HIGHWAY GUARD DETAILS

NONE

TRAFFIC SIGNAL CONDUIT

NONE

WATER SUPPLY ALTERATIONS

NONE

DRAINAGE DETAILS

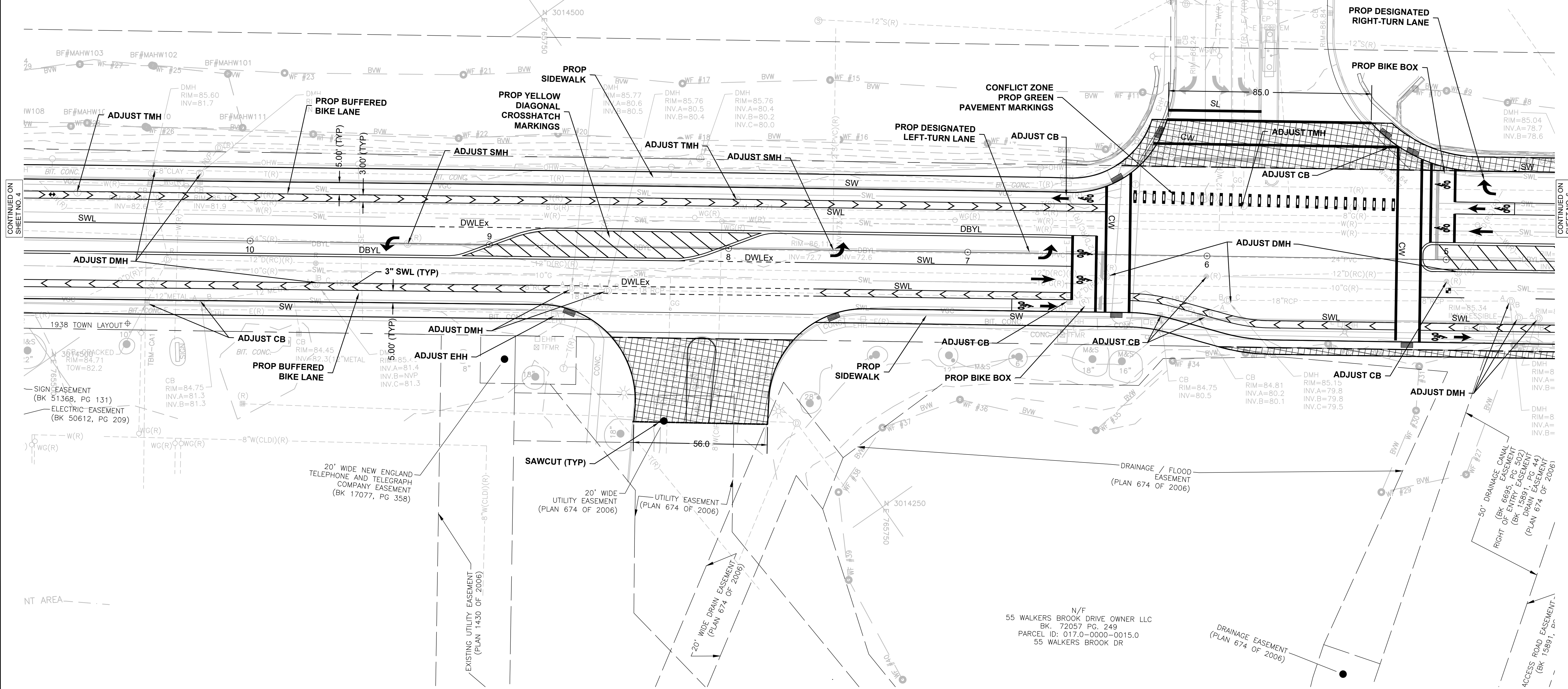
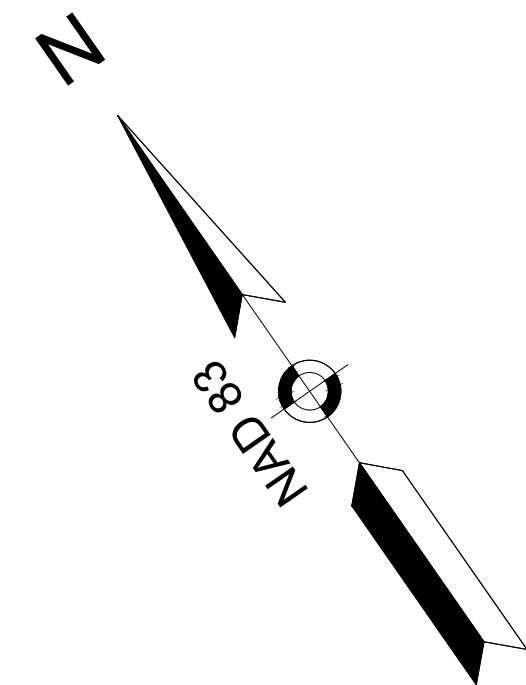
NONE

READING  
WALKERS BROOK DRIVE  
ALTERNATIVE 1 (BUFFERED BIKE LANES)

STATE	FED. AID PROJ. NO.	SHEET NO.	TOTAL SHEETS
MA		5	16
PROJECT FILE NO.			

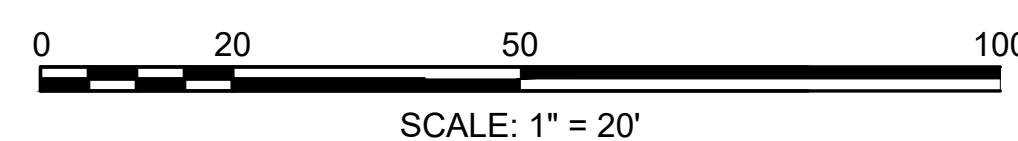
N/F  
JORDAN'S FURNITURE INC.  
BK. 44310 PG. 519  
PARCEL ID: 018.0-0702-0003.0  
50 WALKERS BROOK DR

N/F  
55 WALKERS BROOK DRIVE OWNER LLC  
BK. 72057 PG. 249  
PARCEL ID: 017.0-0000-0015.0  
55 WALKERS BROOK DR



CONTINUED ON SHEET NO. 4

CONTINUED ON SHEET NO. 6



HIGHWAY GUARD DETAILS

NONE

TRAFFIC SIGNAL CONDUIT

NONE

WATER SUPPLY ALTERATIONS

NONE

DRAINAGE DETAILS

NONE

READING  
WALKERS BROOK DRIVE  
ALTERNATIVE 1 (BUFFERED BIKE LANES)

STATE	FED. AID PROJ. NO.	SHEET NO.	TOTAL SHEETS
MA		6	16
PROJECT FILE NO.			

N  
 88 CW  
 N/F  
 WALKERS BROOK CROSSING LLC  
 BK. 38239 PG. 330  
 PARCEL ID: 018.0-0000-0004.0  
 70 WALKERS BROOK DR

N/F  
 PRM AUTO READING LLC  
 BK. 72229 PG. 280  
 PARCEL ID: 018.0-0000-0005.0  
 88 WALKERS BROOK DR

N/F  
 PRM AUTO READING LLC  
 BK. 72229 PG. 280  
 PARCEL ID: 018.0-0000-0006.0  
 98 WALKERS BROOK DR

N/F  
 BOSTON GAS COMPANY  
 BK. 12571 PG. 30  
 PARCEL ID: 012.0-0000-0130.0  
 0 JOHN STREET

N/F  
 87 WALKERS BROOK DRIVE LLC  
 BK. 1386 PG. 119  
 PARCEL ID: 013.0-0000-0003.0  
 87 WALKERS BROOK DR

N/F  
 PIN PROPERTIES LLC  
 BK. 1506 PG. 37  
 PARCEL ID: 013.0-0000-0002.0  
 95 WALKERS BROOK DR

READING  
WAKEFIELD  
TOWN LINE

PROJECT BEGIN  
 N3013908.0927  
 E766408.2195  
 STA 0+00  
 SAWCUT  
 MEET EXIST

