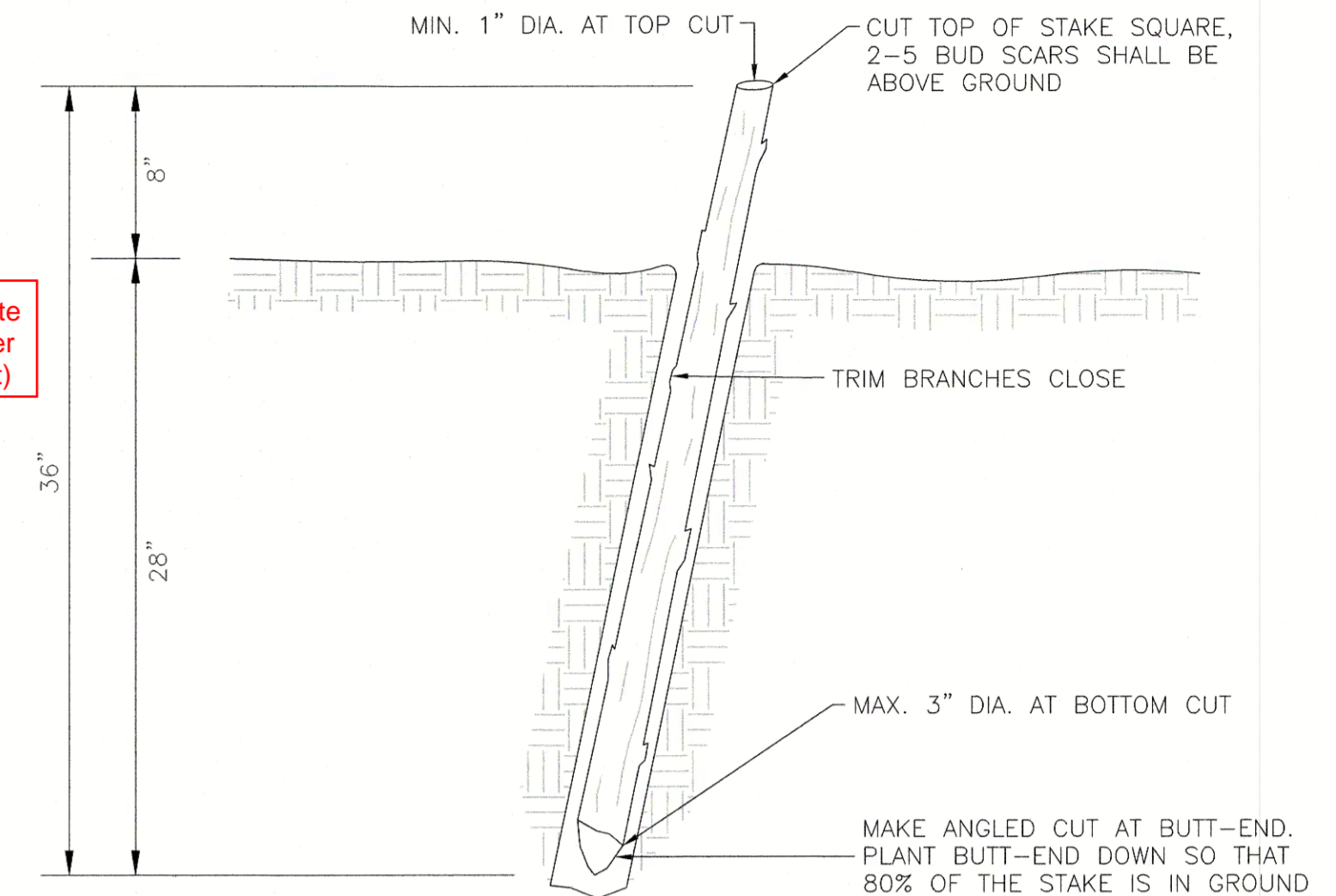
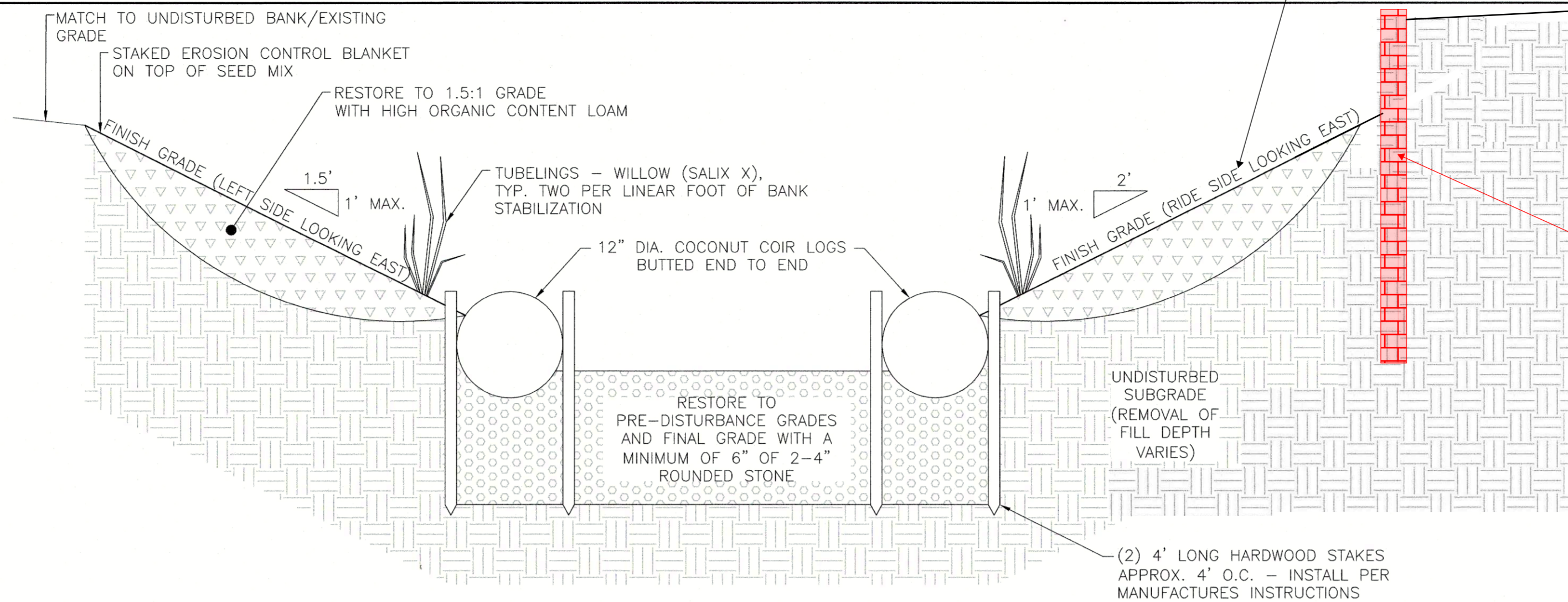




LEGEND OF ABBREVIATIONS & SYMBOLS

EXISTING 2-FOOT CONTOUR	---	92
EXISTING 10-FOOT CONTOUR	---	90
EXISTING SPOT ELEVATION	x	93.39
EDGE OF DISTURBED	~~~~~	
4'H CHAIN LINK FENCE	-x-x-	
6'H STOCKADE FENCE	-o-o-	
SILT SOCK	-•-•-	
EDGE OF WETLAND	-•-•-	
25' FROM WETLANDS	-•-•-	
35' NO BUILD ZONE	-•-•-	
100' WETLAND BUFFER ZONE	-•-•-	
INVERT	INV.	
GARAGE FLOOR	G.F.	

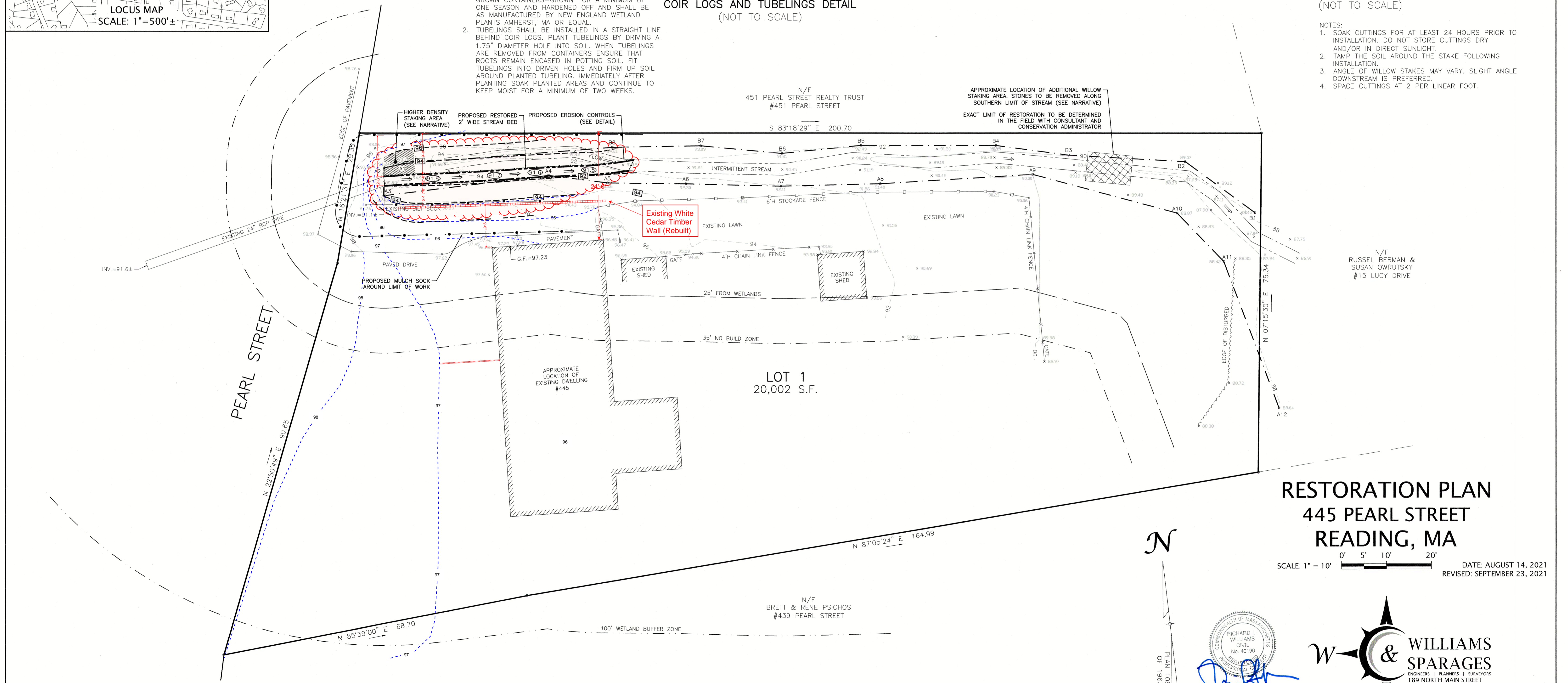


- NOTES:**
- TUBELINGS SHALL BE FURNISHED IN NURSERY GROWN CONTAINERS—GROWN FOR A MINIMUM OF ONE SEASON AND HARDENED OFF AND SHALL BE AS MANUFACTURED BY NEW ENGLAND WETLAND PLANTS AMHERST, MA OR EQUAL.
 - TUBELINGS SHALL BE INSTALLED IN A STRAIGHT LINE BEHIND COIR LOGS. PLANT TUBELINGS BY DRIVING A 1.75" DIAMETER HOLE INTO SOIL. WHEN TUBELINGS ARE REMOVED FROM CONTAINERS ENSURE THAT ROOTS REMAIN ENCASED IN POTTING SOIL. FIT TUBELINGS INTO DRIVEN HOLES AND FIRM UP SOIL AROUND PLANTED TUBELING. IMMEDIATELY AFTER PLANTING SOAK PLANTED AREAS AND CONTINUE TO KEEP MOIST FOR A MINIMUM OF TWO WEEKS.

BANK STABILIZATION WITH COCONUT COIR LOGS AND TUBELINGS DETAIL (NOT TO SCALE)

DENSE STAKING - WILLOW STAKE INSTALLATION DETAIL (NOT TO SCALE)

- NOTES:**
- SOAK CUTTINGS FOR AT LEAST 24 HOURS PRIOR TO INSTALLATION. DO NOT STORE CUTTINGS DRY AND/OR IN DIRECT SUNLIGHT.
 - TAMP THE SOIL AROUND THE STAKE FOLLOWING INSTALLATION.
 - ANGLE OF WILLOW STAKES MAY VARY. SLIGHT ANGLE DOWNSTREAM IS PREFERRED.
 - SPACE CUTTINGS AT 2 PER LINEAR FOOT.



- PLAN NOTES:**
- ALL ELEVATIONS SHOWN ARE REFERENCED TO AN ASSUMED DATUM.
 - EXISTING TOPOGRAPHIC INFORMATION SHOWN IS THE RESULT FROM AN ACTUAL INSTRUMENT SURVEY CONDUCTED BY WILLIAMS & SPARAGES ON AUGUST 12, 2021.
 - WETLAND RESOURCE AREA SHOWN DELINEATED BY WILLIAMS & SPARAGES ON AUGUST 10, 2021.

**RESTORATION PLAN
445 PEARL STREET
READING, MA**

SCALE: 1" = 10' DATE: AUGUST 14, 2021
REVISED: SEPTEMBER 23, 2021

PLAN 1027
OF 1963