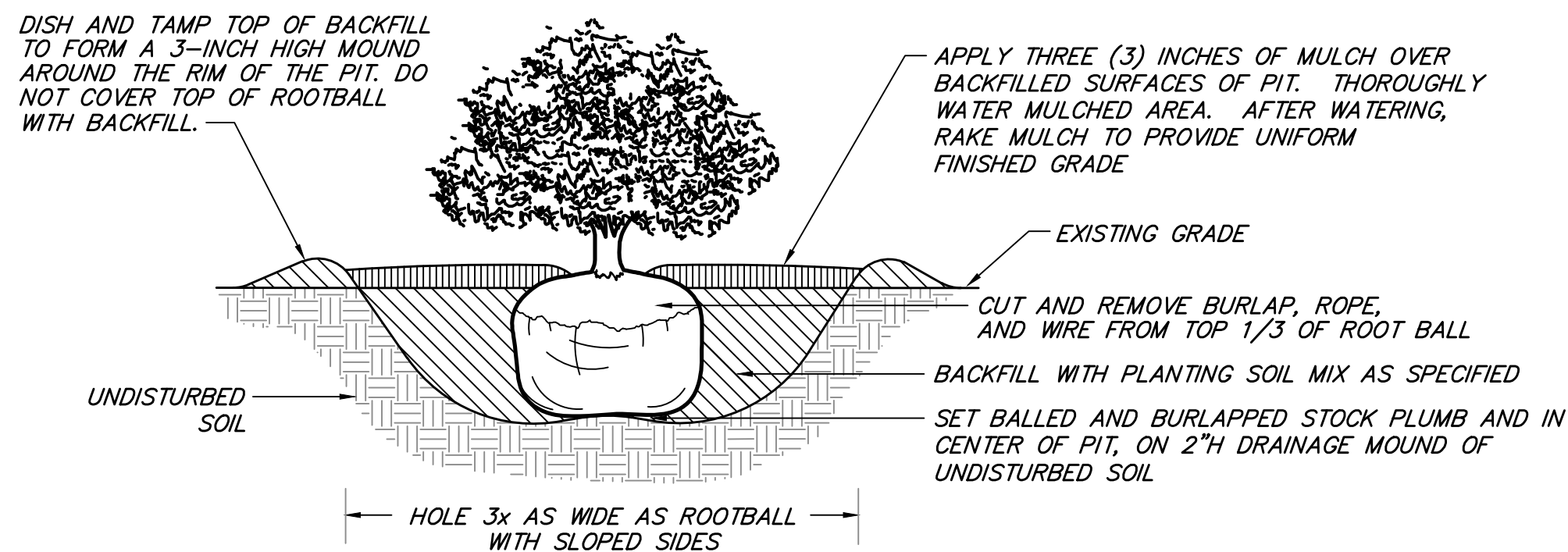


TYPICAL SHRUB PLANTING DETAIL NOTES:

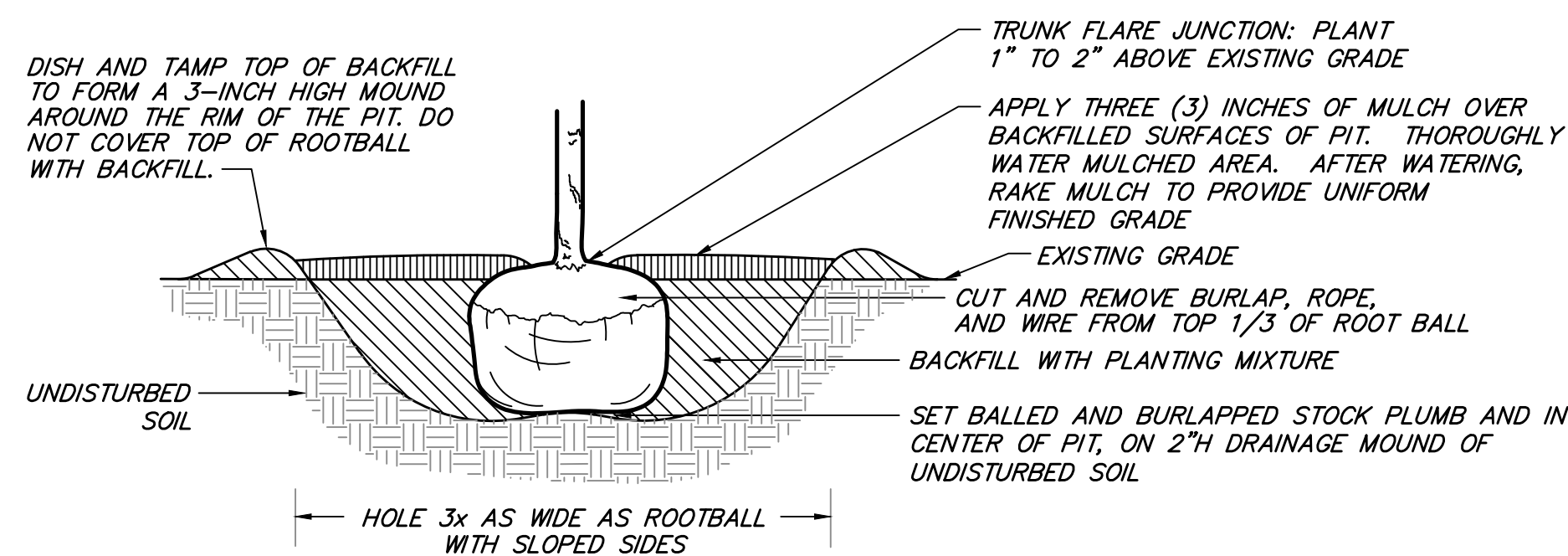
- * PLANT SO THAT TOP OF ROOTBALL IS 1-2" ABOVE SURROUNDING GRADE.
- * MULCH SHALL NOT BE PILED AGAINST THE TRUNK OR STEMS OF SHRUB UNDER ANY CIRCUMSTANCES. MULCH LAYER SHOULD TAPER DOWN TOWARD TRUNK AS INDICATED.
- * DO NOT USE PLANTING STOCK IF ROOTBALL IS CRACKED OR BROKEN BEFORE OR DURING PLANTING PROCESS.
- * PLACE BACKFILL AROUND ROOTBALL IN LAYERS, TAMPING TO SETTLE BACKFILL AND ELIMINATE VOIDS AND AIR POCKETS. WHEN PIT IS APPROX. 1/2 BACKFILLED, WATER THOROUGHLY BEFORE PLACING REMAINDER OF BACKFILL. REPEAT WATERING UNTIL NO MORE IS ABSORBED. WATER AGAIN AFTER PLACING AND TAMPING FINAL LAYER OF BACKFILL.



1 TYPICAL SHRUB PLANTING DETAIL
NOT TO SCALE

TYPICAL TREE PLANTING DETAIL NOTES:

- * HOLE TO BE DUG NO DEEPER THAN THE ROOTBALL AS MEASURED FROM THE TRUNK FLARE TO THE BOTTOM OF THE ROOTBALL
- * MULCH SHALL NOT BE PILED AGAINST THE TRUNK OR BASE OF TREE UNDER ANY CIRCUMSTANCES. MULCH LAYER SHOULD TAPER DOWN TOWARD TRUNK AS INDICATED.
- * DO NOT USE PLANTING STOCK IF ROOTBALL IS CRACKED OR BROKEN BEFORE OR DURING PLANTING PROCESS.
- * PLACE BACKFILL AROUND ROOTBALL IN LAYERS, TAMPING TO SETTLE BACKFILL AND ELIMINATE VOIDS AND AIR POCKETS. WHEN PIT IS APPROX. 1/2 BACKFILLED, WATER THOROUGHLY BEFORE PLACING REMAINDER OF BACKFILL. REPEAT WATERING UNTIL NO MORE IS ABSORBED. WATER AGAIN AFTER PLACING AND TAMPING FINAL LAYER OF BACKFILL.

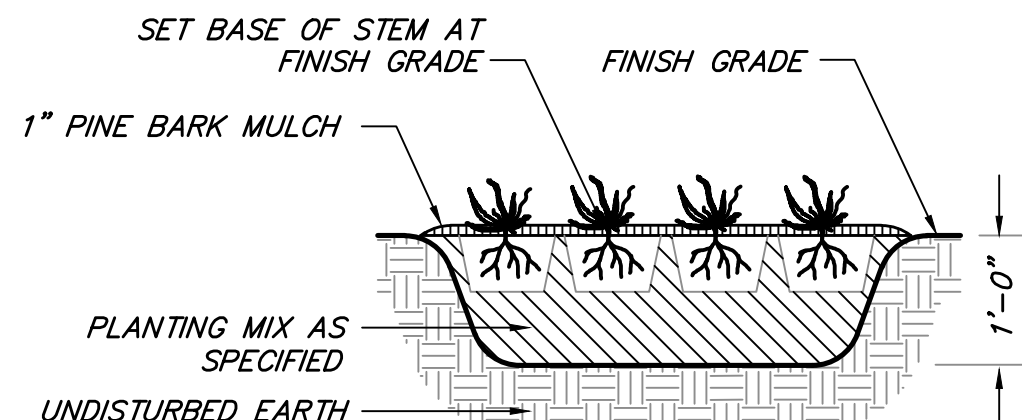


2 TYPICAL TREE PLANTING DETAIL
NOT TO SCALE

LEGEND

EXISTING	PROPOSED
--- 102 ---	SURFACE CONTOUR
—●—●—●—	STONE WALL
—●—●—●—	EDGE OF PAVEMENT
—●—●—●—	CURB WITH TOP AND BOTTOM CURB ELEVATION
—●—●—●—	EDGE OF WOODED AREA
—●—●—●—	SEWERLINE & MANHOLE WITH PIPE SIZE, MATERIAL & FLOW DIRECTION
—●—●—●—	DRAINLINE WITH PIPE SIZE, MATERIAL & FLOW DIRECTION, CATCHBASIN, MAINHOLE & ROUND CATCHBASIN
—●—●—●—	WATER MANHOLE, WATER MAIN WITH SIZE, TEE, GATE VALVE & FIRE HYDRANT
—●—●—●—	GAS MAIN WITH SIZE & GATE VALVE
—●—●—●—	EXISTING UTILITY POLE WITH DESIGNATION OVERHEAD WIRES AND GUY POLE
—●—●—●—	ELECTRIC MANHOLE & UNDERGROUND ELECTRIC LINES
—●—●—●—	TELEPHONE MANHOLE & UNDERGROUND TELEPHONE LINES
—●—●—●—	LIMIT OF BORDERING VEGETATED WETLAND (BVW) WITH FLAG NUMBER AND ELEVATION
—●—●—●—	LIMIT OF 100' WETLAND BUFFER ZONE
—●—●—●—	LIMIT OF 25' ZONE OF NATURAL VEGETATION (ZNV)
—●—●—●—	LIMIT OF 35' NO BUILD BUFFER ZONE (NB)
—●—●—●—	SPOT ELEVATION
—●—●—●—	PROMINENT DECIDUOUS TREE WITH ELEVATION, SIZE AND SPECIES
—●—●—●—	LIGHT POLE
—●—●—●—	REINFORCED CONCRETE PIPE
—●—●—●—	CEMENT LINED DUCTILE IRON
—●—●—●—	POLYVINYL CHLORIDE
—●—●—●—	COPPER
—●—●—●—	SEWER MANHOLE
—●—●—●—	DRAIN MANHOLE
—●—●—●—	CATCH BASIN
—●—●—●—	ELECTRIC METER
—●—●—●—	WATER METER
—●—●—●—	FOUND
—●—●—●—	DRILL HOLE IN STONE BOUND
—●—●—●—	VERTICAL GRANITE CURB
—●—●—●—	BITUMINOUS CONCRETE
—●—●—●—	BULKHEAD
—●—●—●—	ABOVE GRADE
—●—●—●—	BOLT OVER MAIN OUTLET
—●—●—●—	DOWNSPOUT
—●—●—●—	MAILBOX
—●—●—●—	FIRST FLOOR AT METAL THRESHOLD
—●—●—●—	FENCE
—●—●—●—	SHED

NOTE: SPACE PLANTS AS INDICATED ON DRAWING



3 GROUNDCOVER PLANTING
NOT TO SCALE

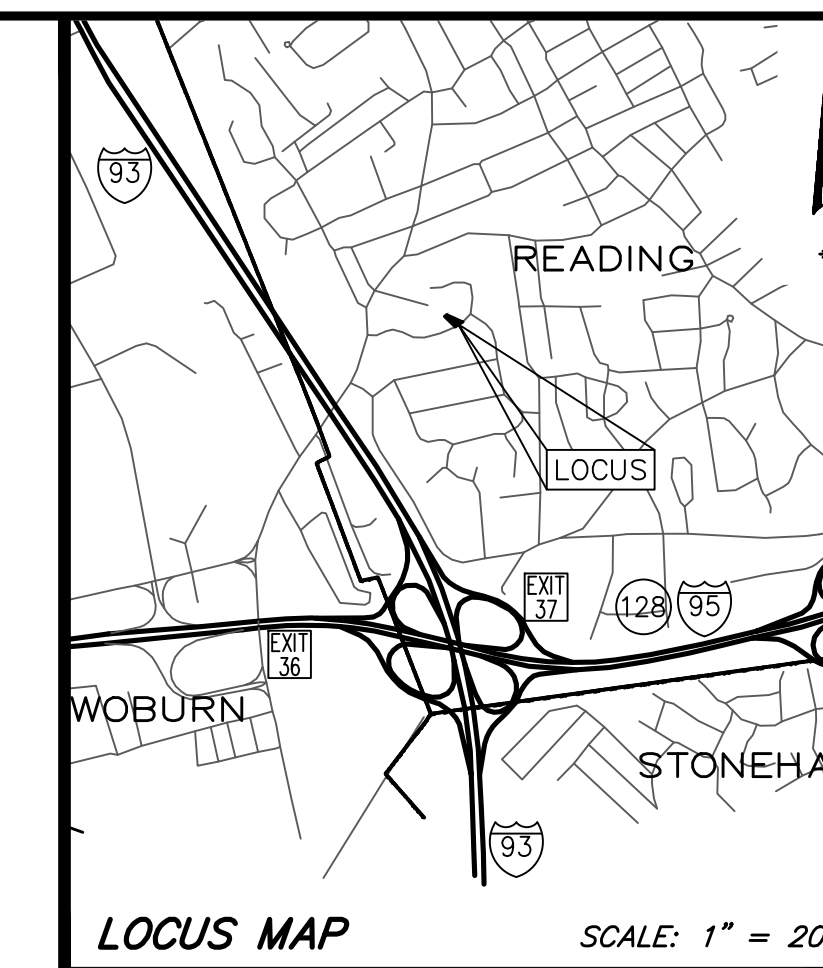
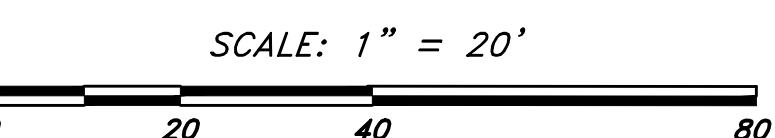
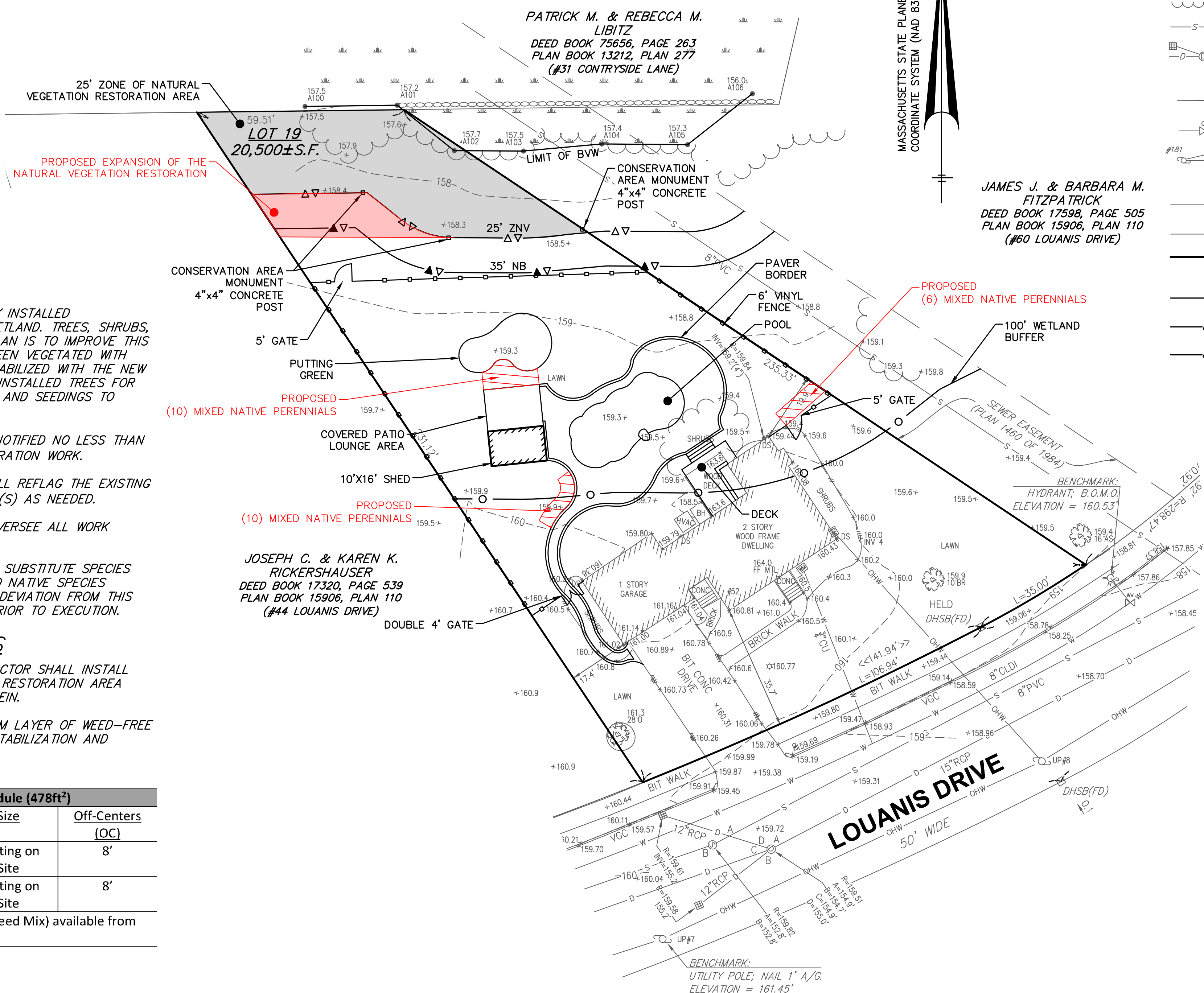
GENERAL NOTES

- THIS PLAN IS DESIGNED TO AID IN THE IMPROVEMENT OF THE RECENTLY INSTALLED RESTORATION AREA WITHIN BUFFER ZONE TO BORDERING VEGETATED WETLAND. TREES, SHRUBS, AND HERBACEOUS PLANTINGS WERE INSTALLED. THE INTENT OF THIS PLAN IS TO IMPROVE THIS PLANTING AREA FOR LONG TERM SURVIVABILITY. THIS LOCATION HAS BEEN VEGETATED WITH APPROVED NATIVE PLANTINGS. SINCE DISTURBANCE, THE GROUND IS STABILIZED WITH THE NEW PLANTINGS. THE EXPRESSED INTENT OF THIS PLAN IS TO SPREAD OUT INSTALLED TREES FOR THEIR FUTURE GROWTH AND INSTALL SUPPLEMENTAL NATIVE PLANTINGS AND SEEDINGS TO INCREASE VEGETATIVE COVER AND NATIVE SPECIES DIVERSITY.
- THE TOWN OF READING CONSERVATION COMMISSION ("RCC") SHALL BE NOTIFIED NO LESS THAN ONE (1) WEEK IN ADVANCE OF THE INITIATION OF ANY WETLAND RESTORATION WORK.
- PRIOR TO ANY RESTORATION WORK A QUALIFIED WETLAND SCIENTIST WILL REFLAG THE EXISTING JURISDICTIONAL WETLAND BOUNDARY ABUTTING THE RESTORATION AREA(S) AS NEEDED.
- A QUALIFIED WETLAND SCIENTIST OR RESTORATION ECOLOGIST SHALL OVERSEE ALL WORK PERFORMED UNDER THIS PLAN.
- IN THE EVENT THAT SPECIFIED PLANTINGS ARE UNAVAILABLE, SUITABLE SUBSTITUTE SPECIES MAY BE CONSIDERED, HOWEVER PLANT SELECTION SHALL BE LIMITED TO NATIVE SPECIES SUITABLE TO THE GROWING CONDITIONS OF THE SITE. ANY PROPOSED DEVIATION FROM THIS PLAN MUST BE SUBMITTED TO THE RCC FOR REVIEW AND APPROVAL PRIOR TO EXECUTION.

NATIVE PLANTING AND SEEDING SCHEDULES

- FOLLOWING RELOCATION OF PREVIOUSLY INSTALLED TREES, THE CONTRACTOR SHALL INSTALL NATIVE PLANTS AND APPLY NATIVE SEED MIXES WITHIN THE EXPANDED RESTORATION AREA PRESCRIBED TO INCLUDE NATURAL VEGETATION AREA AS DETAILED HEREIN.
- FOLLOWING APPLICATION OF NATIVE SEED MIXES, APPLY A THIN UNIFORM LAYER OF WEED-FREE STRAW MULCH TO ALL SEEDED AREAS. STRAW MULCH PROVIDES SOIL STABILIZATION AND MOISTURE RETENTION IN PROMOTION OF SEED GERMINATION.

Natural Vegetation Enhancement Area - Native Planting Schedule (478ft ²)				
Common Name	Scientific Name	Quantity	Size	Off-Centers (OC)
swamp white oak	Quercus bicolor	3	Existing on Site	8'
Red maple	Acer rubrum	3	Existing on Site	8'
Native Seed Mix: Apply 2lbs of New England Conservation/Wildlife Mix (Seed Mix) available from New England Wetland Plants Inc.				



#52
LOUANIS DRIVE

Reading, Massachusetts 01867

ASSESSORS:
MAP 6 BLOCK 0 LOT 163

PREPARED FOR:
SUSAN SCHELLENBACH

52 Louanis Drive
Reading, Massachusetts 01867

HANCOCK ASSOCIATES

Civil Engineers
Land Surveyors
Wetland Scientists

185 CENTRE STREET, DANVERS, MA 01923
VOICE (978) 777-3050, FAX (978) 774-7816
WWW.HANCOCKASSOCIATES.COM



06/21/24

NO.	BY	DATE	ISSUE/REVISION DESCRIPTION
1	JTE	6/25/24	PROPOSED VEGETATION REV.

DATE: 11/29/2023 DESIGN BY: MTC
SCALE: 1" = 20' DRAWN BY: PSL
APPRVD. BY: MTC CHECK BY: MTC

ASBUILT PLAN

PLOT DATE: Jun 25, 2024 9:19 am
PATH: P:\CADD 3D Projects\26464-Schellenbach-Reading\Eng\DWG\

DWG: 26464_ob (restoration) dwg

LAYOUT: asbuilt

SHEET: 1 OF 1

PROJECT NO.: **26464**

C-1