

FOREST EXISTING CONDITION: **ST**

SUMMARY:

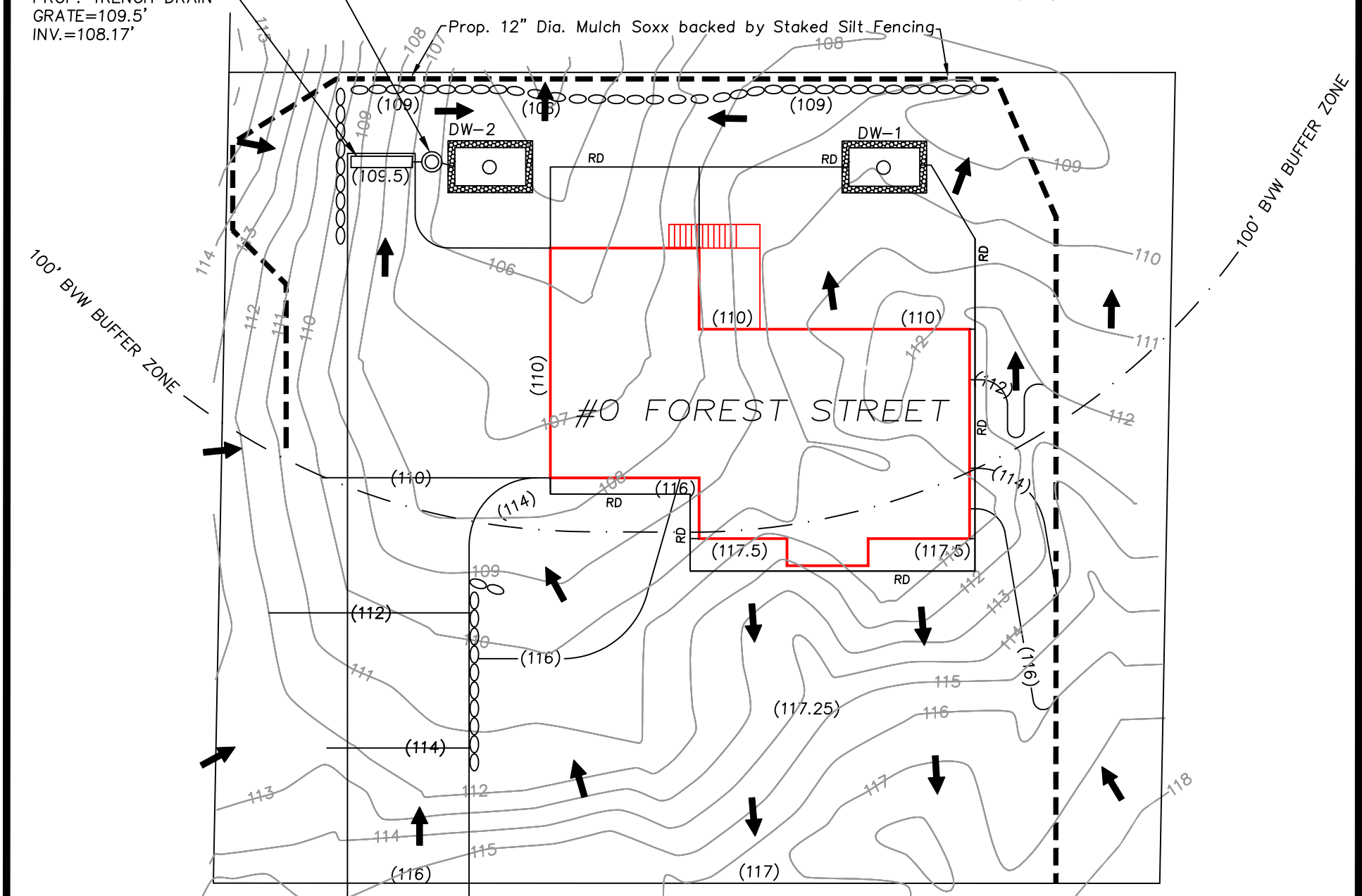
- 1) SURFACE WATER FLOW W/IN 100 BWV BUFFER MAINTAINS EXISTING FLOW PATTERN.
- 2) DEVELOPED CONDITION OFFERS IMPROVED STORMWATER QUALITY THRU PRETREATMENT.

PREPARED BY:
 SULLIVAN ENGINEERING GROUP, LLC
 P.O. BOX 2004
 WOBURN, MA 01888
 (781) 854-8644

DATE: 5/2/24 SCALE: 1"=20'

PROP. MINI CONC. MANHOLE
 W/ 2 FOOT SUMP
 RIM=109.5'
 INV. IN.=107.4'
 INV. OUT=107.3'

PROP. TRENCH DRAIN
 GRATE=109.5'
 INV.=108.17'



FOREST PROPOSED CONDITION: **ST** WATERSHED ANALYSIS