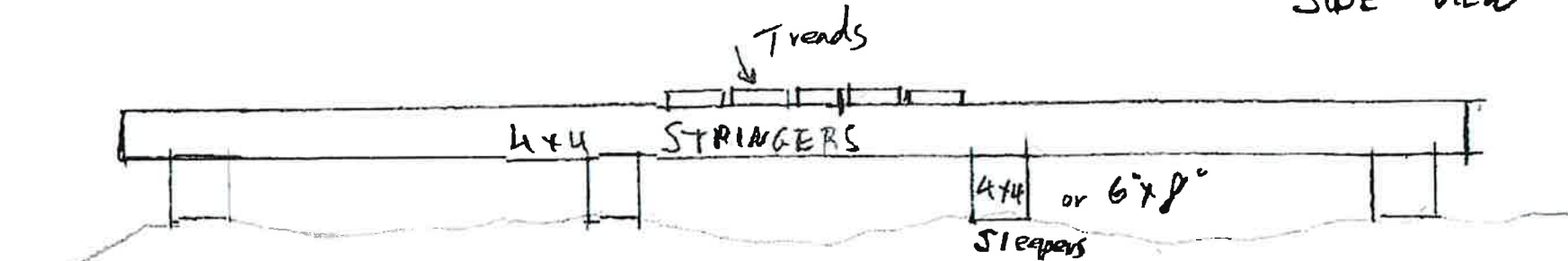


All Ground Contact or Plastic members Notes for 48' Bog Bridge in Pinevale

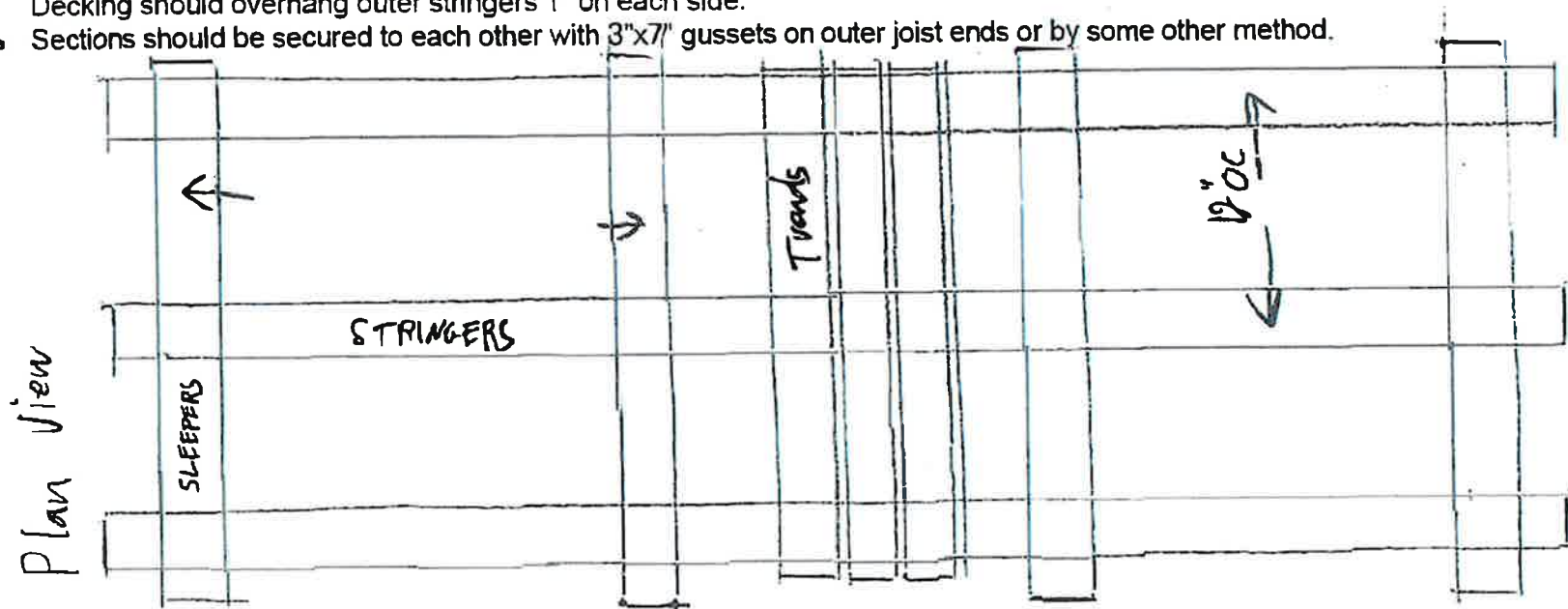
Bog Bridge

- Standard bog bridge section is 10' long and 48" wide. Four 10' sections recommended at Pinevale.
- Two 4x4 x 48" sleepers are used to support each 10' section. Sleepers are made from .6 pressure treated stock.
- Four 4x4 x 10' stringers are used for each 10' section. (Note: plan below is for a narrower bog bridge and shows only 3 stringers.) Stringers are made from ground contact PT. Outer stringers should be 46" apart so decking overhangs.
- Ramp(s) at end go to ground level (no more than 2" step allowed per ADA). Use same stock as for sleepers (.6 PT) since stringers will be in contact with ground. Provide a sill or otherwise secure end of ramp so stringers don't spread. 8' long ramp recommended at Pinevale.

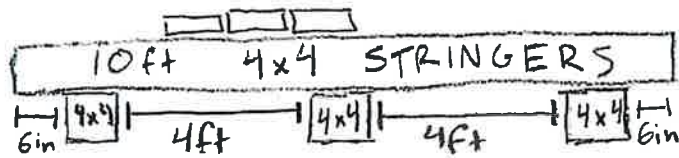
SIDE VIEW



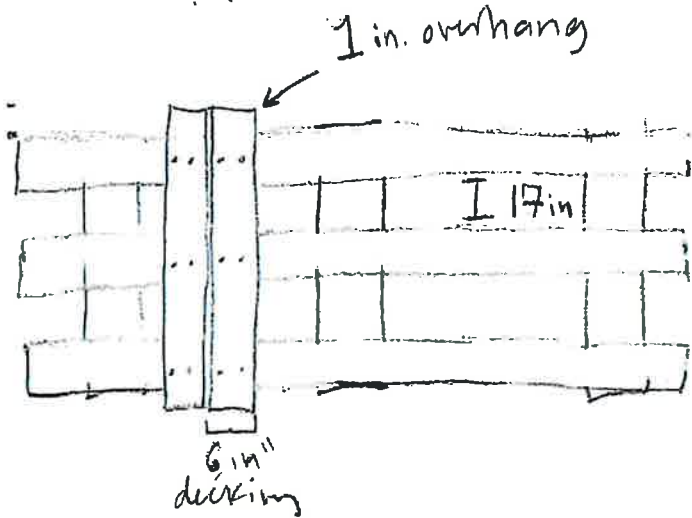
- Stringers secured to sleepers with 5" long lag screws. Countersink so lag screw heads don't interfere with decking. Bore with 1-1/8" spade bit. Use 1" flat washers.
- Composite decking to be used for walking surface. Each piece to be 48" long with $\leq 1/2$ " gap between planks (per ADA). Decking should overhang outer stringers 1" on each side.
- Sections should be secured to each other with 3"x7" gussets on outer joist ends or by some other method.



Side view



top view



6 in boards, x 10 ft sec

20 boards / 10 ft sec

However

1/2 in gap between each board

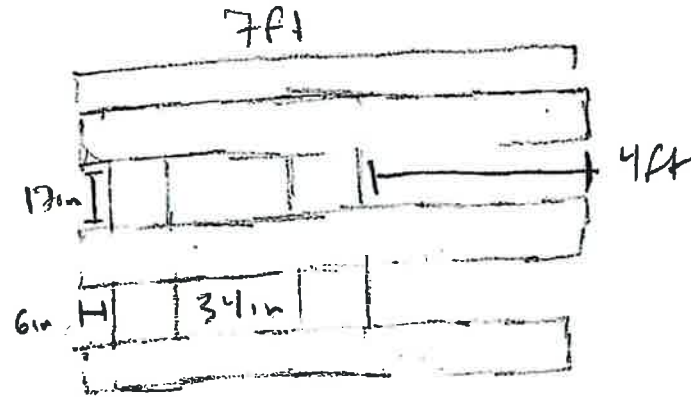
= 18 boards

x2

36

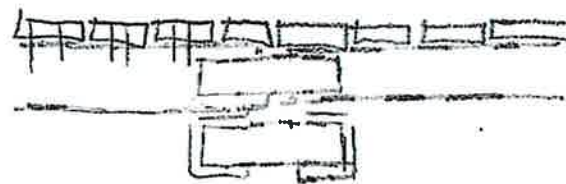
at to scale

- built from .6 FT stock
- 2, 10ft sections, 1, 7ft modified section
- 2 ramps on each end
- treading will be light grey composite



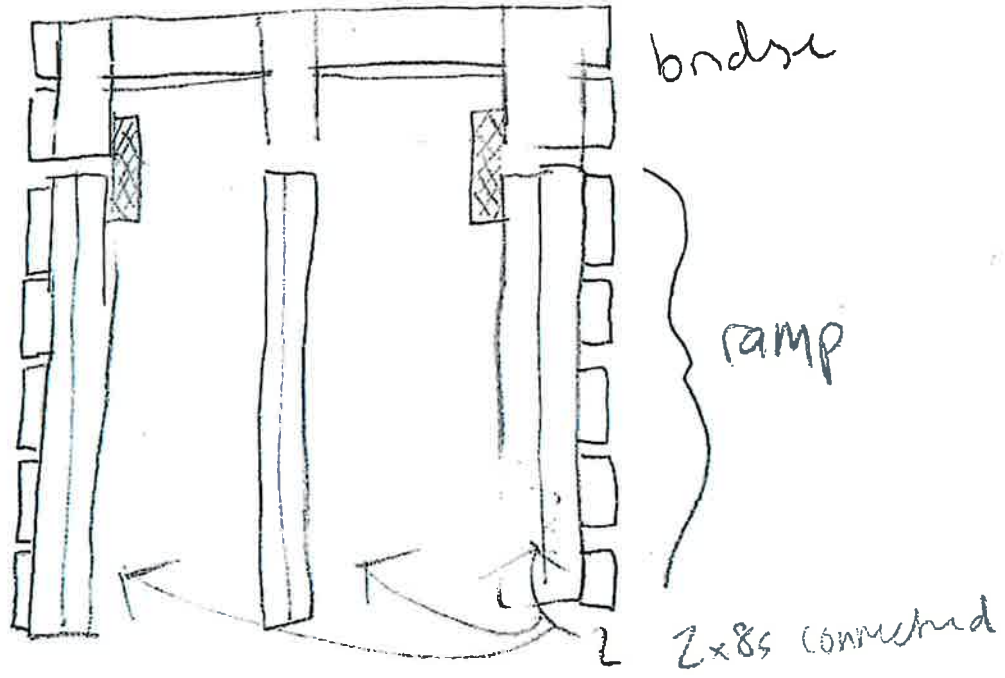
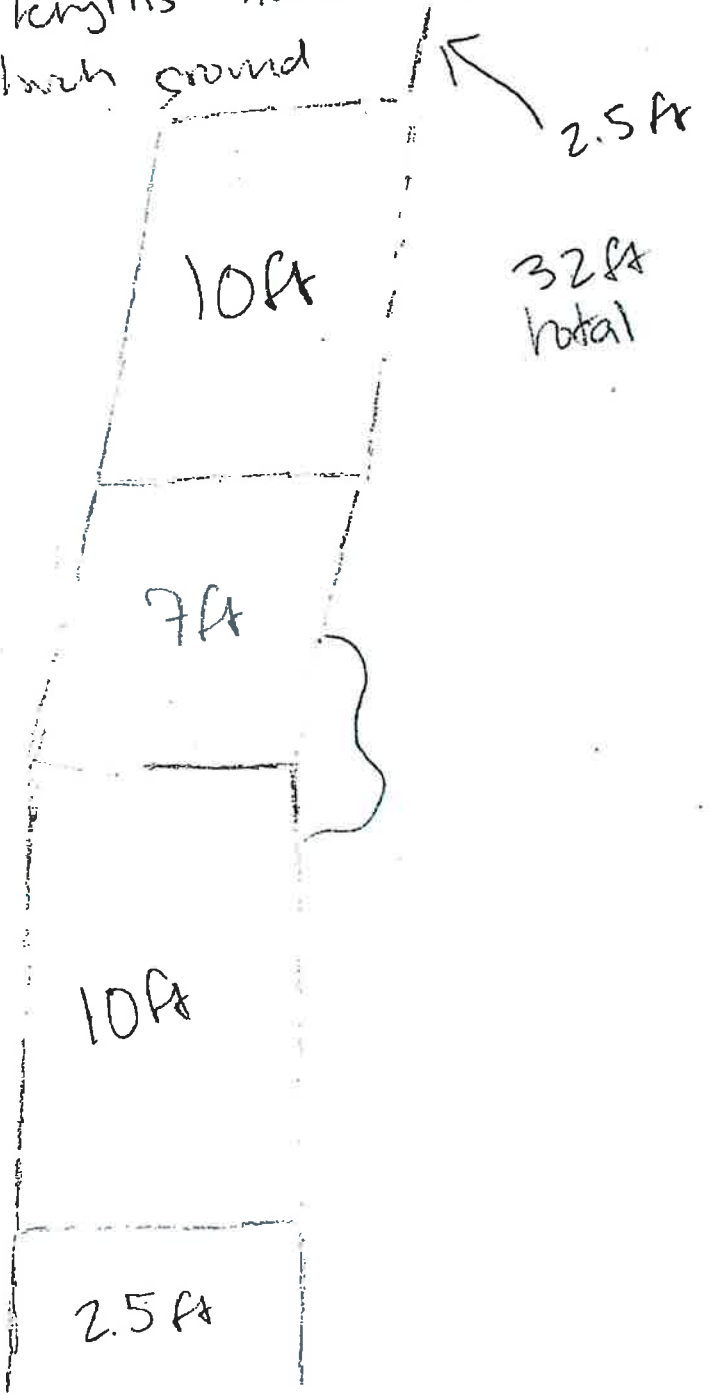
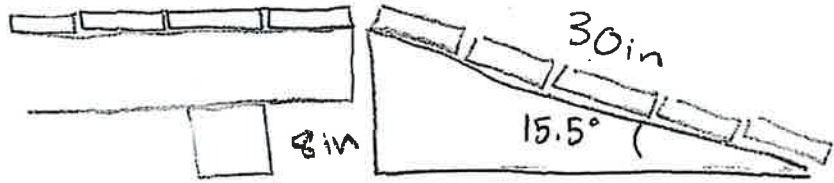
rests on bog

• if on more sleepers, bridge will be uneven



connection

- buy 2, 10ft 4x8s - cut into 6, 2.5ft lengths
- cut 2.5ft lengths horizontally at 15.5° angle
- directly touch ground



NO SLEEPERS



