

# Town of Reading

Reading Dog Park  
Proposal

September 20, 2023





# Dogs in Reading

- Reading households: Over 10,155 \*
- Reading households with dogs: Over 2,823 \*  
(3,000-3,100?)
- Registered and *known* unregistered dogs: Over 3,332 \*

Registered: 2,605 \*

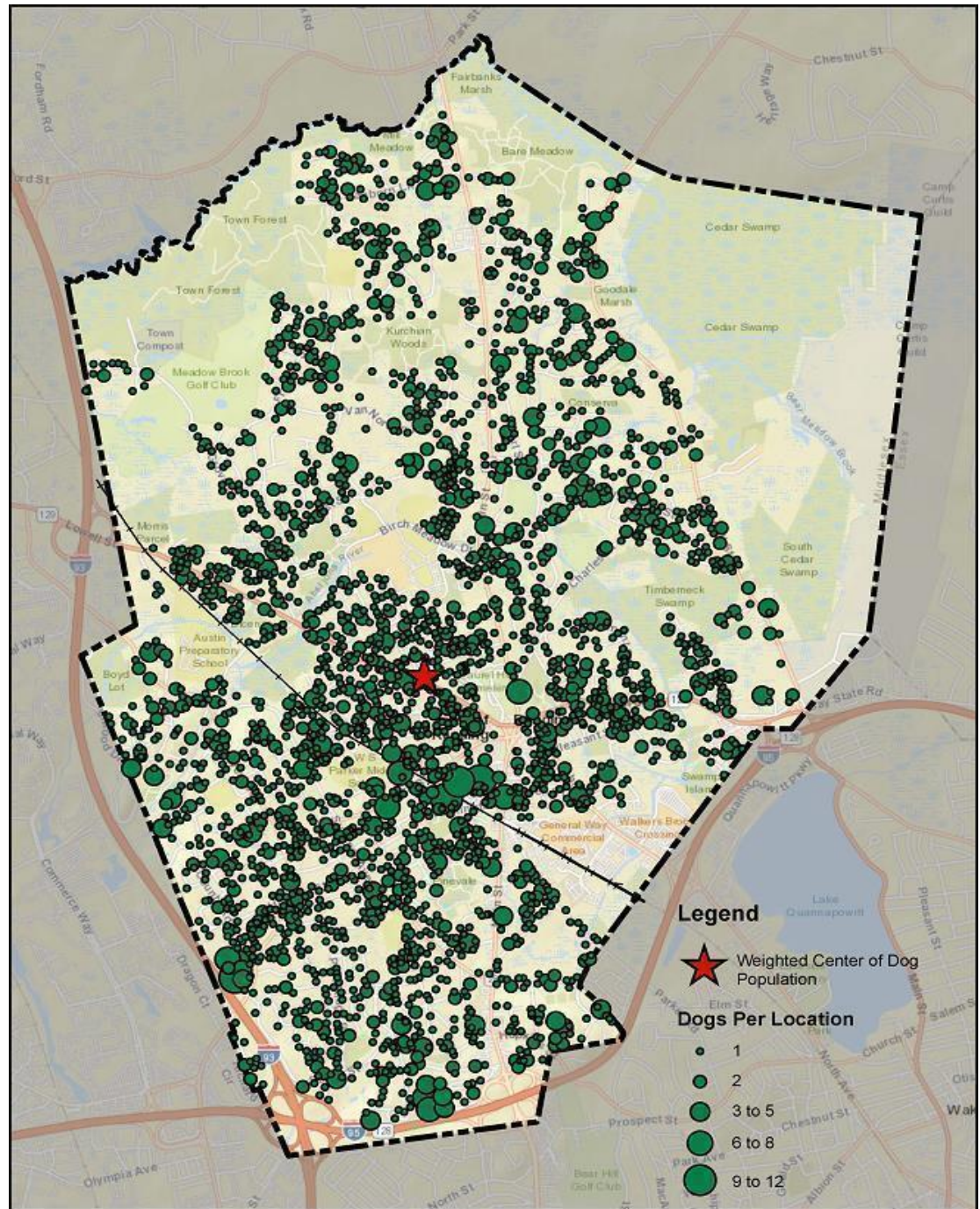
Unregistered: 727 \*

- Additional unregistered dogs (est.): 100-200?

\* Latest figures per Reading Town Clerk, 7/20/2023.



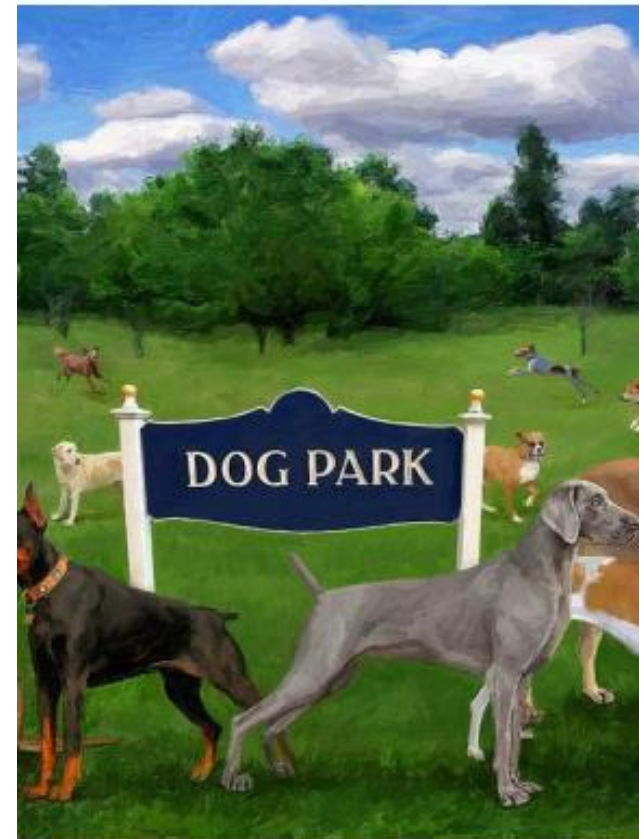
# Dogs in Reading



# Benefits of a Dog Park

---

- **A dog park strengthens a dog's physical and emotional health and socialization.**
  - A place for dogs to play safely, off leash.
  - A safe, healthy activity for individuals and families with their dogs.
  - Reduced risks from ticks, poisonous plants, dirty water, vehicles, etc.
  - Eliminates “leash anxiety” that affects many dogs.
  - Dogs learn to socialize with other dogs and people.
- **An alternative to walking dogs on town sidewalks and in the streets, in the Reading Town Forest, and on local trails.**
- **A social opportunity for families, the very young, and the elderly.**
- **Dog owners gain knowledge about caring for their dogs from other owners.**
- **A community gathering place.**
- **A town amenity that enhances overall property values.**





# Stanton Foundation Grant



- Funds up to \$25,000 for dog park design.
- Funds up to \$250,000 (90%) for construction.
- Stanton has funded at least 47 dog parks to date.
- Funding “sunsets” this December.

## Essential requirements to be eligible:

- Select a location.
- Submit grant application by Dec. 31, 2023.
- Property must be Town-Owned, AND committed at application.

[www.TheStantonFoundation.org](http://www.TheStantonFoundation.org)



# What Makes a Great Dog Park?

Design elements that make a dog park safe and convenient to access, safe to be there, fun for dogs and owners:

- **Double-gated entry** for dogs and people. **Wide gate** for DPW access.
- **Separate areas** for all dogs and small dogs. (Gloucester has 4 sections.)
- **Secure fencing** all around.
- **Internal low-fenced areas** to prevent collisions between dogs and people.
- **Shade** (from the sun). **Simple shelter** (from the weather).
- **Water Stations**. **Optionally, pools** (as at the Billerica Dog Park).
- **Seating** (benches, tree stumps).
- **Waste bag dispensers**. **Waste barrels** for bag and trash disposal.
- **Ground cover** (easy on dogs' feet and bodies, ideally low absorption of waste).
- **Agility equipment** (e.g., 3-foot diameter pipe, ramp, jump, hurdles).
- **Signage** for rules, expectations, guidelines, suggestions, tips.
- **Maintenance** (regular waste bag replenishment, waste barrel pickup, cleaning, safety checks, ground cover and fence maintenance).
- **Lighting** (for safety and convenience, especially late fall through early spring).



# WILMINGTON



## Wilmington Dog Park

**All Dogs  
13,500 ft<sup>2</sup>**

Sand surface - Tree shade - Benches  
Agility items (hoop, large pipe, ramp, etc.)

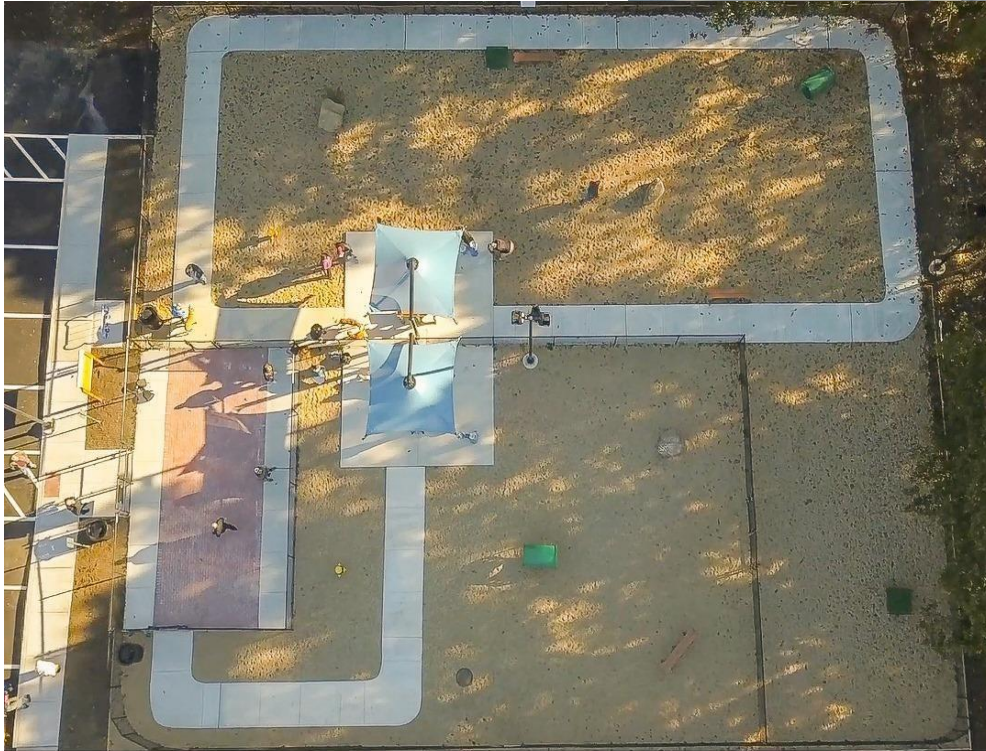
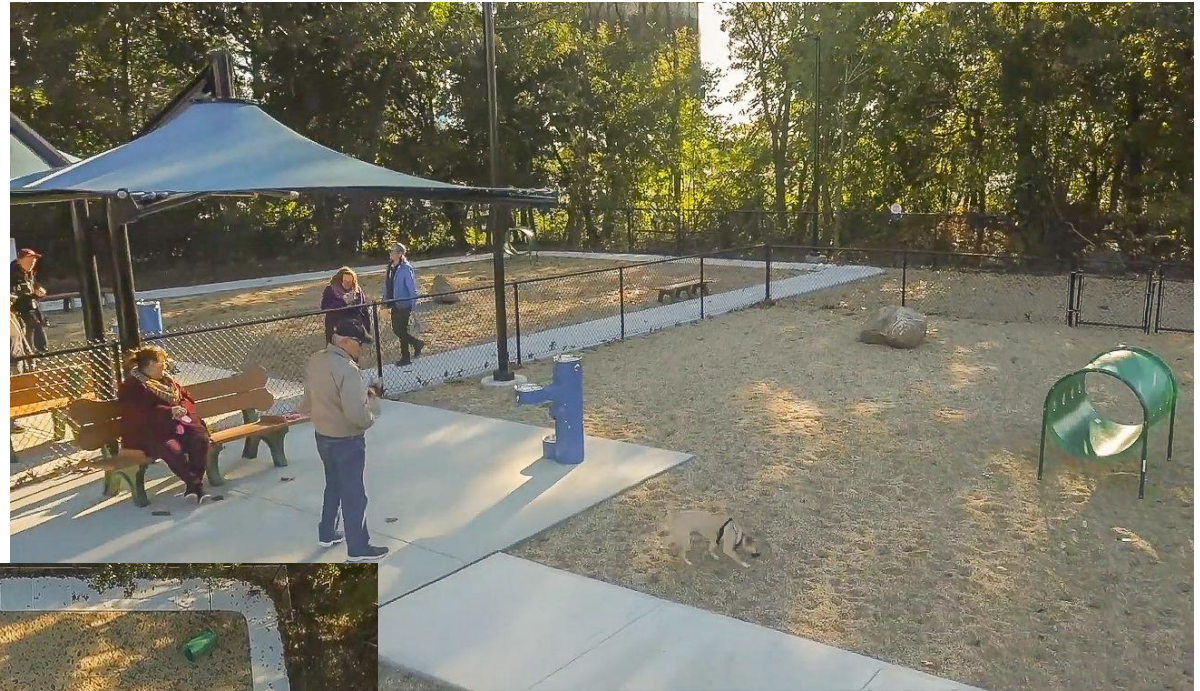
However, NO water or trash containers.

**Small and young dogs  
6,600 ft<sup>2</sup>**





# PEABODY





# BURLINGTON





# BURLINGTON





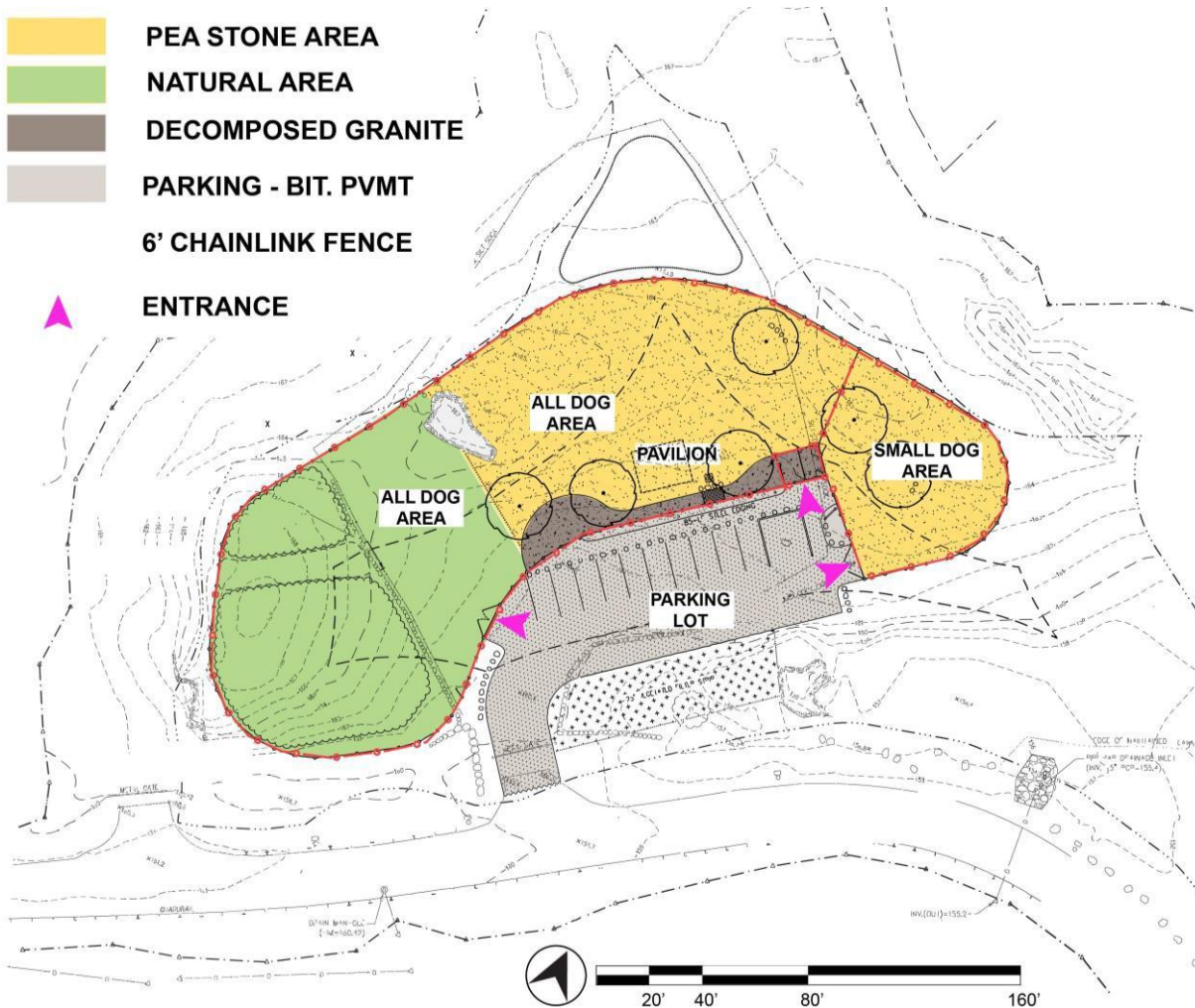
# BILLERICA





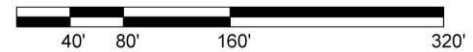
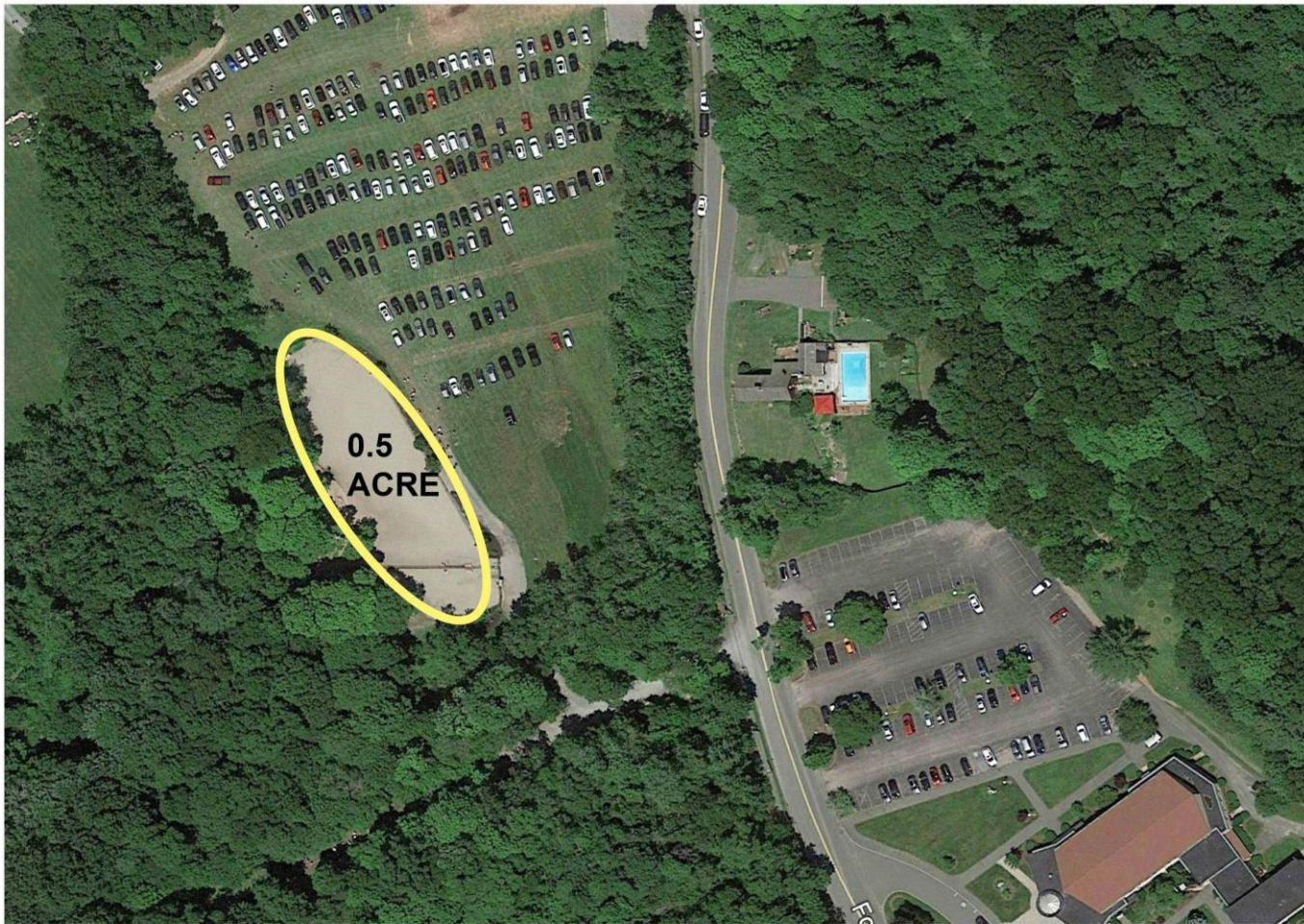
# BILLERICA

-  PEA STONE AREA
-  NATURAL AREA
-  DECOMPOSED GRANITE
-  PARKING - BIT. PVMT
-  ENTRANCE



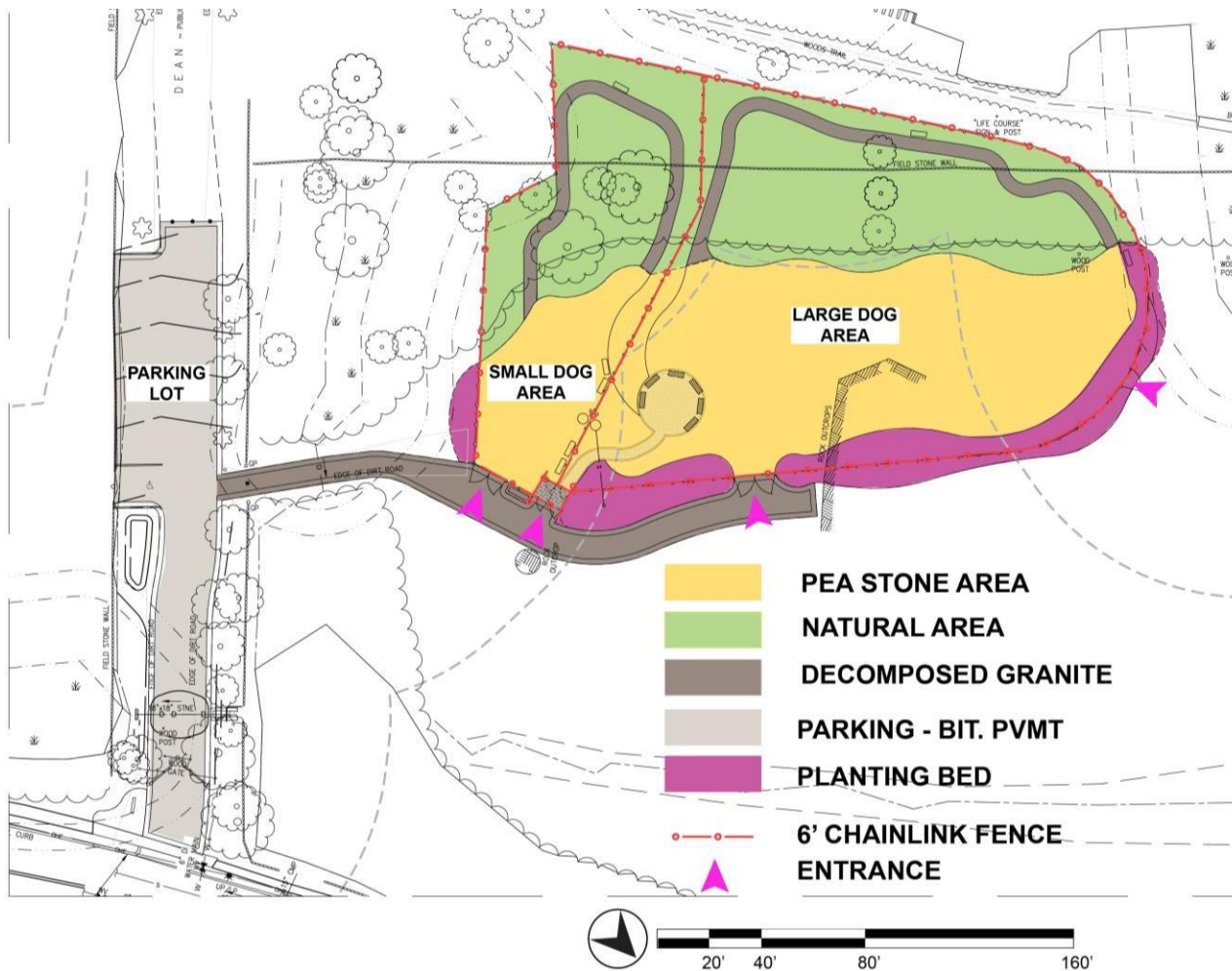


# DANVERS





# DANVERS





# Location Criteria

- **Sufficient size.** – “Too small” is unfair to dogs and unsafe for dogs and people.  
Wilmington Dog Park, as a reference: 20,000 ft<sup>2</sup> total, with  
an all-dog area of 13,500 ft<sup>2</sup> and a small dog area of 6,500 ft<sup>2</sup>.  
Wakefield Dog Park is 10,000 ft<sup>2</sup>, and seems cramped and unsafe.
- **Safe to use** by owners and their dogs.
- **Safe access** for adults and the young, by car or foot.
- **Convenient access** by car or by foot.
- **Proximity** – As close as possible to the weighted population center of Reading. (See map.)
- **Water line** access.
- **Parking** for 10-12 cars within a reasonable distance.
- **Suitability** for the location and surroundings.



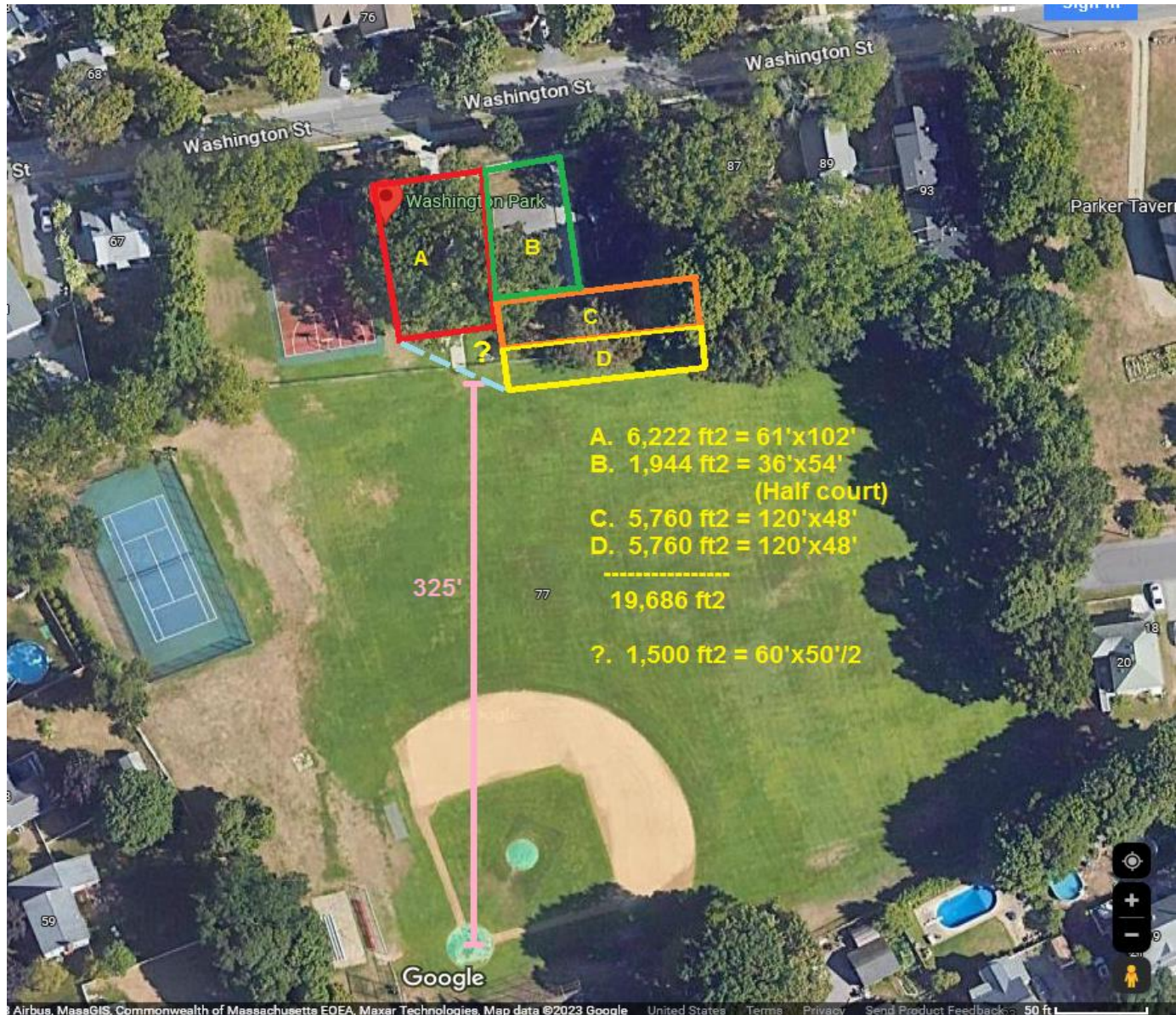
# Locations Considered

## *Include...*

- *Town Forest field*
- *Memorial Park*
- *Water tower area*
- *Oakland Road, across of RMHS*
- *Hunt Park*
- *Beverly Road, Water Department property*
- *Jordan's Furniture parking lot*
- *Bancroft Avenue, between tennis courts and Tot Lot*
- *RMLD properties, in particular the West Street lot*
- *Washington Park*
- *Birch Meadow Road*
- *Symonds Way (western, left-hand area)*



# WASHINGTON PARK



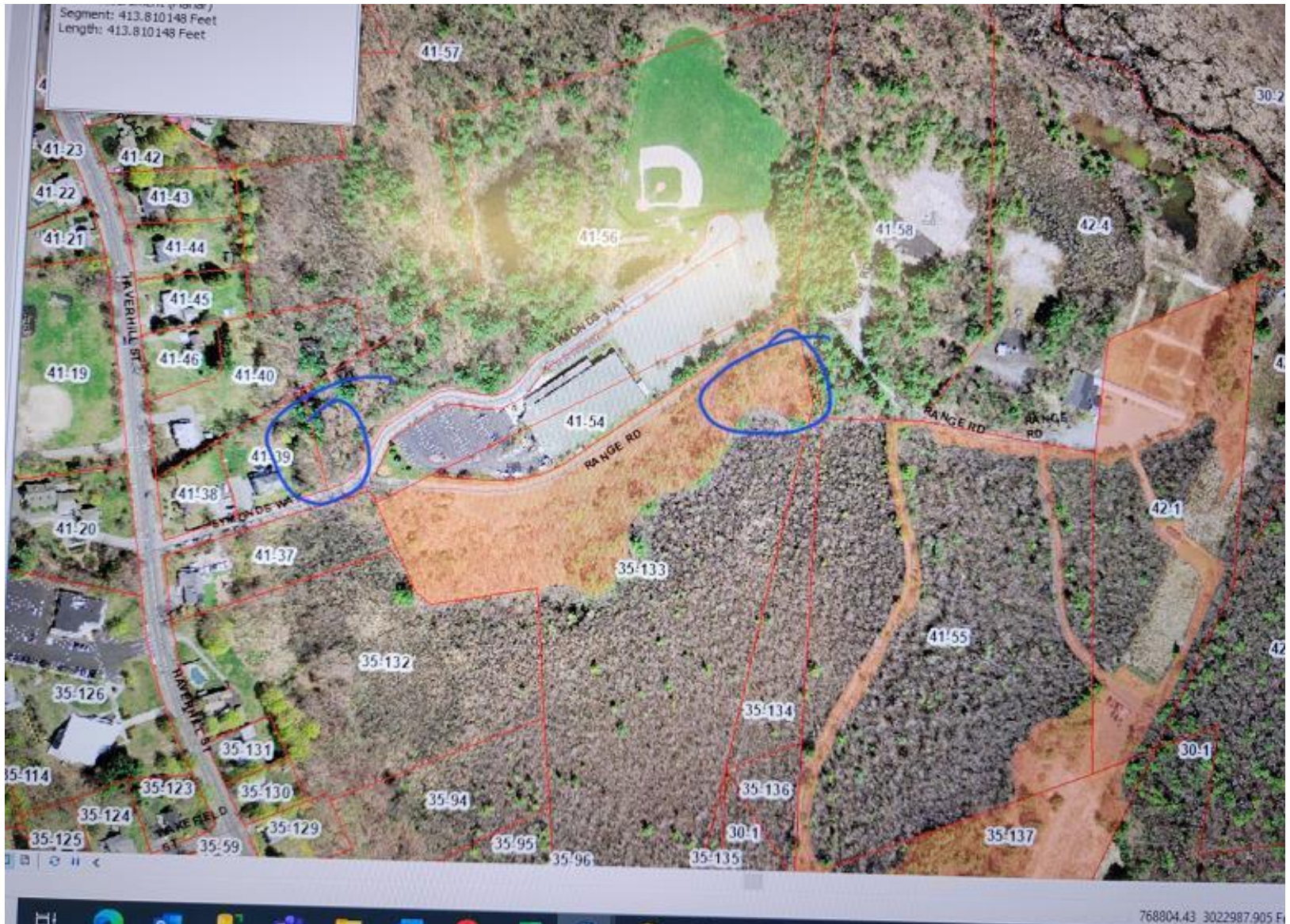


# SYMONDS WAY



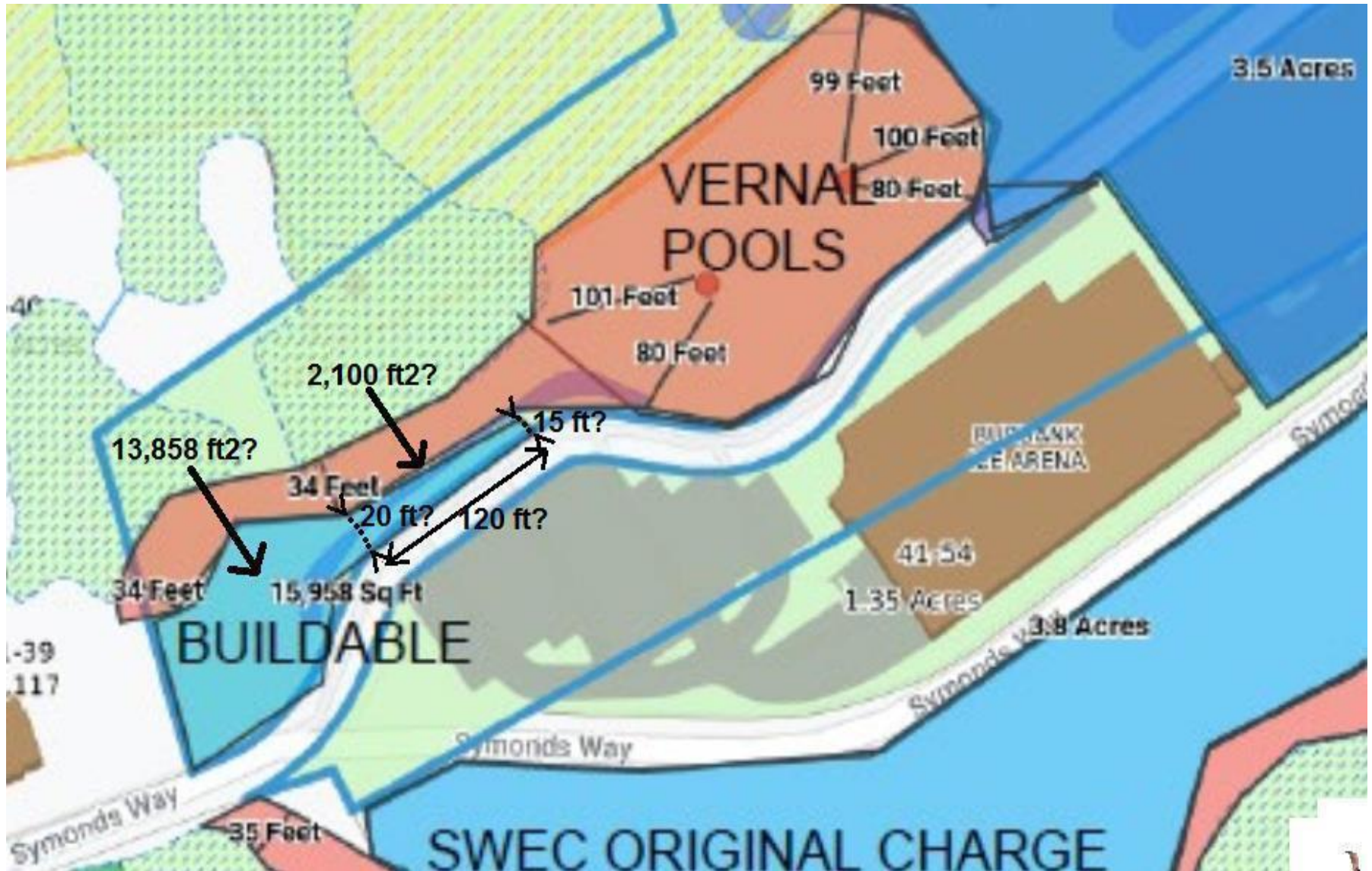


# SYMONDS WAY





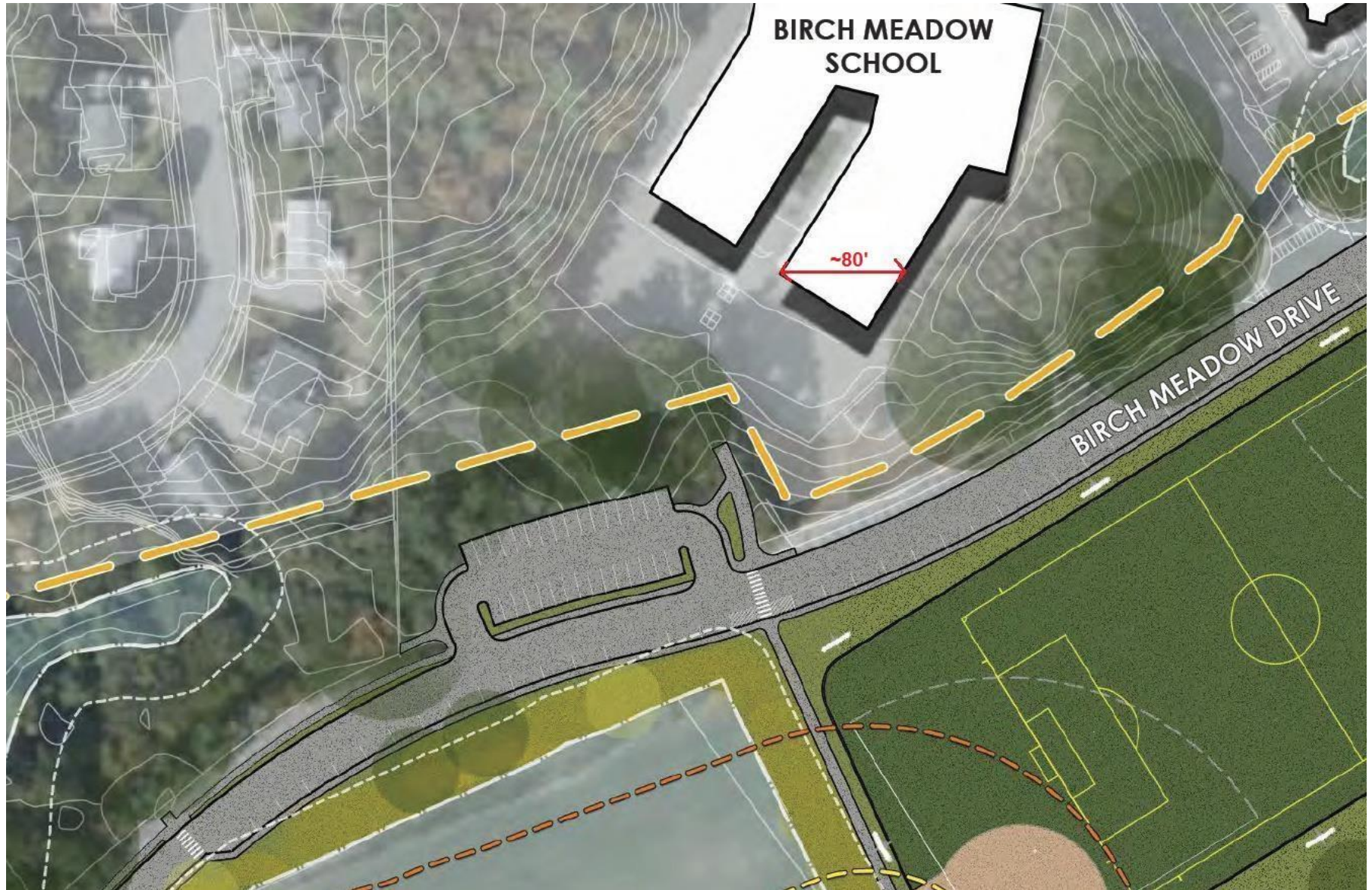
# SYMONDS WAY







# BIRCH MEADOW DRIVE





# BIRCH MEADOW DRIVE

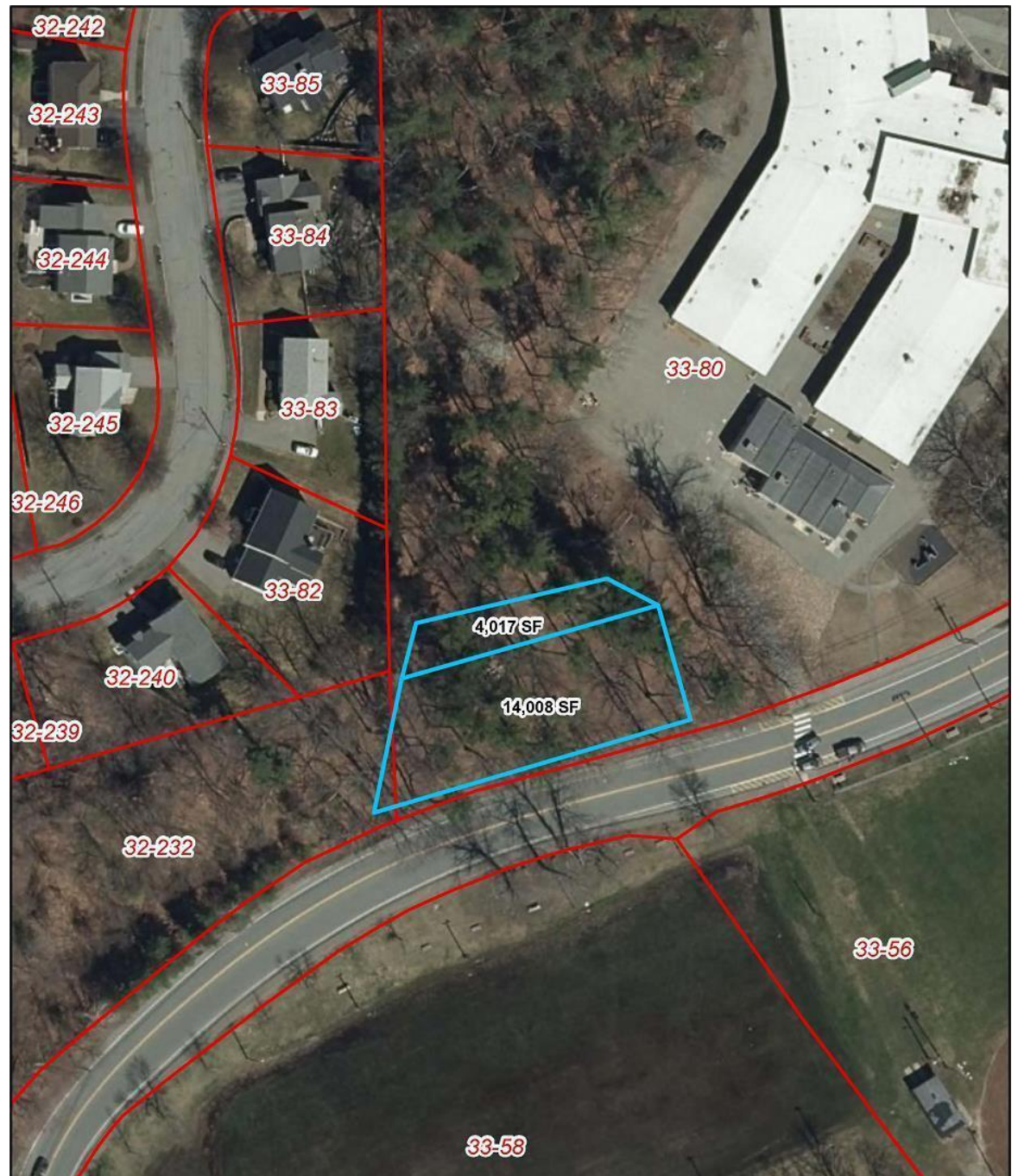




# BIRCH MEADOW DRIVE

4,017 ft<sup>2</sup> area may extend  
farther up (north).

14,008 ft<sup>2</sup> area may extend  
farther up and left.





# Management and Support

- Responsibility and general management:  
Reading Recreation Department?
- Major maintenance:  
Reading Department of Public Works (DPW)?
- Minor maintenance and management (e.g., waste bag supply, safety and rules monitoring), coordination of activities (e.g., events, fall cleanup), signage, fundraising, etc.:  
“Friends of Reading Dog Park”?



# Questions?

