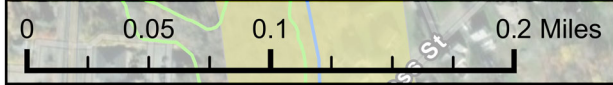




WESTERN ROUTE MAIN LINE



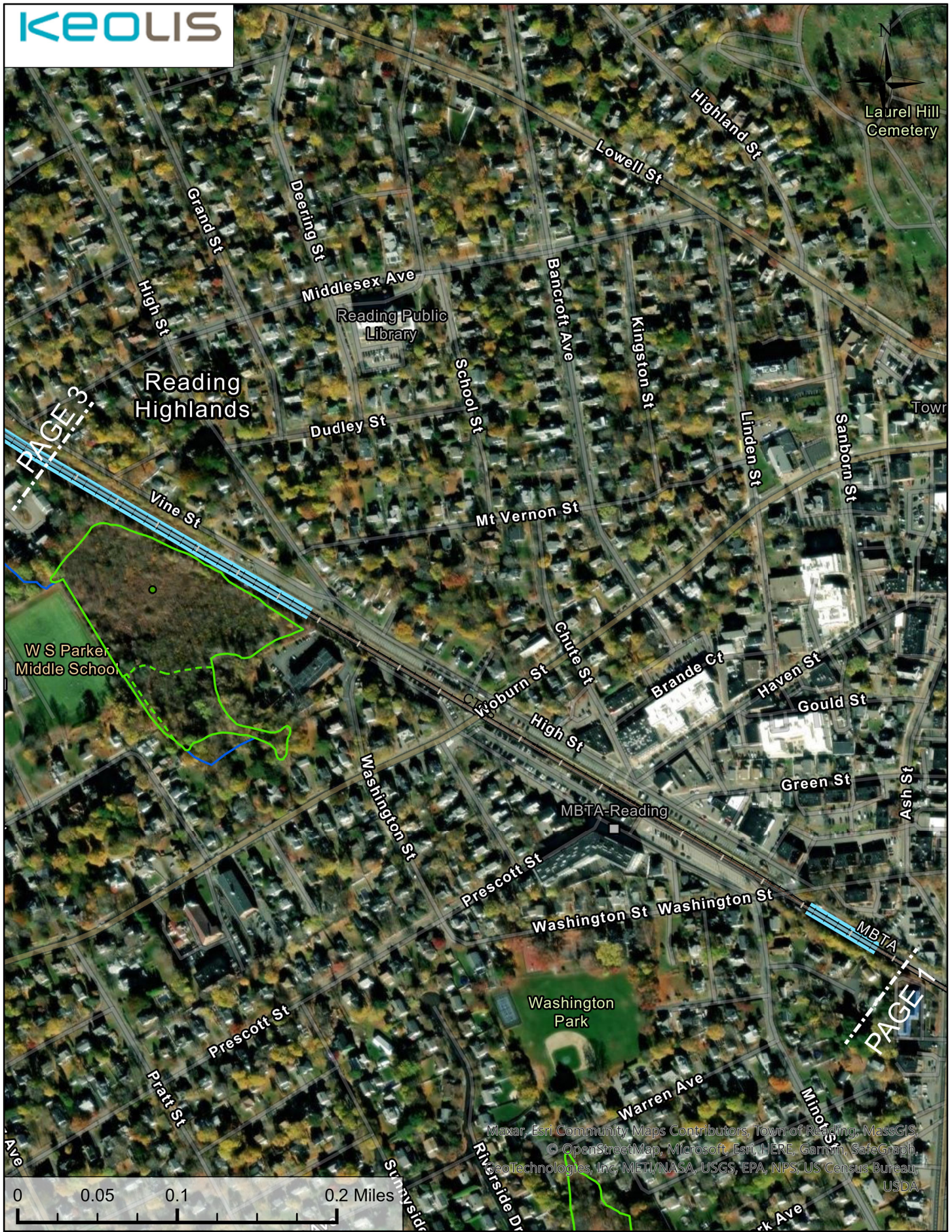
Mavar, Esri Community Maps Contributors, Town of Reading, MassGIS, © OpenStreetMap (Microsoft, Esri, HERE, Garmin, DeLorme, GeoTechnologies, Inc., METI, NASA, USGS, EPA, NPS, US Census Bureau, USDA



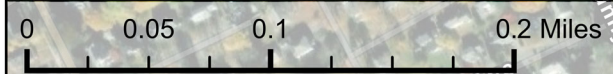
TOWN:	READING	1-YEAR SPRAY INTERVAL	DEP Zone I	ZONE A	Certified Vernal Pool	Mean Low Water Line
DATE:	5/16/2023	2-YEAR SPRAY INTERVAL	DEP Zone II	ZONE B	Shoreline	Apparent Wetland Limit
SCALE:	1:5,000	NO SPRAY	IWPA	NHESP Priority Habitats	Hydrologic Connection	Closure Line
SHEET:	1 OF 4					



WESTERN ROUTE MAIN LINE



Maxar, Esri Community Maps Contributors, Town of Reading, MassGIS, © OpenStreetMap, Microsoft, Esri, HERE, Garmin, SafeGraph, GeoTechnologies, Inc., METI/NASA, USGS, EPA, NPS, US Census Bureau, USDA



TOWN:	READING	1-YEAR SPRAY INTERVAL	DEP Zone I	ZONE A	Certified Vernal Pool	Mean Low Water Line
DATE:	5/16/2023	2-YEAR SPRAY INTERVAL	DEP Zone II	ZONE B	Shoreline	Apparent Wetland Limit
SCALE:	1:5,000	NO SPRAY	IWPA	NHESP Priority Habitats	Hydrologic Connection	Closure Line
SHEET:	2 OF 4					

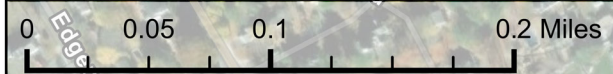


WESTERN ROUTE MAIN LINE



Maxar, Microsoft, Esri Community Maps Contributors, Town of Reading, MassGIS, © OpenStreetMap, Microsoft, Esri, HERE, Garmin, SafeGraph, GeoTechnologies, Inc, METI/NASA, USGS, EPA, NPS, US Census Bureau

W S Parker Middle School



TOWN:	READING	1-YEAR SPRAY INTERVAL	DEP Zone I	ZONE A	Certified Vernal Pool	Mean Low Water Line
DATE:	5/16/2023	2-YEAR SPRAY INTERVAL	DEP Zone II	ZONE B	Shoreline	Apparent Wetland Limit
SCALE:	1:5,000	NO SPRAY	IWPA	NHESP Priority Habitats	Hydrologic Connection	Closure Line
SHEET:	3 OF 4					

