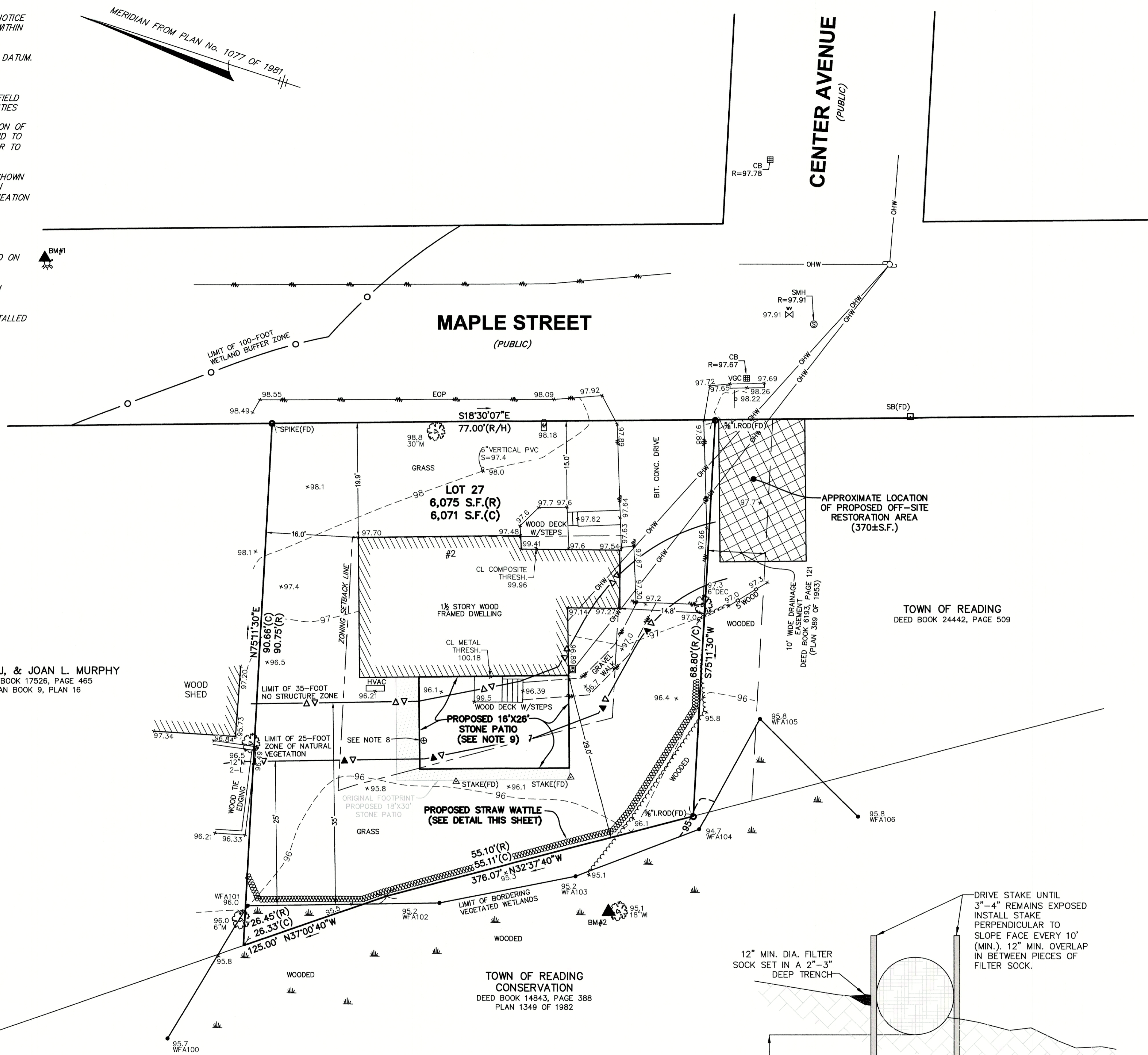


NOTES:

- 1) THIS PLAN HAS BEEN PREPARED TO ACCOMPANY A NOTICE OF INTENT FOR PROPOSED CONSTRUCTION OF A PATIO WITHIN THE BUFFER ZONES TO WETLAND AREAS.
- 2) ELEVATIONS SHOWN HEREON REFER TO AN ASSUMED DATUM.
- 3) OFFSETS SHOWN HEREON ARE TO CORNER BOARD.
- 4) UNDERGROUND UTILITIES SHOWN HEREON ARE FROM FIELD LOCATIONS OF STRUCTURES. OTHER UNDERGROUND UTILITIES MAY EXIST. IT SHALL BE THE RESPONSIBILITY OF THE CONTRACTOR TO VERIFY THE LOCATION, SIZE & ELEVATION OF ALL UTILITIES WITHIN THE AREA OF PROPOSED WORK AND TO CONTACT "DIG-SAFE" AT 811 AT LEAST 72 HOURS PRIOR TO ANY EXCAVATION, DEMOLITION OR CONSTRUCTION.
- 5) LIMITS OF BORDERING VEGETATED WETLANDS (BVW) SHOWN HEREON WERE DELINEATED BY HANCOCK ASSOCIATES ON 11/19/2021 AND LOCATED BY FIELD SURVEY. BVW DELINEATION WAS REVIEWED ON SITE AND REVISED IN MAY 2023.
- 6) LOT 27 SHOWN HEREON IS IN THE 100-FT WETLAND BUFFER ZONE.
- 7) THIS PLAN IS BASED ON A FIELD SURVEY PERFORMED ON 3/29/22.
- 8) DEPTH TO WATER TABLE = 2.2' AT LOCATION SHOWN HEREON, MEASURED MAY 2023.
- 9) PATIO COMPRISED OF PERMEABLE IDEAL PAVERS INSTALLED ACCORDING TO SPECIFICATIONS AND GUIDELINES UNDER "HOMEOWNER INSTALLATION AND PATTERN GUIDE FOR CONCRETE PAVERS" PUBLISHED BY IDEAL PAVERS.



THOMAS J. & JOAN L. MURPHY
DEED BOOK 17526, PAGE 465
PLAN BOOK 9, PLAN 16

TOWN OF READING
CONSERVATION
DEED BOOK 14843, PAGE 388
PLAN 1349 OF 1982

SCALE: 1" = 10'
0 10 20 40

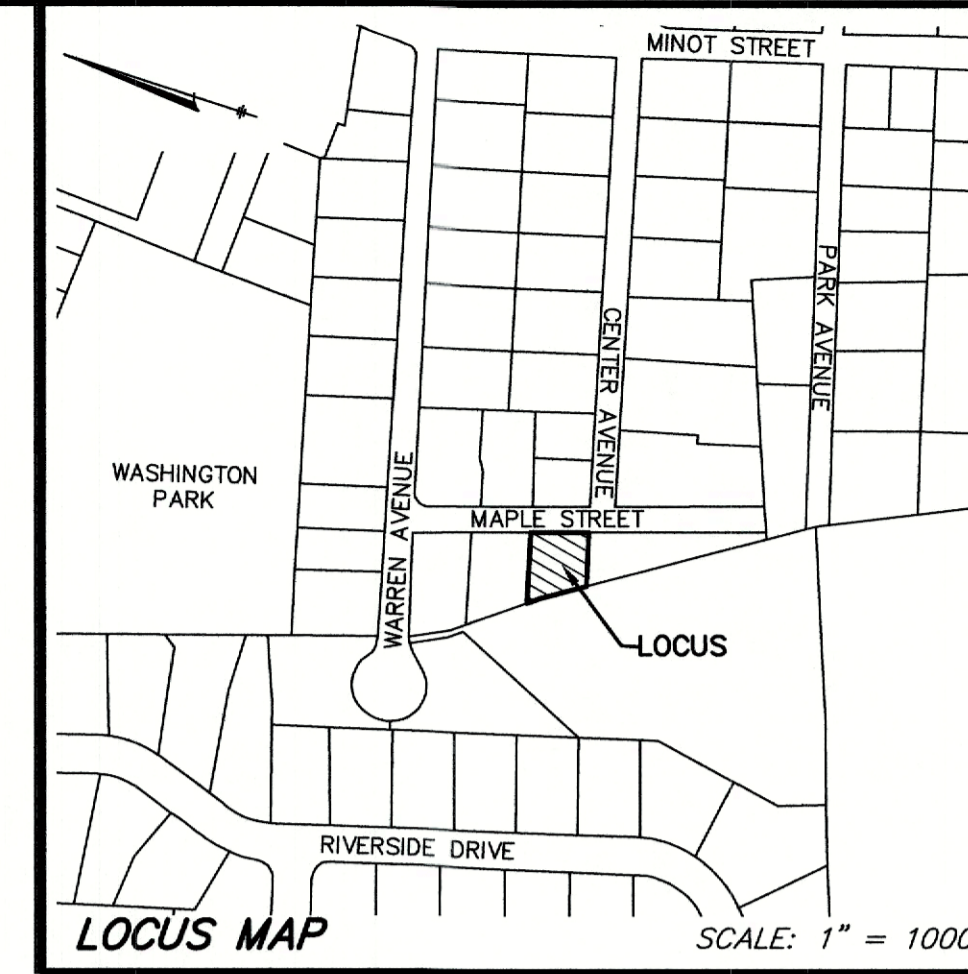
PATIO SURFACE AREA	ORIGINAL FOOTPRINT	REDUCED FOOTPRINT
TOTAL PATIO SURFACE AREA	540 S.F.±	416 S.F.±
35-FOOT NO STRUCTURE ZONE	302 S.F.±	262 S.F.±
25-FOOT ZONE OF NATURAL VEGETATION	175 S.F.±	108 S.F.±

- NOTES:**
1. SOCK SIZE DEPICTED IS FOR GENERAL USE. GREATER SIZES MAY REQUIRE LARGER SOCK.
 2. COMPOST MATERIAL MAY BE DISPERSED ON SITE AT THE DISCRETION OF THE APPROVING AUTHORITY.
 3. PRIOR TO SETTING THE SOCK REMOVE LOOSE LITTER, BRANCHES AND OTHER MATERIAL THAT MAY PREVENT THE SOCK FROM DIRECT CONTACT WITH SOIL.

STRAW WATTLE
NOT TO SCALE

TREE ABBREVIATIONS

- M MAPLE
- W WILLOW
- DEC DECIDUOUS



2 MAPLE STREET

Reading, Massachusetts 01867

PREPARED FOR:

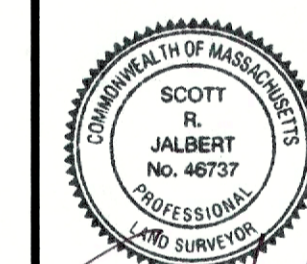
JOHN SIDEROPOULOS

2 Maple Street
Reading, Massachusetts 01867

HANCOCK ASSOCIATES

Civil Engineers
Land Surveyors
Wetland Scientists

185 CENTRE STREET, DANVERS, MA 01923
VOICE (978) 777-3050, FAX (978) 774-7816
WWW.HANCOCKASSOCIATES.COM



6/22/23

NO.	BY	APP	DATE	ISSUE/REVISION DESCRIPTION
1	JAH	SRJ	6/22/23	REVISED PER COMMENTS

DATE: 3/2/23 DRAWN BY: JAH
SCALE: 1"=10' CHECK BY: SRJ

SITE PLAN

PLOT DATE: Jun 22, 2023 5:10 pm
PATH: F:\CNS 30 Projects\25491 - Sideropoulos - Reading\Sur\DWG

DWG: 25491sp.dwg

LAYOUT: SITE PLAN

SHEET: 1 OF 1

PROJECT NO.: **25491**