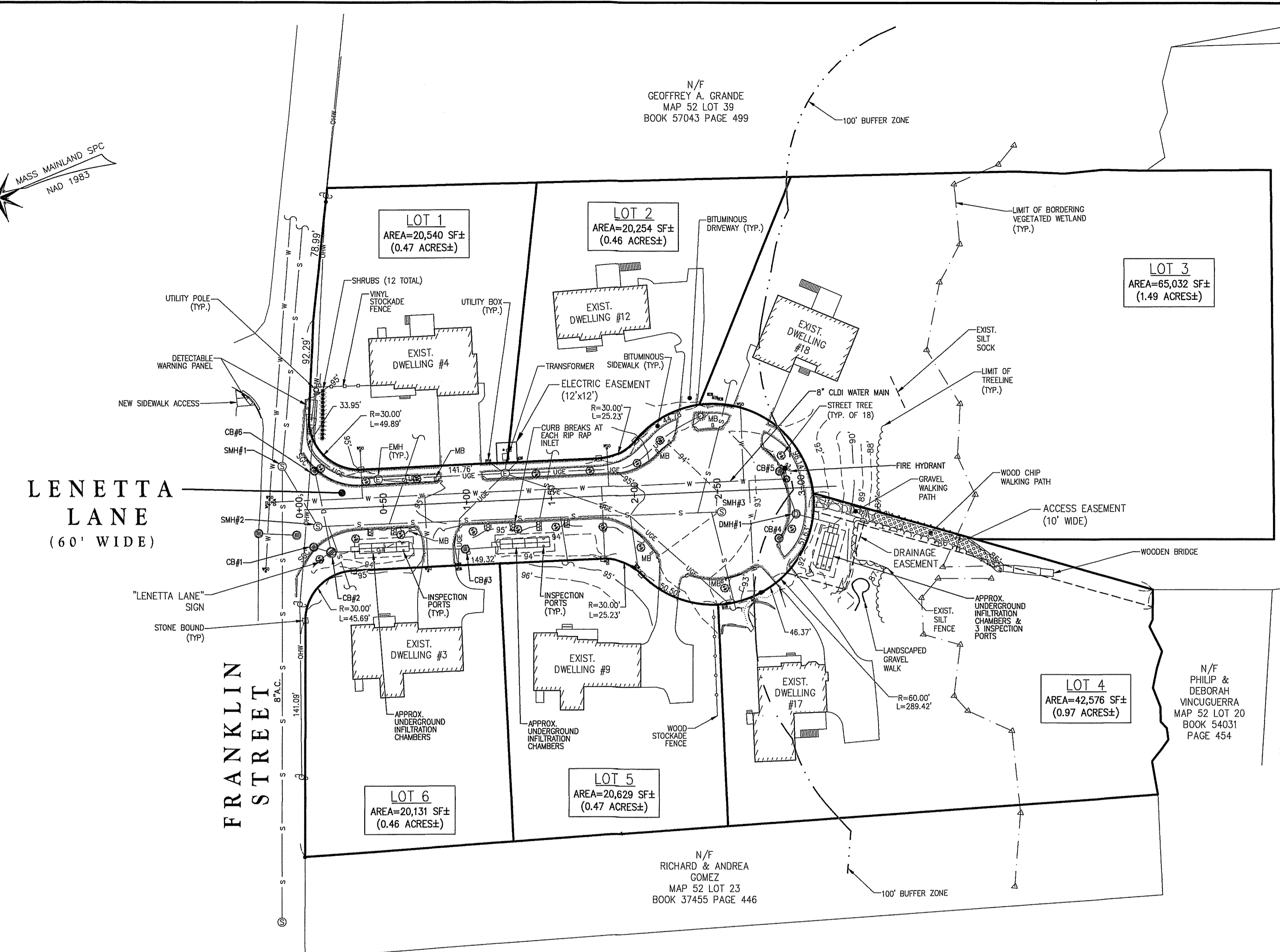


LOCUS MAP
SCALE: NOT TO SCALE



STRUCTURE SCHEDULE:

- CB#1
RIM=94.36
INV. OUT (12" HDPE)=91.28
- CB#2 (DBL GRATE)
RIM=94.00
INV. IN (12" HDPE)=90.85 (91.83)
INV. IN (12" HDPE)=90.85 (91.83)
INV. OUT (12" HDPE)=90.80 (90.76)
- CB#3
RIM=94.01 (94.00)
INV. OUT (12" HDPE)=90.71 (90.77)
- CB#4
RIM=92.10 (92.07)
INV. OUT (12" HDPE)=89.26 (89.07)
- CB#5
RIM=92.35 (92.35)
INV. OUT (12" HDPE)=89.41 (89.35)
- CB#6
RIM=94.26 (94.21)
INV. OUT (12" HDPE)=91.83 (91.54)
- DMH#1
RIM=92.70 (93.10)
INV. IN (12" HDPE)=89.11 (88.90)
INV. IN (12" HDPE)=89.13 (88.90)
INV. OUT (12" HDPE)=89.07 (88.90)
- SMH#1
RIM=94.77 (94.77)
INV. IN (8" PVC)=87.52 (87.52)
INV. OUT (8" PVC)=87.44 (87.44)
- SMH#2
RIM=94.29 (94.34)
INV. IN (8" PVC)=88.74 (88.68)
INV. OUT (8" PVC)=88.64 (88.66)
- SMH#3
RIM=93.96 (94.00)
INV. OUT (8" PVC)=89.85 (89.87)
- () = DESIGN DATA

GENERAL NOTES:

1. THE EXISTING CONDITION DEPICTED HEREON IS THE RESULT OF AN ON-THE-GROUND INSTRUMENT SURVEY PERFORMED BY THE MORIN-CAMERON GROUP, INC.
2. LOCATIONS OF ALL UNDERGROUND UTILITIES SHOULD BE CONSIDERED APPROXIMATE AND SHOULD BE CONFIRMED WITH THE UTILITY PROVIDED PRIOR TO THE COMMENCEMENT OF ANY SITE WORK. THE CONTRACTOR MUST CONTACT THE APPROPRIATE UTILITY COMPANY, ANY GOVERNING PERMITTING AUTHORITY, AND "DIGSAFE" AT LEAST 72 HOURS PRIOR TO ANY EXCAVATION WORK TO REQUEST EXACT FIELD LOCATION OF UTILITIES.

DATUM:

ELEVATIONS HEREON REFER TO THE NORTH AMERICAN VERTICAL DATUM OF 1988 (NAVD 88).

REFERENCES:

1. PLAN BY CHRISTIANSEN AND SERGI, INC. DATED JUNE 30, 2017, REVISED JULY 18, 2017 AND OCTOBER 11, 2017 TITLED "DEFINITIVE SUBDIVISION PLAN FOR BARTON ESTATES LOCATED IN READING, MA" AND RECORDED AT THE MIDDLESEX SOUTH REGISTRY OF DEEDS.
2. STREET ACCEPTANCE PLAN OF LENETTA LANE, LOCATED IN READING, MA BY THE MORIN-CAMERON GROUP, INC. DATED MAY 25, 2023.

RECORD OWNER:

S & L HOMES LLC
10-1 MIDDLESEX AVENUE
WILMINGTON, MASSACHUSETTS 01887
BOOK 89324, PAGE 555
BOOK 70322, PAGE 149

LEGEND

DESCRIPTION	SYMBOL	ABBREVIATIONS
ASBESTOS CONCRETE	---	AC
BORDERING VEGETATED WETLAND	---	
CATCH BASIN	⊙	CB
CONTOUR MAJOR	160	
CONTOUR MINOR	161	
DRAIN MANHOLE	⊕	DMH
DRAIN PIPE	---	
EASEMENT	---	
ELECTRIC MANHOLE	⊕	EMH
HIGH-DENSITY POLYETHYLENE	---	HDPE
HYDRANT	⊗	
LIGHTPOLE	⊙	
MAIL BOX	⊕	MB
OVERHEAD UTILITY WIRE	---	OHW
POLYVINYL CHLORIDE	---	PVC
REINFORCED CONCRETE PIPE	---	RCP
ROAD STATIONING	1+50	
SEWER MANHOLE	⊕	
SEWER LINE	---	S
SLOPE GRANITE CURB	---	SGC
STONE BOUND	⊕	
TYPICAL	---	TYP
UNDERGROUND ELECTRIC	---	UGE
UTILITY POLE	⊕	UP
WATER GATE	⊕	
WATER LINE	---	W
WATER SHUT OFF	⊕	
100' WETLAND BUFFER	---	

I CERTIFY THAT THESE PLANS CONFORM WITH THE CRITERIA AND CONDITIONS AS SUBMITTED AND APPROVED WITH THE EXCEPTION OF THE FOLLOWING MINOR DEVIATIONS THAT HAVE BEEN APPROVED BY THE TOWN OF READING ENGINEERING DIVISION:

- THE GRATE ON THE EXISTING CATCH BASIN IN FRANKLIN STREET WAS TO BE REPLACED WITH A MANHOLE COVER. THIS WAS NOT DONE.
- THE 4-INCH OVERFLOW FOR THE INFILTRATION CHAMBERS OFF THE END OF THE CUL-DE-SAC WAS NOT INSTALLED.

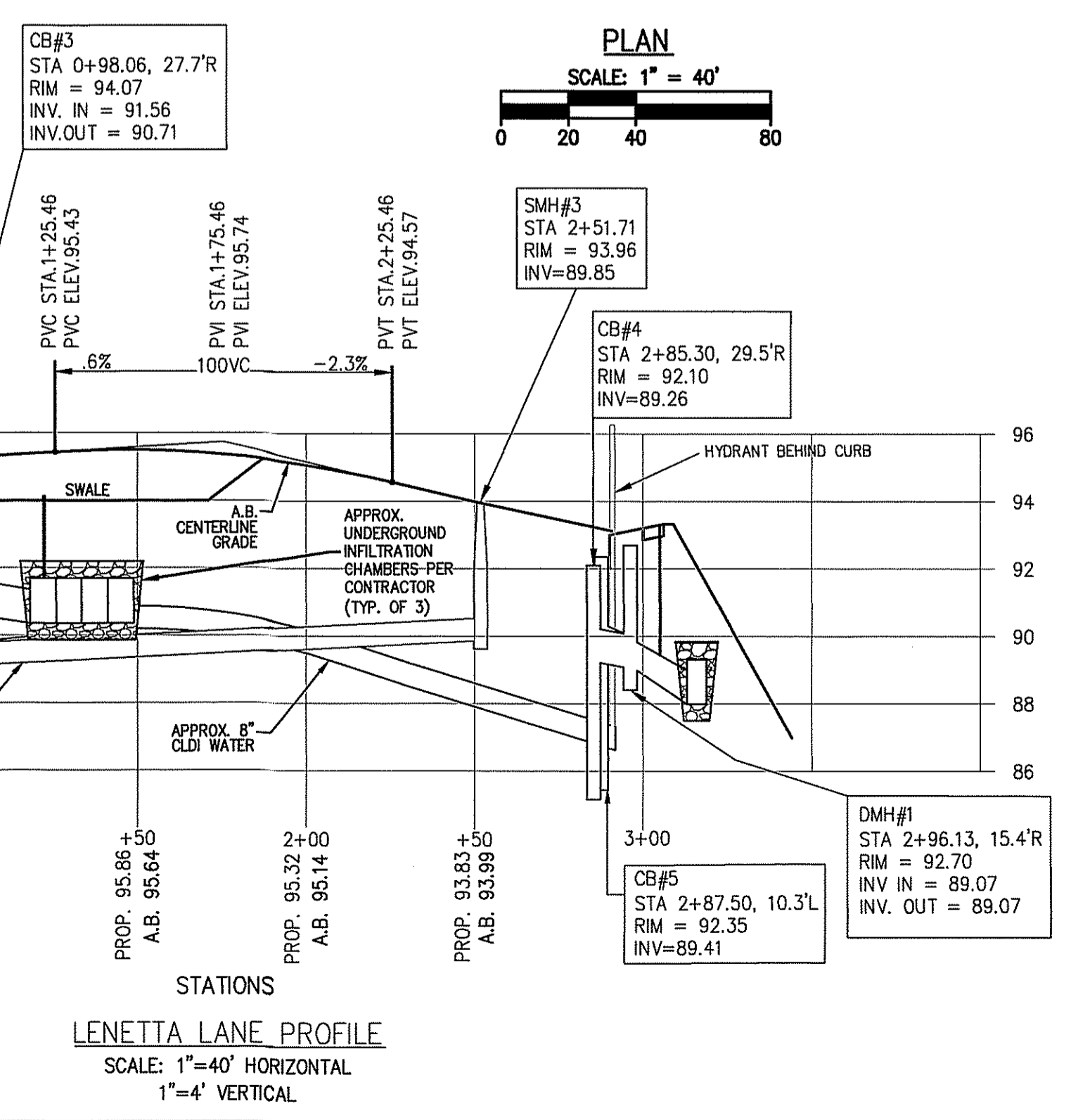
I FURTHER CERTIFY THAT THESE PLANS REPRESENT AN AS-BUILT CONDITION.



MASSACHUSETTS REGISTERED PROFESSIONAL CIVIL ENGINEER

5/25/2023
DATE

NOTE: ALL DRAINAGE PIPES ARE 12" HDPE



AS-BUILT PLAN
OF
LENETTA LANE

LOCATED IN
READING, MA.
PREPARED FOR
LENETTA LANE CBC LLC
DATE: 5/25/2023 SCALE: 1"=40'

SCALE: 1"=40'

The Morin-Cameron GROUP, INC.

CIVIL ENGINEERS | ENVIRONMENTAL CONSULTANTS
LAND SURVEYORS | LAND USE PLANNERS
25 KENOZA AVENUE, HAVERHILL, MASSACHUSETTS 01830
P: 978-373-0310, WWW.MORINCAMERON.COM